



Performa™ 2

60" x 29" Vikrell® bath/shower with Aging In Place
backerboards, right drain
71340126



Features

- Tongue-and-groove modular design allows for easy installation during any phase of construction
- Molded-in shelves
- Easy-to-clean, durable high-gloss finish
- Factory-installed Aging in Place backerboards for future grab bar installation

Material

- Compression molded from our exclusive solid Vikrell® material

Installation

- Alcove
- Right drain
- Caulk-free installation

Recommended Products/Accessories

K-23726 Drain treatment
K-23733 Vikrell® cleaner

Included Components

71341120 60" x 29" Vikrell® alcove bath, right drain
71344106 60" x 29" bath/shower wall set with Aging In Place
backerboards



Codes/Standards

CSA B45.5/IAPMO Z124
ASTM E162
ASTM E662
IAPMO Certification


STERLING® Vikrell® or Acrylic Baths and Shower Bases Ten-Year Limited Warranty

See website for detailed warranty information.

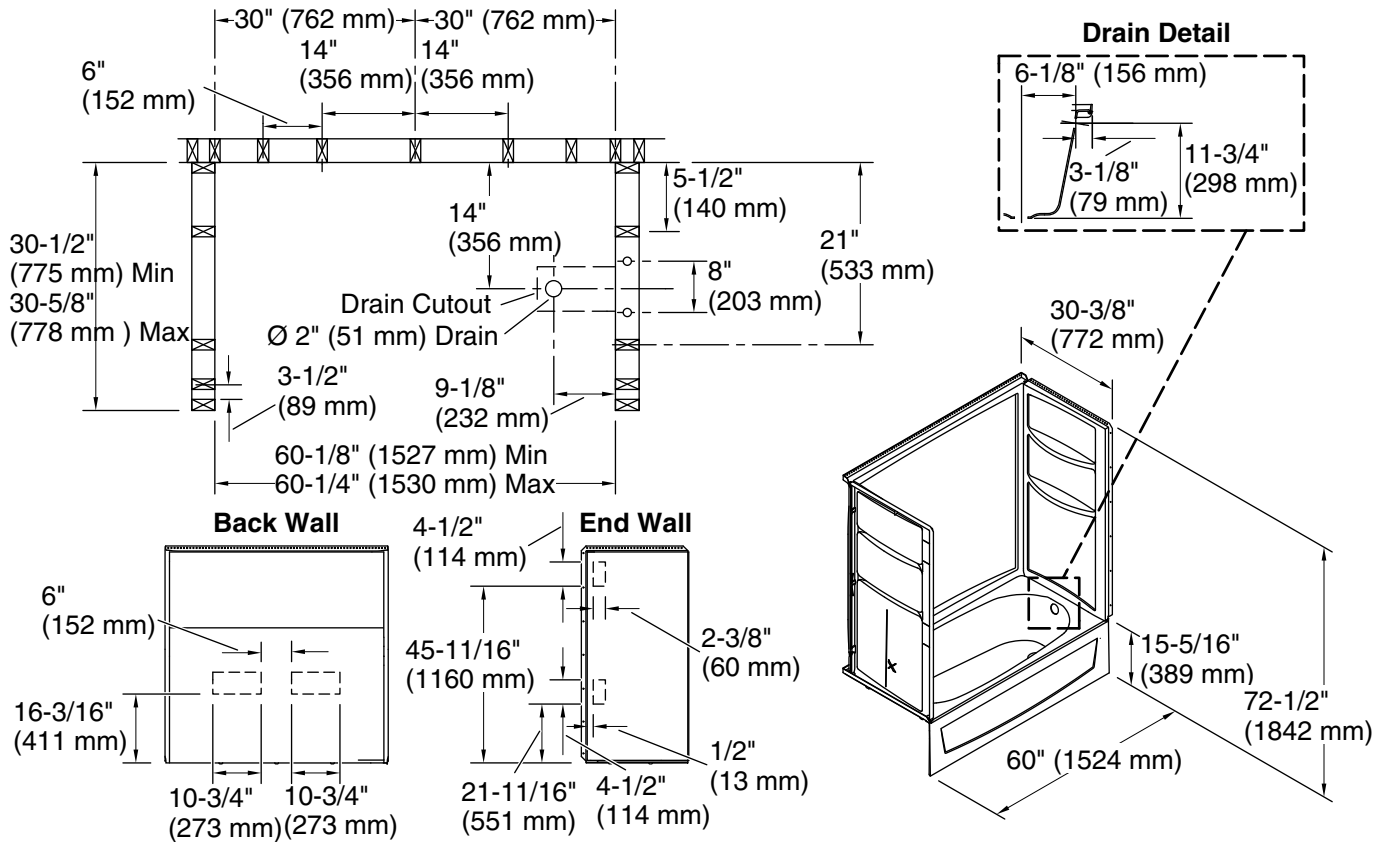
Available Colors/Finishes

Color tiles intended for reference only.

Color	Code	Description
-------	------	-------------

	0	White
---	---	-------

Performa™ 2
60" x 29" Vikrell® bath/shower with Aging In Place
backerboards, right drain
71340126



Technical Information

All product dimensions are nominal.

Drain location:	Right
Weight:	108.5 lbs (49.2 kg)
Water depth:	9-3/4" (248 mm)
Water capacity:	35 gal (132.5 L)
Minimum flat for door:	1-3/4" (44 mm)
Maximum door height:	55-3/4" (1416 mm)
Maximum door width:	57-3/4" (1467 mm)

Notes

Install this product according to the installation instructions.

Studs should be positioned roughly as shown.