



# GERBER

VITREOUS CHINA  
TOILET  
**20-021**

LAVATORIES

TOILETS

BIDETS / URINALS

CAST IRON



## Maxwell® 1.28 Wall Hung, Elongated Back Outlet Toilet

### Features:

- 1.28 gpf/4.8 Lpf high efficiency two-piece toilet
- Wall hung back outlet
- Elongated bowl
- Dual-fed siphon jet
- Pilot fill valve
- 3" flush valve
- Color matched tank lever
- Available in white
- ADA compliant
- Does not include bolts or caps

### Dimensions:

Height ..... 30 1/2"  
Width ..... 17 1/4"  
Depth ..... 27"  
Rough-in ..... 4"  
Water Surface from Rim .... 5 1/4"  
Trapway (min) ..... 1 3/4"  
Water Surface ..... 9 7/8" x 7 1/4"  
Water Seal ..... 2 5/8"  
Shipping Weight ..... 80 lbs

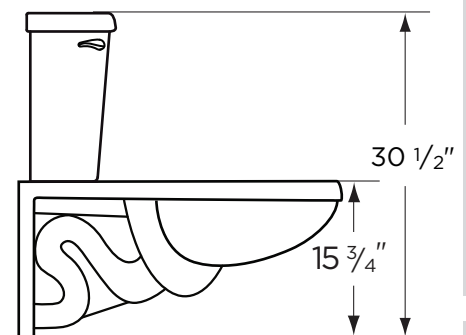
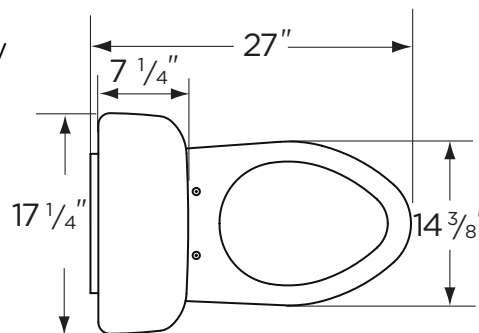


**Specifications:** Bowl — #21-970 Elongated  
Seat not included

Tank — #28-970

### Warranty:

- Limited Lifetime Warranty



THIS FIXTURE QUALIFIES  
ACCORDING TO ASME TEST  
PROCEDURES AS A HIGH  
EFFICIENCY WATER CLOSET  
WITH AN AVERAGE CONSUMPTION  
OF 1.28 gpf (4.8 Lpf) OR LESS.

HIGH-EFFICIENCY TOILETS

# HET



[www.gerberonline.com](http://www.gerberonline.com)

Job Name	
Date	
Model Specified	
Quantity	
Customer	
Contractor	
Architect/engineer	

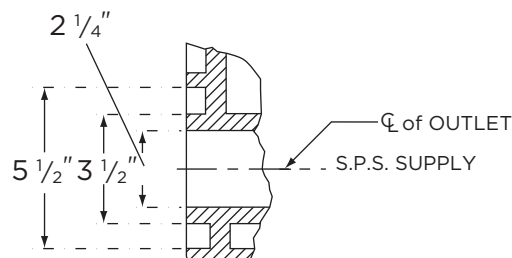
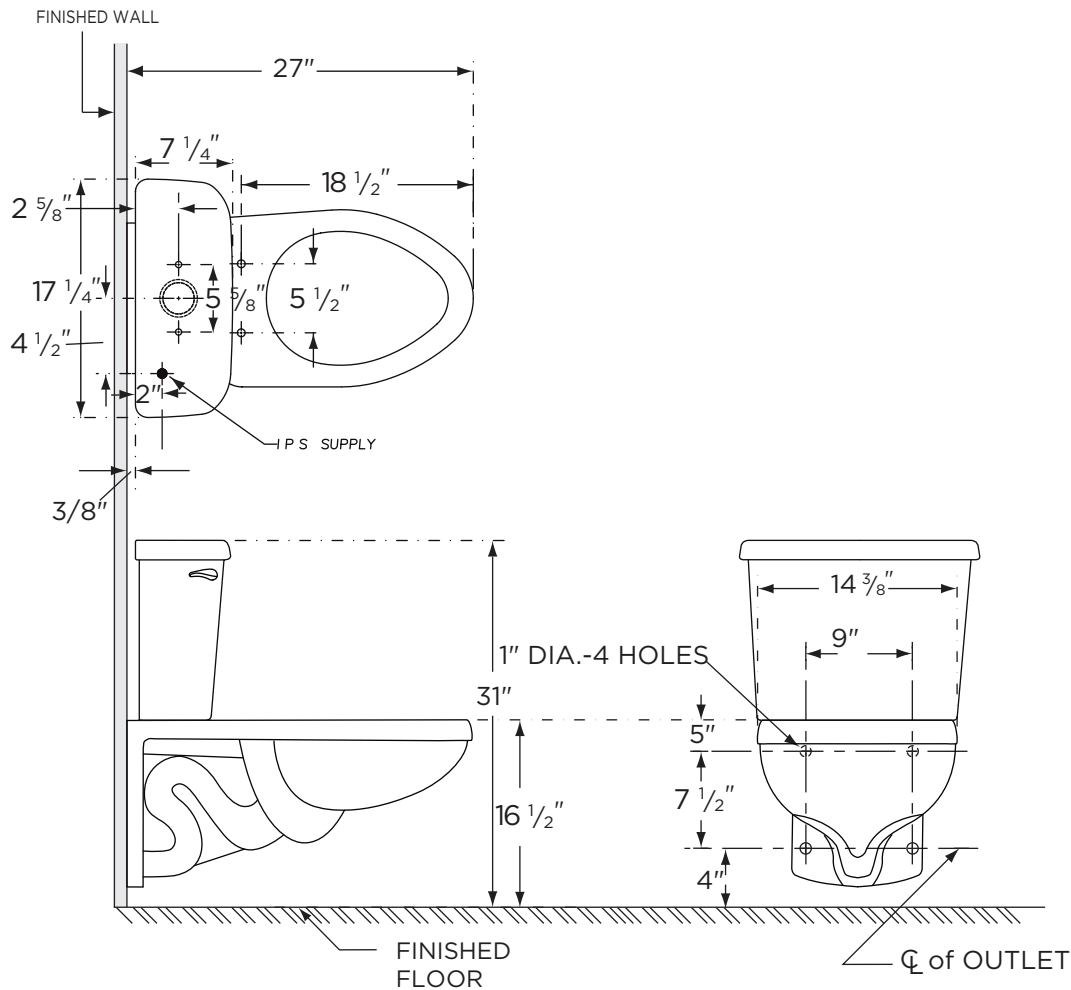


# GERBER

1.28 gpf (4.8 Lpf) MAXWELL® TOILET

20-021

Wall Hung, Elongated Back Outlet  
(Bowl 21-970 with Tank 28-970)



#### NOTES:

All dimensions are in inches.

Illustrations may not be drawn to scale.

#### IMPORTANT:

Dimensions of fixtures are nominal and may vary within the range of tolerances established by ASME Standard A 112.19.2.

THIS FIXTURE QUALIFIES ACCORDING TO ASME TEST PROCEDURES AS A HIGH EFFICIENCY WATER CLOSET WITH AN AVERAGE CONSUMPTION OF 1.28 gpf (4.8 Lpf) OR LESS.