

# GERBER®

VITREOUS CHINA  
TOILET  
**WS-20-900**

LAVATORIES

TOILETS

BIDETS / URINALS

CAST IRON

## MAXWELL® 1.28 Round Front Toilet

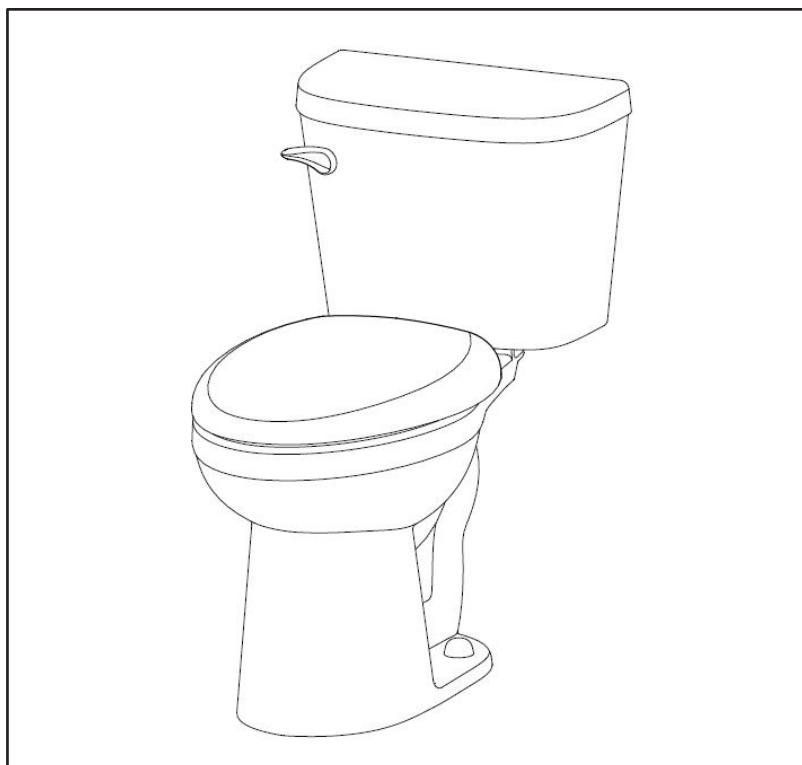
10" Rough-in

### Features:

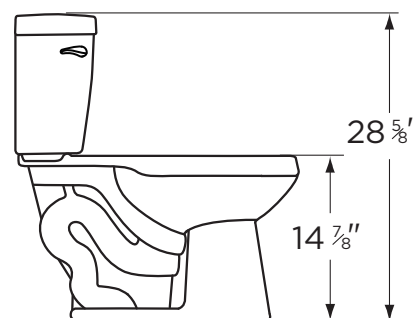
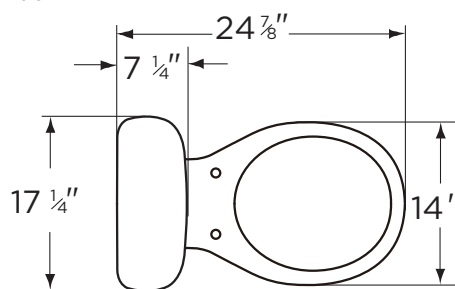
- 1.28 gpf/4.8 Lpf high efficiency two-piece toilet
- Round Front bowl
- Dual-fed siphon jet
- Pilot fill valve
- 3" flush valve
- 2" glazed trapway
- Color matched front tank lever (white only)
- Available in White
- 2 bolt caps
- Seat not included

### Dimensions:

Height ..... 28 5/8"  
Width ..... 17 1/4"  
Depth ..... 24 7/8"  
Rough-in ..... 10"  
Water Surface from Rim ..... 6"  
Trapway ..... 2"  
Water Surface ..... 9 1/8" x 7"  
Water Seal ..... 2 1/4"  
Shipping Weight ..... 69.5 lbs



**Specifications:** Bowl—#MX-21-952 Round Front Bowl Tank—#28-995



THIS FIXTURE QUALIFIES  
ACCORDING TO ASME TEST  
PROCEDURES AS A HIGH-  
EFFICIENCY WATER CLOSET  
WITH AN AVERAGE CONSUMPTION  
OF 1.28 gpf (4.8 Lpf) OR LESS.

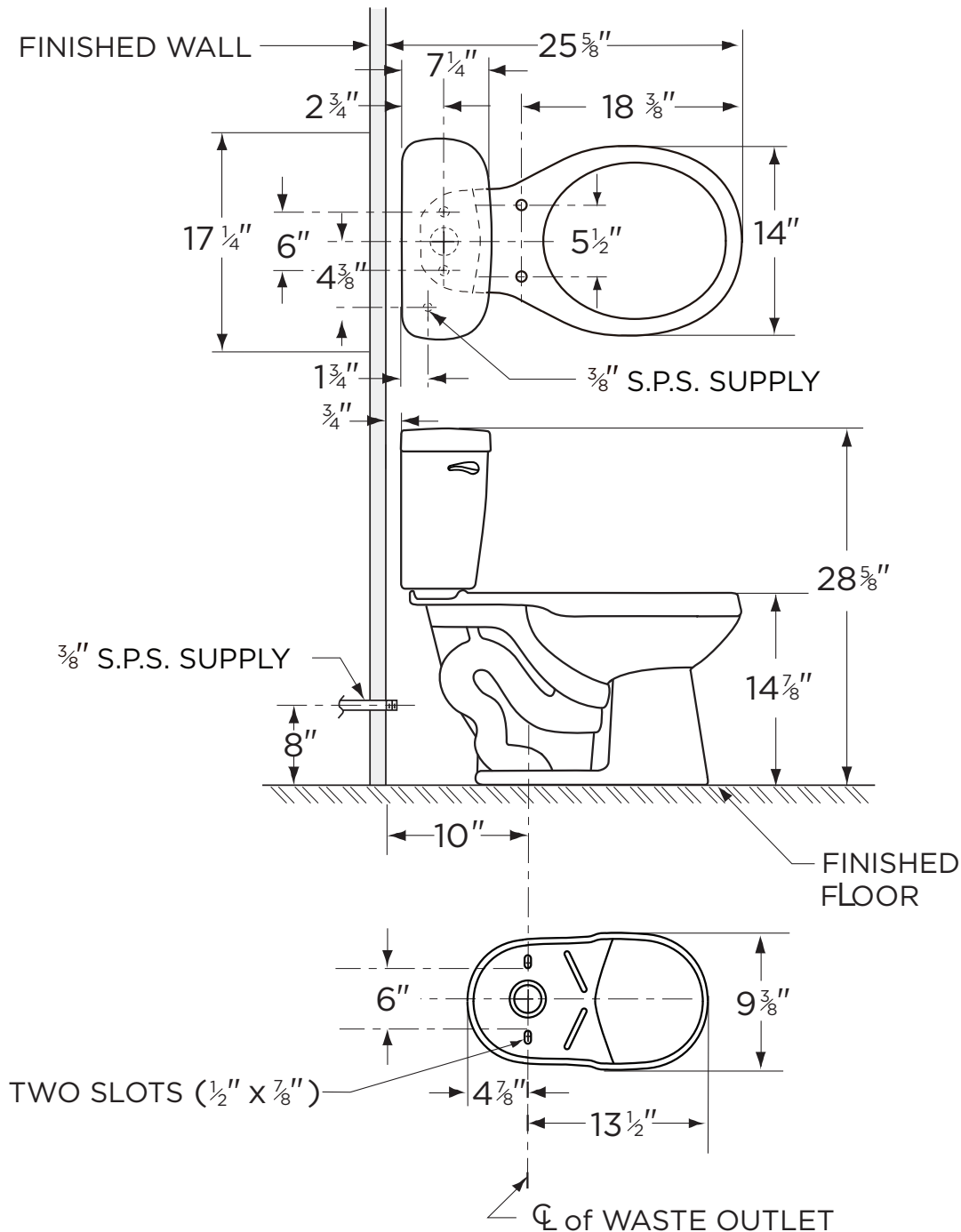
HIGH EFFICIENCY TOILET  
**HET**



[www.gerberonline.com](http://www.gerberonline.com)

Job Name	
Date	
Model Specified	
Quantity	
Customer	
Contractor	
Architect/engineer	

1.28 gpf (4.8 Lpf) MAXWELL® 1.28 TOILET  
WS-20-900  
Round Front, 10" Rough-in  
(Bowl MX-21-952 with Tank 28-995)



NOTES:

All dimensions are in inches.

Illustrations may not be drawn to scale.

**IMPORTANT:**

Dimensions of fixtures are nominal and may vary within the range of tolerances established by ASME Standard A 112.19.2.

THIS FIXTURE QUALIFIES ACCORDING TO ASME  
TEST PROCEDURES AS A HIGH-EFFICIENCY  
WATER CLOSET WITH AN AVERAGE  
CONSUMPTION OF 1.28 gpf (4.8 Lpf) OR LESS.