

# SS610E

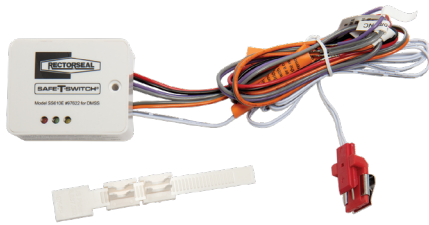
## Drain Pan Level Sensor/Control



Job Name:

System Reference:

Date:



### GENERAL FEATURES

- Provides protection against drain pan overflow.
- Powered by the indoor unit and no batteries required.
- LED indicator that provides fault history.
- Can be wired in both Normally Open and Normally Closed systems.
- Installation directly on primary drain pan or clipped to coils above primary drain pan.

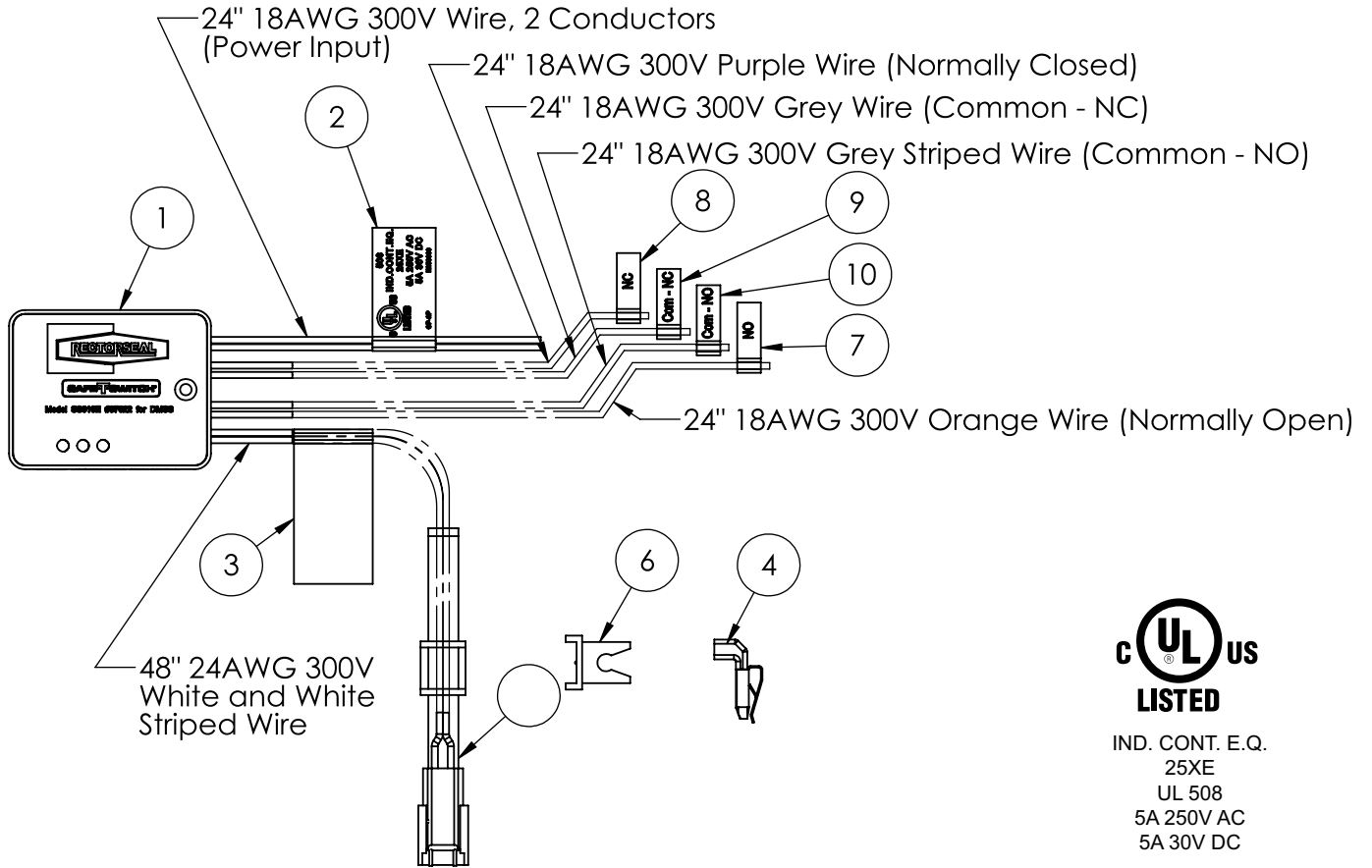
### SPECIFICATIONS

- Power Input: 110-230VAC
- Power Consumption: 0.5W
- AC switching capacity: 0-250VAC, 5A, 1250VA max
- DC switching capacity: 0-30VDC, 5A, 150W
- Switch method: Normally Open (NO) and Normally Closed (NC)
- Switch length: 2.5in
- Switch height: 2in
- Probe cable length: 4ft
- Lead cable length: 2ft

### COMPATIBILITY

M&P Ductless	CM Ductless
MSZ-EF09NA(B/W/S)	PKFY-P12NLMU-E
MSZ-EF12NA(B/W/S)	PKFY-P15NLMU-E
MSZ-EF15NA(B/W/S)	PKFY-P15VBM-E
MSZ-EF18NA(B/W/S)	PKFY-P15VBM-ER5
MSZ-FS06NA	PKFY-P18NLMU-E
MSZ-FS09NA	PKFY-P20VBM-E
MSZ-FS12NA	PKFY-P20VBM-ER3
MSZ-FS15NA	PKFY-P20VBM-ER4
MSZ-FS18NA	PKFY-P20VBM-ER5
MSY-GL09NA	PKFY-P24NKMU-E2
MSY-GL12NA	PKFY-P25VBM-E
MSY-GL15NA	PKFY-P25VBM-ER3
MSY-GL18NA	PKFY-P25VBM-ER4
MSY-GL24NA	PKFY-P25VBM-ER5
MSZ-GL06NA	PKFY-P04NLMU-E
MSZ-GL09NA	PKFY-P06NLMU-E
MSZ-GL12NA	PKFY-P08NLMU-E
MSZ-GL15NA	PKFY-P30NKMU-E2
MSZ-GL18NA	PKFY-P32VHM-E
MSZ-GL24NA	PKFY-P32VHM-ER2
MSY-GS30NA	PKFY-P40VHM-E
MSY-GS36NA	PKFY-P40VHM-ER2
MSZ-GS30NA	PKFY-P50VHM-E
MSZ-GS36NA	PKFY-P50VHM-ER1
MSZ-HM09NA	PKFY-P50VHM-ER2
MSZ-HM12NA	PKFY-P63VKM
MSZ-HM15NA	PKFY-P63VKM-E
MSZ-HM18NA	PKFY-P63VKM-E.TH
MSZ-HM24NA	PKFY-P63VKM-ER1.TH
MSZ-JP09WA	PKFY-P100VKM-E
MSZ-JP12WA	PKFY-P100VKM-E.TH
MSZ-WR09NA	PKFY-P100VKM-ER1.T
MSZ-WR12NA	
MSZ-WR18NA	
MSZ-WR24NA	
PKA-A12LA	
PKA-A18LA	
PKA-A24KA7	
PKA-A30KA7	
PKA-A36KA7	

# SS610E



IND. CONT. E.Q.  
25XE  
UL 508  
5A 250V AC  
5A 30V DC

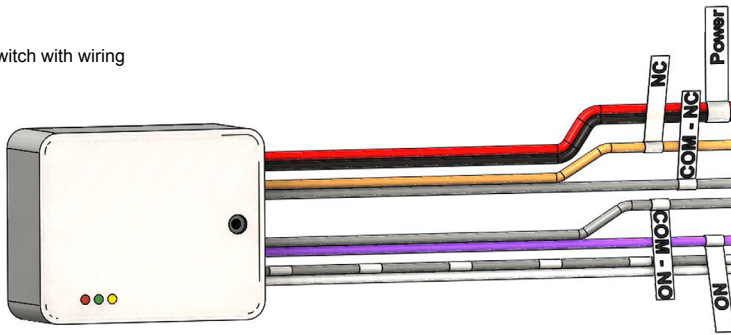
1. CP-2P
2. UL tag
3. Reset instruction tag
4. Bracket assembly
5. Ratchet assembly
6. Coil clip for 5mm
7. Tag, Normally open
8. Tag, Normally closed
9. Common Tag, Normally closed
10. Common tag, Normally open

<p>RECTORSEAL, LLC 2601 Spenwick Dr Houston, TX 77055 800-231-3345 www.rectorseal.com</p>			
<p>Part Name Electronic Condensate Overflow Switch SS610E</p>			
Tolerance	Scale		Date
XX ±1 XXX ±.01 X.XXX±.005 X.XXXX ± .0005	1:2		
	Drawing #		Revision
	ASB00483		A

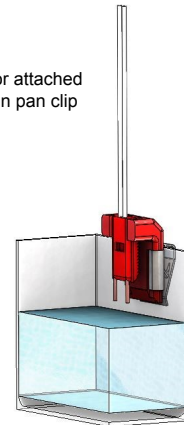
# COMPONENTS AND INSTALLATION METHODS: SS610E

## COMPONENTS

Switch with wiring



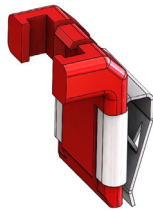
Sensor attached in drain pan clip



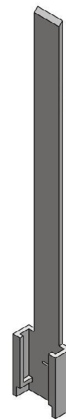
Sensor



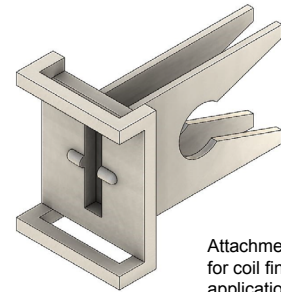
Sensor clip for drain pan application



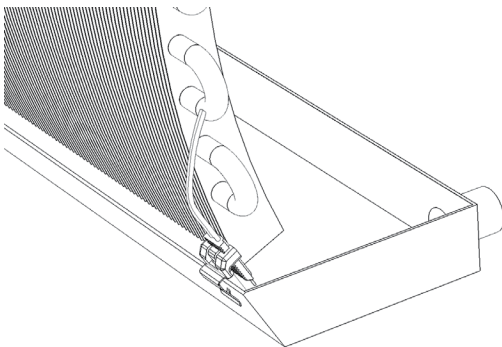
Sensor clip for coil fin application



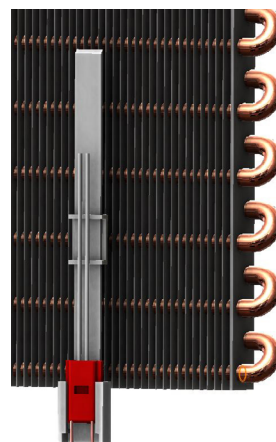
Attachment for coil fin application



Installation methods



Installation on drain pan



Installation on coil fins

1340 Satellite Boulevard Suwanee, GA 30024  
Toll Free: 800-433-4822 [www.mehvac.com](http://www.mehvac.com)

FORM# M\_Submittal\_SS610E\_DrainPanLevelSensor - 202210