

# CL Steam

EFFICIENT  
Oil-Fired  
Cast Iron Boiler



## Six Sizes

(GPH) .75, 1.00, 1.20, 1.50, 1.75, 1.90  
(MBH\*) 91, 121, 147, 181, 212, 230

\*DOE heating capacity

- Up to 86.4% AFUE
- 68 to 173 net MBH
- Chimney vented
- Cast iron heat exchanger, wet base design
- Tankless coil available
- Metal section connectors - resistant to chemicals, offer increased boiler longevity
- Swing-away cast iron door provides easy access to combustion chamber
- 10-year limited warranty on heat exchanger



# CL Steam Technical Information



Model	DOE Heating Capacity (MBH)	AHRI Net Steam (MBH)	AHRI Net Steam (sq. ft.)	Burner Capacity (GPH)	AFUE (%)	Minimum Chimney Req.	Tankless Heater (GPM)	Jacket Depth 'A'	Jacket Rear to Center of Flue 'B'	Flue Collar Dia. 'C'	Approx Ship Wt. (lbs.)
CL3-105SE <sup>1</sup>	91	68	283	0.75	85.7	8" x 8" x15'	3.00	17-3/8"	8-1/4"	6"	570
CL3-140SE	121	91	379	1.00	85.0	8" x 8" x15'	3.25	17-3/8"	8-1/4"	6"	570
CL4-168SE <sup>1</sup>	147	110	458	1.20	86.4	8" x 8" x15'	3.75	22-3/8"	10-7/8"	7"	690
CL4-210SE	181	136	567	1.50	85.1	8" x 8" x15'	4.00	22-3/8"	10-7/8"	7"	690
CL5-245SE <sup>1</sup>	212	159	663	1.75	85.6	8" x 8" x15'	4.25	27-3/8"	13-3/8"	8"	810
CL5-266SE	230	173	721	1.90	85.3	8" x 8" x15'	4.75	27-3/8"	13-3/8"	8"	810

1. Original boiler size

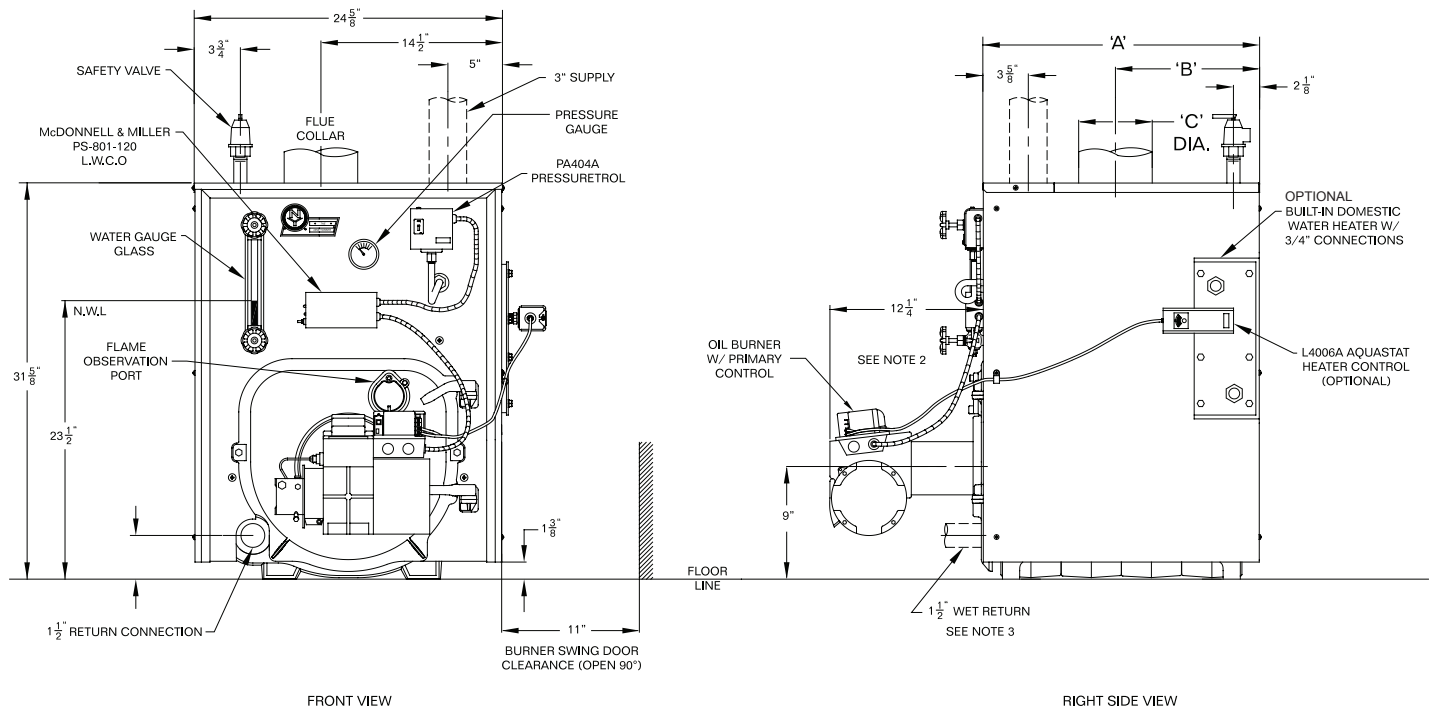
■ Adapted configuration w/different nozzle (included)

NOTE: Add "T" to end of model number for tankless heater coil

Net AHRI ratings are based on a piping and pickup allowance of 1.15. The manufacturer should be consulted before selecting a boiler for installations having unusual piping and pickup requirements, such as intermittent system operation, extensive piping systems, etc.

## Standard Features

- Fully packaged
- Beckett AFG oil burner
- Beckett GeniSYS primary control
- Electronic ignitor 14KV
- 1-1/2" return connection
- 3" supply connection
- Metal section connectors
- Gauge glass set
- Vertical flue design
- Probe type LWCO
- Pressuretrol
- 15 lb. relief valve



## Notes:

- Tankless coil opening not present on less-coil boilers
- Piping shown hidden not furnished with boiler
- Drain valve shipped loose (not shown)



[www.newyorkerboiler.com](http://www.newyorkerboiler.com)  
[info@newyorkerboiler.com](mailto:info@newyorkerboiler.com)  
 ©2023 New Yorker Boiler Company, Inc., Lancaster, PA  
 PL81420101007 - 8/23 5Mmr

