

SPECIALIZED AND GENERAL USE GAUGES

**Test Equipment
Depot**
1-800-517-8431

99 Washington Street
Melrose, MA 02176
Phone 781-665-1400
Toll Free 1-800-517-8431

Visit us at www.TestEquipmentDepot.com





YELLOW JACKET®

3-1/8" Dry Manifold Gauges

Class 1 (1% accuracy) calibration with high visibility colored temperature scales

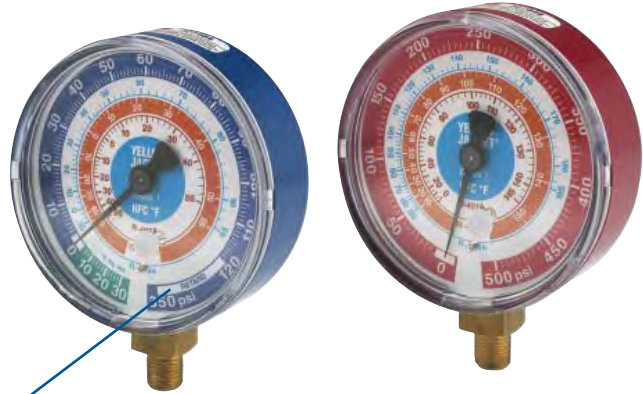


3-1/8" (80 mm) DRY MANIFOLD GAUGES (°F and °C) RED, BLUE AND BLACK With 1% accuracy (Class 1) calibration

Large 3-1/8" gauges are housed in a red or blue steel case with front recalibrator screw. High visibility colored temperature scales are easy to read through the full view polycarbonate crystal.

- Flutterless™ technology with brass surge protector to minimize needle pulsation
- Brass gauge movement
- Copper alloy Bourdon tube
- 1/8" NPT Male connection
- Calibrated to 1% accuracy
- Color-coded red for pressure and blue for compound
- Color-coded refrigerant types

When a gauge has a **RETARD zone**, full scale is considered to be the last marked reading prior to entering the RETARD zone. For example, this gauge has a full scale reading of 120 psi. Gauge accuracy is not specified in the RETARD zone.



°F - Fahrenheit Gauges			
UPC#	Description	Pressure scale	Refrigerants
49103	3-1/8" Red pressure	0 - 500 psi	R-12/22/134a
49104	3-1/8" Blue compound	30"-0-120** psi	
49105	3-1/8" Red pressure	0 - 500 psi	R-22/134a/404A
49106	3-1/8" Blue compound	30"-0-120** psi	
49111	3-1/8" Red pressure	0 - 500 psi	R-417A/422A/422D
49112	3-1/8" Blue compound	30"-0-120** psi	
49133	3-1/8" Heat pump red dial	0 - 800 psi	R-22/407C/410A
49134	3-1/8" Heat pump blue dial	0 - 800 psi	
49137	3-1/8" Red pressure	0 - 800 psi	R-22/404A/410A
49138	3-1/8" Blue compound	30"-0-350*** psi	
49141*	3-1/8" Heat pump red dial	0 - 800 psi	R-410A
49142*	3-1/8" Heat pump blue dial	0 - 800 psi	
49151	3-1/8" Red pressure	0 - 500 psi	R-134a/404A/407C
49152	3-1/8" Blue compound	30"-0-120** psi	
49157	3-1/8" Red pressure		
49158	3-1/8" Blue compound		

Universal Gauges			
UPC#	Description	Pressure scale	Refrigerants
49149	3-1/8" Red pressure	bar, KPa, psi	R-600
49150	3-1/8" Blue compound	bar, KPa, psi	
49155	3-1/8" Red pressure		R-32
49156	3-1/8" Blue compound		

Certified Gauges			
49203	3-1/8" Red pressure	0 - 500 psi	R-12/22/134a
49204	3-1/8" Blue compound	30"-0-120** psi	
49205	3-1/8" Red pressure	0 - 500 psi	R-22/134a/404A
49206	3-1/8" Blue compound	30"-0-120** psi	
49237	3-1/8" Red pressure	0 - 800 psi	R-22/404A/410A
49238	3-1/8" Blue compound	30"-0-350*** psi	
49251	3-1/8" Red pressure	0 - 500 psi	R-134a/404A/407C
49252	3-1/8" Blue compound	30"-0-120** psi	
49100	Replacement crystal		

°C - Celsius Gauges			
UPC#	Description	Pressure scale	Refrigerants
49107	3-1/8" Red pressure	kPa and psi	R-22/134a/404A
49108	3-1/8" Blue compound	kPa and psi	
49169	3-1/8" Red pressure	bar and psi	
49170	3-1/8" Blue compound	bar and psi	R-32/410A
49109*	3-1/8" Red pressure	kPa and psi	
49110*	3-1/8" Blue compound	kPa and psi	R-410A
49153	3-1/8" Red pressure	bar and MPa	
49154	3-1/8" Blue compound	bar and MPa	R-134a/404A/407C
49131	3-1/8" Red pressure	bar and psi	
49132	3-1/8" Blue compound	bar and psi	R-22/404A/410A
49139	3-1/8" Red pressure	psi	
49140	3-1/8" Blue compound	psi	R-410A
49141*	3-1/8" Heat pump red dial	0 - 800 psi	
49142*	3-1/8" Heat pump blue dial	0 - 800 psi	R-12/22/502
49145	3-1/8" Red pressure	bar and psi	
49146	3-1/8" Blue compound	bar and psi	R-32/410A
49147	3-1/8" Red pressure	MPa	
49148	3-1/8" Blue compound	MPa	R-134a/404A/407C
49159*	3-1/8" Red pressure	bar and psi	
49160*	3-1/8" Blue compound	bar and psi	R-12/134a/413A
49163	3-1/8" Red pressure	bar and MPa	
49164	3-1/8" Blue compound	bar and MPa	R-12/134a/413A
49165	3-1/8" Red pressure	bar and psi	
49166	3-1/8" Blue compound	bar and psi	R-134a/404A/407F
49181	3-1/8" Red pressure	bar and psi	
49182	3-1/8" Blue compound	bar and psi	R-134a/404A/407C
49231	3-1/8" Red pressure	bar and psi	
49232	3-1/8" Blue compound	bar and psi	R-12/22/502
49245	3-1/8" Red pressure	bar and psi	
49246	3-1/8" Blue compound	bar and psi	R-32/410A
49259	3-1/8" Red pressure	bar and psi	
49260	3-1/8" Blue compound	bar and psi	R-134a/404A/407C
49263	3-1/8" Red pressure	bar and MPa	
49264	3-1/8" Blue compound	bar and MPa	R-12/134a/413A
49265	3-1/8" Red pressure	bar and psi	
49266	3-1/8" Blue compound	bar and psi	R-22/134a/404A
49269	3-1/8" Red pressure	bar and psi	
49270	3-1/8" Blue compound	bar and psi	Replacement crystal
49100	Replacement crystal		


* These gauges have °C and °F on dial.



3-1/2" (90 mm) LIQUID-FILLED MANIFOLD GAUGES (°F and °C) RED AND BLUE

With 1% accuracy (Class 1) calibration



Gauges are completely filled with glycerin for maximum protection from pulsation. Large 3-1/2" (90 mm) diameter gauge with refrigerants color-coded on the dials in bold numbers. Offset stem fits all major manifold brands. 

- Now with zero adjustment
- 1/8" NPT Male connection
- Temperature rating of 0° to 122°F (-18° to 50°C)
- Calibrated to 1% accuracy (Class 1)

°F - Fahrenheit and °C - Celsius Gauges

UPC#	Description	Pressure scale	Refrigerants
49511	3-1/2" Red pressure	0-500 psi (0 to 34 bar)	R-22
49512	3-1/2" Blue compound	30"-0-120 psi (-1 to 8 bar)	
49519	3-1/2" Red pressure	0-800 psi (0 to 55 bar)	R-410A
49520	3-1/2" Blue compound	30"-0-300* psi (-1 to 21 bar)	

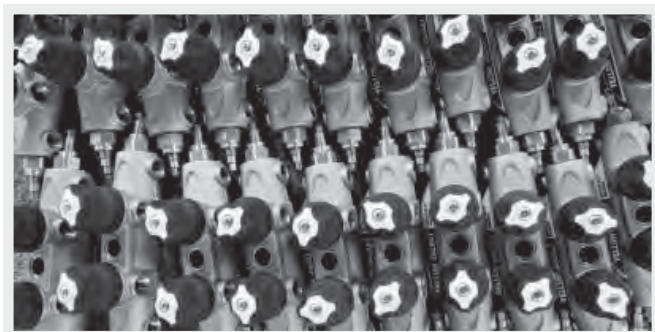
°F - Fahrenheit Gauges

UPC#	Description	Pressure scale	Refrigerants
49513	3-1/2" Red pressure	0-500 psi	R-22/134a/404A
49514	3-1/2" Blue compound	30"-0-120 psi	
49515	3-1/2" Red pressure	0-800 psi	R-22/410A
49516	3-1/2" Blue compound	30"-0-300* psi	
49517	3-1/2" Red pressure	0-500 psi	R-134a/404A/407C
49518	3-1/2" Blue compound	30"-0-120 psi	

°C - Celsius Gauges

UPC#	Description	Pressure scale	Refrigerants
49521	3-1/2" Red pressure	0-500 psi (0 to 35 bar)	R-134a/404A/407C
49522	3-1/2" Blue compound	30"-0-116 psi (-1 to 8 bar)	

*Features retard protection to 500 psi.



2-1/2" (68 mm) MANIFOLD GAUGES (°F and °C) RED AND BLUE Class B



- Steel case with 3-2-3% accuracy
- High-visibility dials - colored temperature scales for easy reading;
- Flutterless™ technology surge protector minimizes the needle pulsation for improved accuracy
- 1/8" NPT Male connection; calibration traceable to NIST standards

°F - Fahrenheit Gauges

UPC#	Description	Pressure scale	Refrigerants
49001	2-1/2" Red pressure	0 - 500 psi	R-12/22/502
49002	2-1/2" Blue compound	30"-0-120** psi	
49013*	2-1/2" Red pressure	0 - 500 psi	R-134a
49014*	2-1/2" Blue compound	30"-0-120** psi	
49015	2-1/2" Red pressure	0 - 500 psi	R-22/134a/404A
49016	2-1/2" Blue compound	30"-0-120** psi	
49035*	2-1/2" Red pressure	0 - 800 psi/kg/cm ²	R-410A
49036*	2-1/2" Blue compound	30"-0-300*** psi/kg/cm ²	
49051	2-1/2" Red pressure	0 - 500 psi	R-134a/404A/507
49052	2-1/2" Blue compound	30"-0-120** psi	
49053*	2-1/2" Red pressure	0 - 55 bar (0-5.5 MPa)	R-410A
49054*	2-1/2" Blue compound	-1 - 21 bar (-0.1 - 2.1 MPa)	
49010	Replacement crystal		

* These gauges have °C and °F on dial.

** Features retard protection to 350 psi.

*** Features retard protection to 500 psi.

Note: Small screw in back is 6/32" x 5/32" Phillips pan head screw.

Note: Gauges not meant to be used with nitrogen.


°C - Celsius Gauges

UPC#	Description	Pressure scale	Refrigerants
49005	2-1/2" Red pressure	bar and psi	R-12/22/502
49006	2-1/2" Blue compound	bar and psi	
49027	2-1/2" Red pressure	kg/cm ² and psi	R-12/22/502
49028	2-1/2" Blue compound	kg/cm ² and psi	
49031	2-1/2" Red pressure	bar and psi	R-22/134a/407C
49032	2-1/2" Blue compound	bar and psi	
49033	2-1/2" Red pressure	bar and psi	R-22/134a/404A
49034	2-1/2" Blue compound	bar and psi	
49055	2-1/2" Red pressure	bar and psi	R-134a/404A/507
49056	2-1/2" Blue compound	bar and psi	
49057	2-1/2" Red pressure	kg/cm ² and psi	R-134a/404A/507
49058	2-1/2" Blue compound	kg/cm ² and psi	
49063	2-1/2" Red pressure	bar and psi	R-134a/404A/407C
49064	2-1/2" Blue compound	bar and psi	
49010	Replacement crystal		

HEAVY DUTY 2-1/2" BRASS MANIFOLD GAUGES (°F and °C)

With 1% accuracy (Class 1) calibration



Solid brass case and premium movements. Heavy duty phosphor bronze and stainless steel internal components for longer service life under severe use. 

- Flutterless™ technology with brass surge protector to minimize needle pulsation

- 1/8" NPT Male connection
- Calibrated to 1% accuracy
- Full view glass crystal

UPC#	Description	Pressure scale	Refrigerants
49067	°F Brass pressure	0 - 500 psi	R-22/134a/404A
49068	°F Brass compound	30"-0-120* psi	
49073	°C Brass pressure	0 - 500 psi	R-134a/404A/407C
49074	°C Brass compound	30"-0-120* psi	
Certified Gauges			
49199	2-1/2" Brass pressure	0 - 500 psi	R-22/134a/404A
49200	2-1/2" Brass compound	30"-0-120* psi	
49010	Replacement crystal (polycarbonate) for old 49011, 49012		
49039	Glass crystal for brass gauge		
49040	Brass gauge ring		

*Features retard protection to 350 psi.
Note: Gauges are not meant to be used with nitrogen.

PROTECTIVE GAUGE BOOTS

For 2-1/2" and 3-1/8" gauges



- Rubber boots slip easily around gauges to cushion and protect them from impact
- Fit 2-1/2" or 3-1/8" gauges without covering easy access recalibration screw
- Color-coded red or blue to match gauge

UPC#	Description
49090	2-1/2" Set of gauge boots
49091	2-1/2" Red protective gauge boot
49092	2-1/2" Blue protective gauge boot
49190	3-1/8" Set of gauge boots
49191	3-1/8" Red protective gauge boot
49192	3-1/8" Blue protective gauge boot
49087	Red solar gauge boot
49088	Blue solar gauge boot
49089	Set red and blue solar gauge boots



RECOVERY MACHINES
 VACUUM PUMP SYSTEMS
 VACUUM AND CHARGING HOSES
 HOSE ADAPTERS, VALVES AND PARTS
 CHARGING SYSTEMS
 GAUGES
 WIRELESS AND ELECTRONIC INSTRUMENTS
 HEATING INSTRUMENTS
 LEAK MONITORS AND DETECTORS
 SYSTEM TOOLS



3-1/8" MECHANICAL VACUUM GAUGES



Full range mechanical Bourdon tube steel gauges for determining system vacuum is more accurate than a compound gauge. All gauges are 1/8" NPT Male bottom connection.

- Larger to show vacuum more accurately in inches of mercury and Torr (or millibar)

CAUTION: Vacuum gauges must be handled carefully. Dropping, pressurizing and rough handling reduce their life.

UPC#	Size	Scale	Connection	Case
69044	3-1/8"	0-30" Hg & 760-0 Torr	1/8" NPT Male lower	Green
69045	3-1/8"	1000-0 millibar & 30-0" (Euro)	1/8" NPT Male lower	Green

LOW PRESSURE DIAPHRAGM 2-1/2" GAUGES



- The bronze diaphragm is designed for better protection on incidental overpressure
- Intended for low pressure applications only
- Black steel case
- Cannot be recalibrated

UPC#	Description	Range
78056	2-1/2" Barb type connection	0-10" W.C.
78061	2-1/2" Barb type connection	0-35" W.C.
78057	2-1/2" 1/4" NPT Male connection	0-10" W.C.
78066	2-1/2" 1/4" NPT Male connection	0-35" W.C.

2-1/2" AMMONIA GAUGES With dual scale



Ammonia gauges are designed for use on manifolds and as permanent gauges on any system or equipment charged with ammonia. The Bourdon tube is made of 316 stainless. The dials show dual temperature and pressure scales. All gauges are equipped with restrictors to protect the gauges against pulsating pressure.

- 1/4" NPT Male connection
- Black steel gauges
- Steel sockets
- Calibrated to 3-2-3% accuracy

UPC #	Description	Range
40201	2-1/2" Gauge with twist on polycarbonate crystal	30" - 0 - 400 psi °F and -0.1-0-28 bar °C
40202	2-1/2" Gauge with twist on polycarbonate crystal	30" - 0 - 150 psi °F and -0.1-0-10 bar °C
49010	2-1/2" Replacement crystal	