

ELKAY®

SPECIFICATIONS

Gourmet™ Sink and Sink Packages

GENERAL

Highest quality sink formed of #18 (1.2mm) gauge, type 304 (18-8) nickel bearing stainless steel. Top mount.

DESIGN FEATURES

Bowl Depths: 6-1/8" (156mm) (BLR[Q]1560), 7-1/8" (181mm) (all others).

Coved Corners: 1-3/4" (44mm) vertical and horizontal radius. Bowl and Faucet Deck Recess: 3/16" (5mm) below outside edge of sink.

Finish: Exposed surfaces are hand blended to a Lustrous Highlighted Satin finish.

Underside: Fully undercoated to dampen sound and reduce

Sink complies with ASME A112.19.3/ CSA B45.4



Sinks are listed by IAPMO® as meeting the applicable requirements of the Uniform Plumbing Code®, International Plumbing Code®, and National Plumbing Code of Canada.



All sinks 6-1/2" or less in depth are compliant to ADA and ANSI/ICC A117.1 accessibility requirements when installed according to the requirements outlined in these standards.

SINK PACKAGES

BLH15C Package includes:

- (1) **BLR15** Sink.
- (1) **LKDA2437C** Faucet.
- (1) **LK36** Basket strainer.

BLR150C Package includes:

- (1) **BLR15** Sink.
- (1) **LKD2223C** Faucet.
- (1) **LK36** Basket strainer.

OTHER

Drain Openings: 3-1/2" (89mm) (BLR[Q]1516), 2" (51mm) (all others).

NOTE: Unless otherwise specified, sink is furnished with 1 faucet hole as shown.

OPTIONAL ACCESSORIES

Bottom Grid: LKWBG12090SS (BLH15C, BLR150C, BLR[Q]15, BLR[Q]1560).

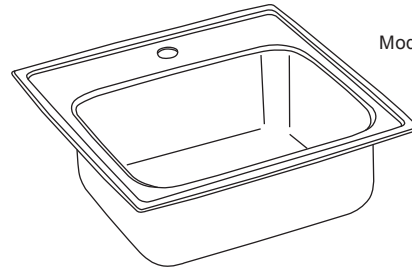
Cutting Board: CB912.

Drains: LK36 (BLH15C, BLR150C, BLR[Q]15, BLR[Q]1560), LK99 (BLR[Q]1516).

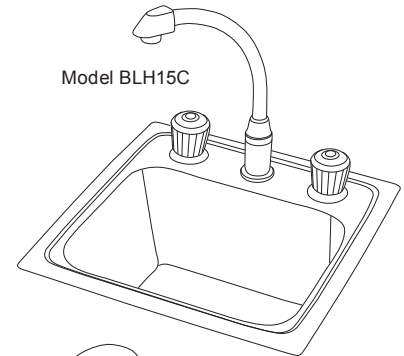
Installation hardware for thicker countertops: LK363 (up to 1-1/2" [38mm] thick); LK463 (up to 2-1/2" [66mm] thick).

Rinsing Basket: LKWWRB1209SS.

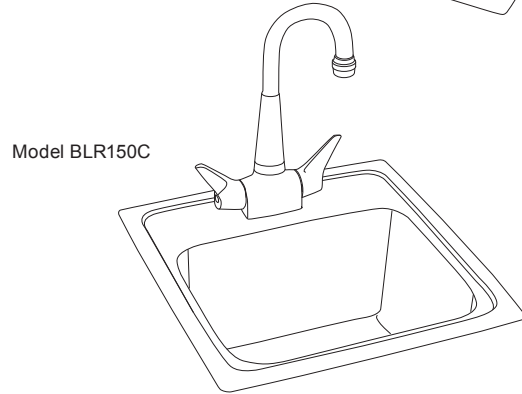
Utensil Caddy for Rinsing Basket: LKWUCSS.



Model BLR(Q)151



Model BLH15C



Model BLR150C



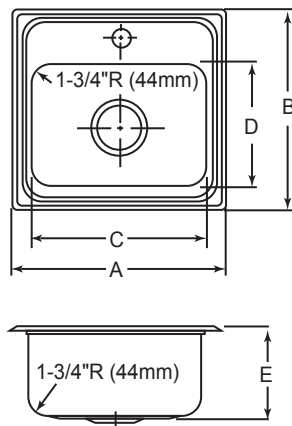
Gourmet™ Sink and Sink Packages

ELKAY® SPECIFICATIONS

SINK DIMENSIONS*

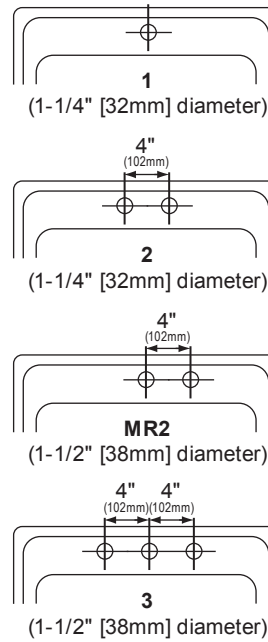
U-Channel Model Number	Quick-Clip® Model Number	Overall		Inside Bowl			Cutout in Countertop (1 1/2" [38mm] Radius Corners)		Drain Opening	No. of 1 1/4" (32mm) or 1 1/2" (38mm) Dia. Faucet Holes 4" (102mm) Centers	Minimum Cabinet Size
		L	W	L	W	D	L	W			
		A	B	C	D	E	L	W			
BLH15C	-	15 (381mm)	15 (381mm)	12 (305mm)	9 1/4 (235mm)	7 1/8 (181mm)	14 3/8 (365mm)	14 3/8 (365mm)	2-3/16 (56mm)	3	18 (457mm)
BLR150C	-	15 (381mm)	15 (381mm)	12 (305mm)	9 1/4 (235mm)	7 1/8 (181mm)	14 3/8 (365mm)	14 3/8 (365mm)	2-3/16 (56mm)	1	18 (457mm)
BLR15	BLRQ15	15 (381mm)	15 (381mm)	12 (305mm)	9 1/4 (235mm)	7 1/8 (181mm)	14 3/8 (365mm)	14 3/8 (365mm)	2-3/16 (56mm)	1, 2, MR2 or 3	18 (457mm)
BLR1516	BLRQ1516	15 (381mm)	15 (381mm)	12 (305mm)	9 1/4 (235mm)	7 1/8 (181mm)	14 3/8 (365mm)	14 3/8 (365mm)	3/2 (89mm)	1, 2, MR2 or 3	18 (457mm)
BLR1560	BLRQ1560	15 (381mm)	15 (381mm)	12 (305mm)	9 1/4 (235mm)	6 1/8 (156mm)	14 3/8 (365mm)	14 3/8 (365mm)	2-3/16 (56mm)	1, 2, MR2 or 3	18 (457mm)

*Length is left to right. Width is front to back.

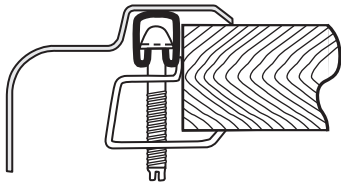


Model BLR151 Illustrated

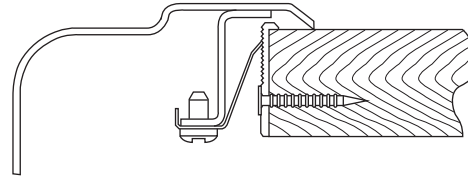
HOLE DRILLING CONFIGURATIONS



U-Channel Type Mounting System



Quick-Clip® Mounting System



In keeping with our policy of continuing product improvement, Elkay reserves the right to change product specifications without notice. Please visit elkay.com for the most current version of Elkay product specification sheets.

This specification describes an Elkay product with design, quality, and functional benefits to the user. When making a comparison of other producers' offerings, be certain these features are not overlooked.