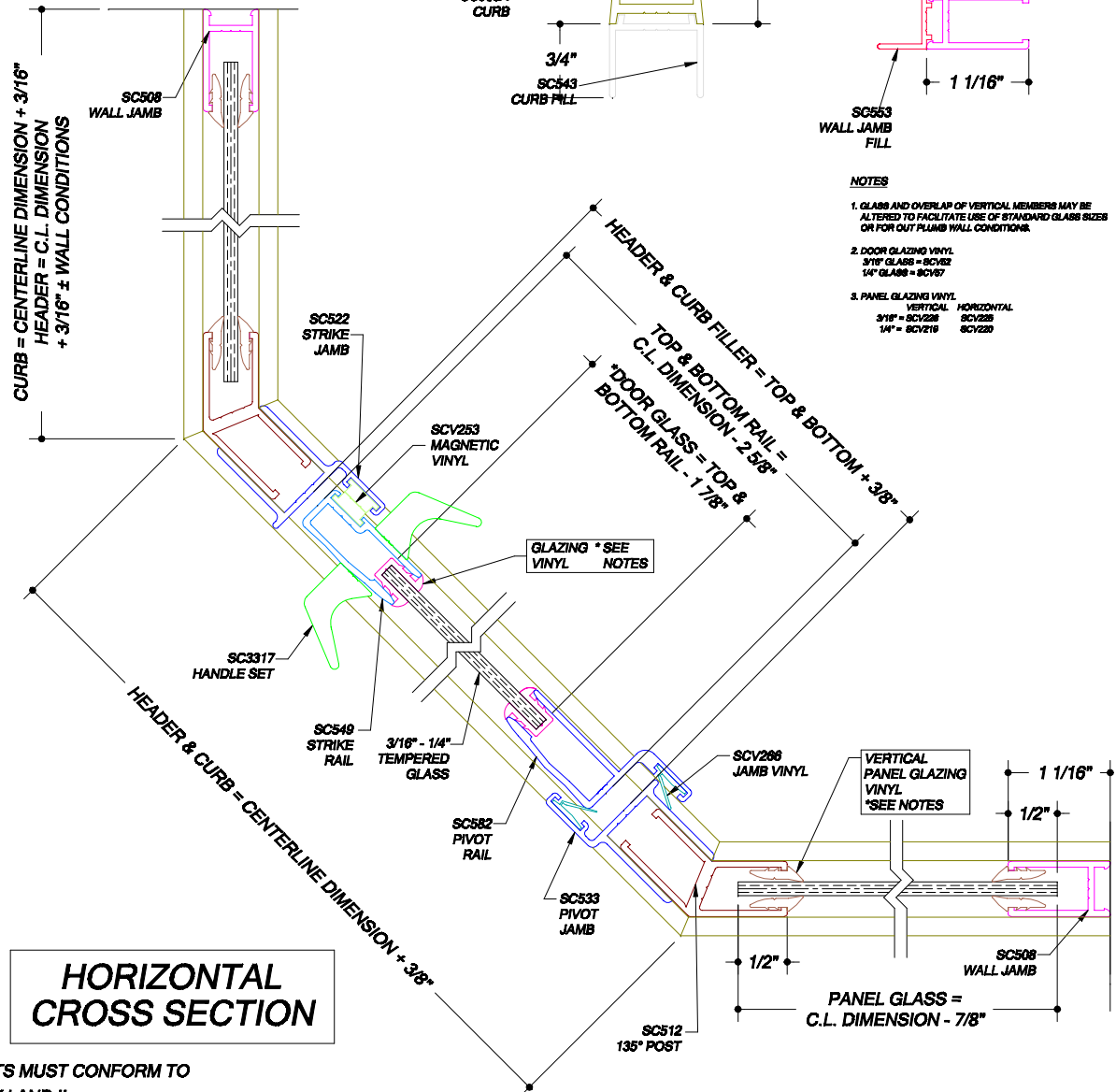


VERTICAL CROSS SECTION

CURB = CENTERLINE DIMENSION + 3/16"
 HEADER = C.L. DIMENSION
 + 3/16" ± WALL CONDITIONS



HORIZONTAL CROSS SECTION

- NOTES**
1. GLASS AND OVERLAP OF VERTICAL MEMBERS MAY BE ALTERED TO FACILITATE USE OF STANDARD GLASS SIZES OR FOR OUT PLUMB WALL CONDITIONS.
 2. DOOR GLAZING VINYL
 3/16" GLASS = SCV82
 1/4" GLASS = SCV87
 3. PANEL GLAZING VINYL
 VERTICAL HORIZONTAL
 3/16" = SCV228 SCV225
 1/4" = SCV210 SCV220

NOTE: GLAZING MATERIAL FOR ALL KD UNITS AND GLAZED UNITS MUST CONFORM TO ANSI Z97.1 AND CPSC STANDARD 16 CFC 1201 CATEGORY I AND II.

REV. #1
 DATE: 9/2/06

SERIES	UNIT	WIDTH & HEIGHT	DOOR GLASS	PANEL GLASS
160 760 FRAMED THINLINE	160	36" X 32 1/4" X 36" X 68 5/8"	WIDTH AS DETERMINED* HEIGHT= 63 1/2"	WIDTH AS DETERMINED* HEIGHT= 67 1/2"
	760	36" X 32 1/4" X 36" X 72 1/8"	HEIGHT= 67"	HEIGHT= 71"



SHOWER ENCLOSURES
 7201 Snider Road - Mason, Ohio 45040

Phone (513) 573-1900 Toll Free 1-800-45-BASCO