



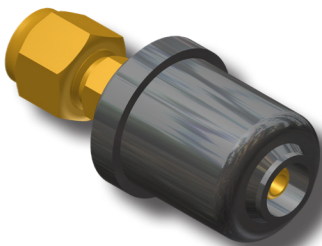
CON-STAB ID SEAL® Reducer Couplings



PE SIZE	WALL	PE SIZE	WALL	PART NUMBER (3408/4710)
3/4" CTS (7/8" OD)	.090	1/2" CTS (5/8" OD)	.090	3259-54-0604-00
1" CTS (1 1/8" OD)	.099/.101	3/4" IPS	SDR-11 (.095)	3259-54-0813-00‡
	.090			3259-54-0813-A0‡
	.099/.101	3/4" CTS (7/8" OD)	.090	3259-54-0806-00
	.090			3259-54-0806-A0
	.099/.101	1/2" IPS	SDR-9.33 (.090)	3259-54-0812-00
	.090			3259-54-0812-A0
.099/.101	1/2" CTS (5/8" OD)	.090	3259-54-0804-00†‡	
.090			3259-54-0804-A0‡	
1 1/4" CTS (1 3/8" OD)	.090	1" IPS	SDR-11	3259-54-3914-A0
		1" CTS (1 1/8" OD)	.099/.101	3259-54-3908-A0
			.090	3259-54-3908-AA
		3/4" IPS	SDR-11 (.095)	3259-54-3913-A0
		3/4" CTS (7/8" OD)	.090	3259-54-3906-A0
1/2" IPS	SDR-9.33 (.090)	3259-54-3912-A0		
1/2" IPS	SDR-9.33 (.090)	1/2" CTS (5/8" OD)	.090	3259-54-1204-00
3/4" IPS	SDR-11 (.095)	1/2" IPS	SDR-9.33 (.090)	3259-54-1312-00‡
		3/4" CTS (7/8" OD)	.090	3259-54-1306-00
		1/2" CTS (5/8" OD)	.090	3259-54-1304-00†‡
1" IPS	SDR-11 (.119)	1" CTS (1 1/8" OD)	.099/.101	3259-54-1408-00‡
			.090	3259-54-1408-A0
		3/4" IPS	SDR-11 (.095)	3259-54-1413-00†‡
		3/4" CTS (7/8" OD)	.090	3259-54-1406-00
		1/2" IPS	SDR-9.33 (.090)	3259-54-1412-00
1/2" CTS	.090	3259-54-1404-00†‡		
1 1/4" IPS	SDR-10 (.166)	1 1/4" IPS	SDR-11 (.151)	3259-54-1515-A0
	SDR-11 (.151)	1 1/4" CTS (1 3/8" OD)	.090	3259-54-1539-AA
	SDR-10 (.166)	1" IPS	SDR-11 (.119)	3259-54-1514-00‡
	SDR-11 (.151)			3259-54-1514-A0
	SDR-10 (.166)	1" CTS (1 1/8" OD)	.099/.101	3259-54-1508-00‡
	SDR-11 (.151)		.090	3259-54-1508-A0
			.099/.101	3259-54-1508-00
SDR-10 (.166)	3/4" IPS	SDR-11 (.095)	.090	3259-54-1508-AA
SDR-11 (.151)			3259-54-1513-00‡	
				3259-54-1513-A0
1 1/2" IPS	SDR-11 (.173)	1 1/4" IPS	SDR-10 (.166)	3369-54-1615-00‡*
			SDR-11 (.151)	3259-54-1615-0A
2" IPS	SDR-11	1 1/2" IPS	SDR-11 (.173)	3259-54-1716-00‡
		1 1/4" IPS	SDR-10 (.166)	3369-54-1715-00*
		1 1/4" CTS (1 3/8" OD)	SDR-11 (.151)	3259-54-1715-0A
		1" IPS	.090	3259-54-1739-0A
		1" CTS (1 1/8" OD)	SDR-11 (.119)	3259-54-1714-00
			.099/.101	3259-54-1708-00
			.090	3259-54-1708-A0

- For sizes not listed, contact Continental Industries.
- Pressure rating—Designed to meet or exceed pressure rating of PE pipe per 49 CFR Part 192 and ASTM D2513.
- Recommended accessories;
 - Continental's Bladed Chamfering Tool. See page 30 for size combinations available.
- † = CSA Approved / ‡ = IAPMO/UPC Listed
- * = These fittings are only available in PE 2406 yellow.

CON-STAB ID SEAL® P.E. x Copper Transition Couplings



PE SIZE	WALL	COPPER SIZE	PART NUMBER (3408/4710)
1/2" CTS (5/8" OD)	.090	1/4" OD	9943-99-0062-00‡
		3/8" OD	9943-99-0063-00 †‡
		1/2" OD	9943-99-0064-00 †‡
		5/8" OD	9943-99-0065-00‡
3/4" IPS	SDR-11 (.095)	5/8" OD	9943-99-0066-00‡

- For sizes not listed, contact Continental Industries.
- Pressure rating—Designed to meet or exceed pressure rating of PE pipe per 49 CFR Part 192 and ASTM D2513.
- Recommended accessories;
 - Continental's Bladed Chamfering Tool. See page 30 for size combinations available.
- 45° Copper Flare made in accordance with SAE J513.
- Forged Flare nut made to ASTM B 283.
- † = CSA Approved / ‡ = IAPMO/UPC Listed