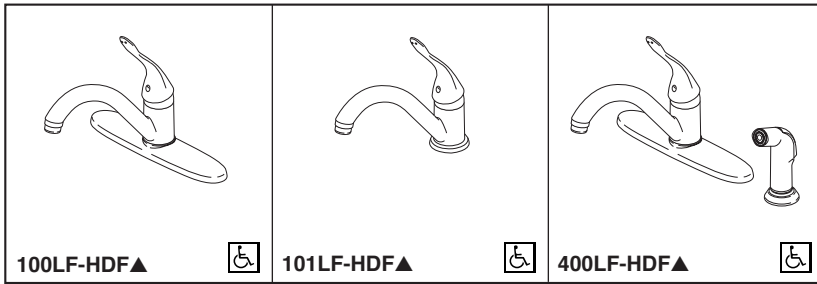




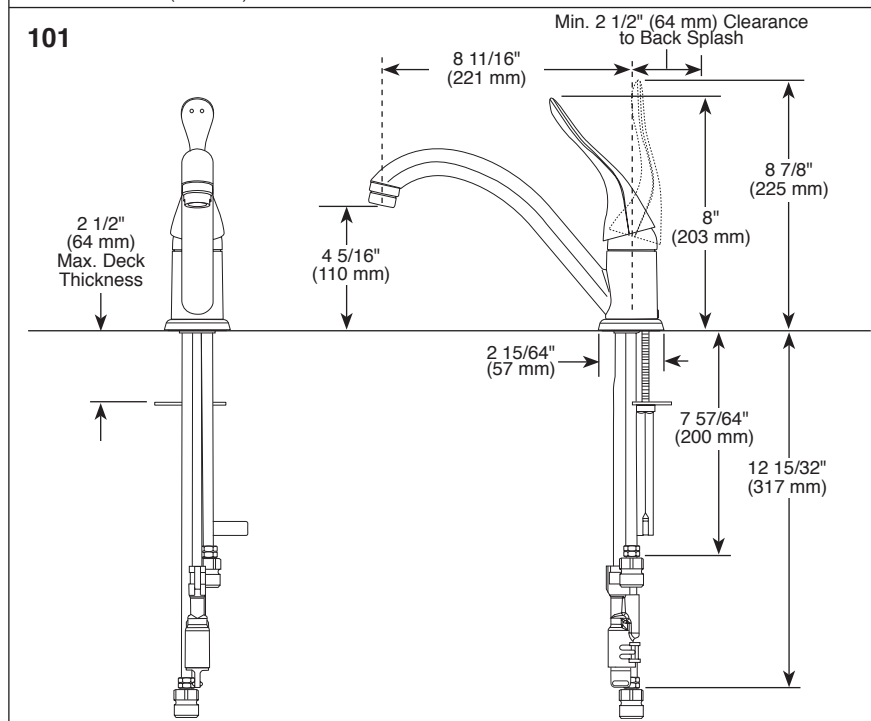
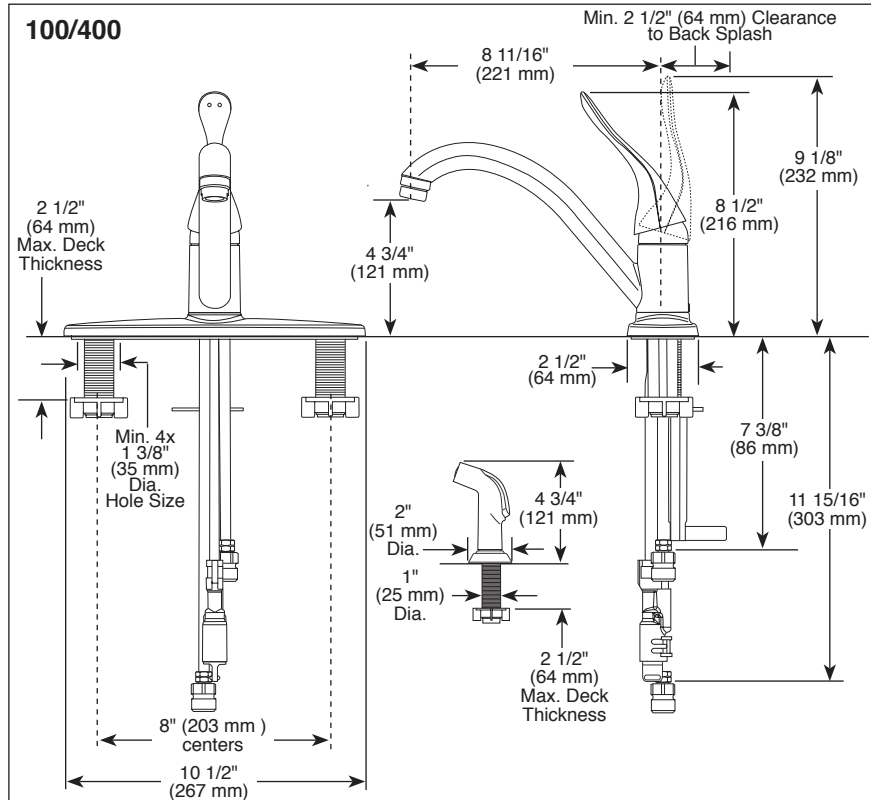
KITCHEN FAUCETS

- Single Handle
- Single, 3 and 4 Hole Sink Applications



Submitted Model No.: _____

Specific Features: _____



STANDARD SPECIFICATIONS:

- Single handle kitchen deck faucets for exposed mounting on single, three or four hole sinks.
- All metal fabricated body.
- 8 11/16" (221 mm) long spout swings 180°.
- 1.5 gpm (5.7L/min.) vandal resistant aerator.
- Vandal resistant lever handle.
- Lever handle shall return to neutral position when faucet is turned off.
- Red and blue on handle to indicate hot/cold temperature.
- Control mechanism shall be the diamond coated ceramic cartridge.
- Adjustable handle limit stop.
- 3/8" O.D. straight, staggered copper supply tubes with 3/8" fittings.
- Model 400 series with 45" (1143 mm) hose and spray attachment has anti-siphon device as integral part of faucet.
- Mounts on standard 1 3/8" (35 mm) diameter holes on 8" (203 mm) centers.

▲ Designate proper finish suffix

WARRANTY

- Lifetime limited warranty on parts (other than electronic parts and batteries) and finishes: or, for commercial users, for 5 years from date of purchase.
- 5 year limited warranty on electronic parts (other than batteries); or, for commercial users, for 1 year from the date of purchase. No warranty is provided on batteries.

COMPLIES WITH:

- ASME A112.18.1 / CSA B125.1
- Indicates compliance to ICC/ANSI A117.1
- Verified compliant with .25% weighted average Pb content regulations.



55 E. 111th Street, Indianapolis, Indiana 46280
 350 South Edgeware Road, St. Thomas, ON N5P 4L1
 © 2014 Masco Corporation of Indiana

Delta reserves the right (1) to make changes in specifications and materials, and (2) to change or discontinue models, both without notice or obligation. Dimensions are for reference only. See current full-line price book or www.specselect.com for finish options and product availability.

DSP-K-100LF-HDF Rev. B