



# MINI SPLIT DUAL FAN STAND

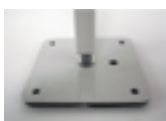
**QSMS1202/QSMS1802/QSMS2402**

**U.S. PATENT NO. 8,827,232 B2**

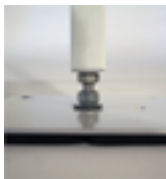
- Our Mini Split Dual Fan Stand provides a safe, stable platform to mount your unit on.
- Keeps it elevated above lawn mowers, weed whackers, pets, snow, and flooding.
- Allows for easy access during installation, service, and maintenance.



The Dual Fan Stand is made of 14-gauge square, steel tubing, and 11 gauge steel cross rails. This cuts down on vibration and enables the stand to hold up to 400 lbs.



Each foot is 6"x 6" 11 gauge steel and is adjustable up to 1.25" in height.



(4) 3/8" holes allow the stand to be bolted to any surface for security and stability.



Includes 50 deromater rubber foot pads and 4 anti-vibration isolation washers



Available in 12", 18" or 24" height 30.5" width X 38" depth.

QSMS1802/2402 includes 2 additional stabilization arms.



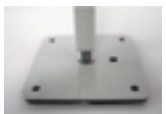
# MINI SPLIT DOUBLE STACK STAND

**QSMS1203**

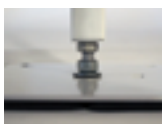
- Our Mini Split Double Stack Stand provides a safe, stable platform to mount your unit on.
- Keeps it elevated above lawn mowers, weed whackers, pets, snow, and flooding.
- Allows for easy access during installation, service, and maintenance.



The QSMS1203 stand is made of 14-gauge square, steel tubing which is powder coated for outdoor use. The bottom shelf holds 400 lbs. the top shelf holds 200 lbs.



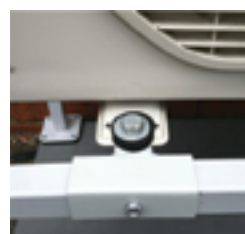
Each foot is 6"x 6" 11 gauge steel and is adjustable up to 1.25" in height.



(4) 3/8" holes allow the stand to be bolted to any surface for security and stability.



12 points of anti-vibration isolation washers are provided including four 50-deromater rubber pads for each foot.



Ground Height 12"  
Total Height 56"  
Width 36"  
Min. Slot Pattern 7 3/8"  
Max. Slot Pattern 13"