

**For Residential and Commercial Applications**

Job Name		Engineer / Architect	
Job Location		Wholesaler	
Submittal Date		Contractor	

## P1-\*\*A/ P3-\*\*A PEX Faucet Riser - One-Piece with Compression Sleeve or Insert

**Use:** For use in potable water distribution systems in accessible locations only.

\* Plastic tubing requires a plastic insert or sleeve (see 60PT & 63PT submittal forms for details).

**Design Features:**

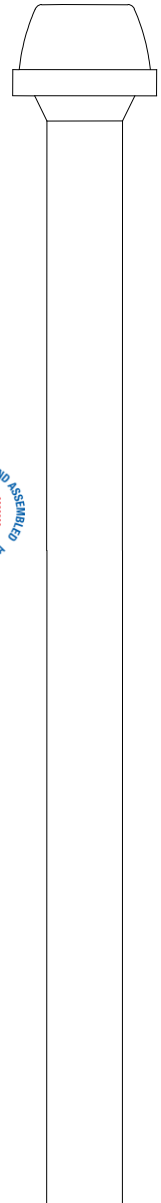
- **One-piece construction**
- **Cut-to-Length** for clean, professional installation
- **100% Compliant** to California and Vermont “low-lead” requirements



**Operating Specifications:**

**Temperature**     40° F to 150° F  
**Pressure:**         125 psi maximum

**Tubing Diameter:**     0.375" O.D. or 0.50" O.D.



MATERIAL SPECIFICATIONS	
<b>Tube</b>	Cross-linked Polyethylene (PEX)
<b>Compression Sleeve (3/8"OD)</b>	POM
<b>Compression Insert (1/2"OD)</b>	Stainless steel



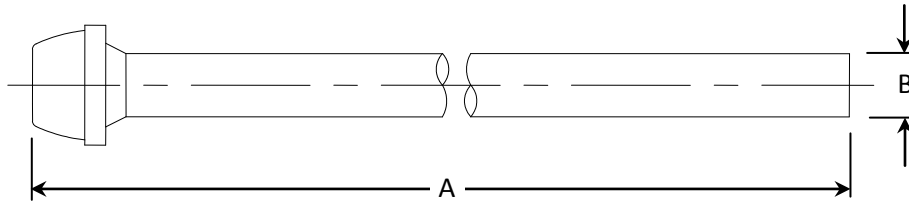
**Part Listing:**

- |                          |          |   |
|--------------------------|----------|---|
| <input type="checkbox"/> | P1-12A   | 3/8" OD tube x 11-1/2" length             |
| <input type="checkbox"/> | P1-12A F | 3/8" OD tube x 11-1/2" length, flag label |
| <input type="checkbox"/> | P1-15A   | 3/8" OD tube x 14-1/2" length             |
| <input type="checkbox"/> | P1-20A   | 3/8" OD tube x 19-1/2" length             |
| <input type="checkbox"/> | P1-20A F | 3/8" OD tube x 19-1/2" length, flag label |
| <input type="checkbox"/> | P1-30A   | 3/8" OD tube x 29-1/2" length             |
| <input type="checkbox"/> | P1-30A F | 3/8" OD tube x 29-1/2" length, flag label |
| <input type="checkbox"/> | P1-36A   | 3/8" OD tube x 35-1/2" length             |
| <input type="checkbox"/> | P1-36A F | 3/8" OD tube x 35-1/2" length, flag label |
| <input type="checkbox"/> | P3-12A   | 1/2" OD tube x 11-1/2" length             |
| <input type="checkbox"/> | P3-15A   | 1/2" OD tube x 14-1/2" length             |
| <input type="checkbox"/> | P3-20A   | 1/2" OD tube x 19-1/2" length             |
| <input type="checkbox"/> | P3-20A F | 1/2" OD tube x 19-1/2" length, flag label |

*This specification and all information contained herein is the confidential and exclusive property of BrassCraft Manufacturing, and shall not be disclosed to others without the written consent of BrassCraft. This specification must be returned to BrassCraft if requested.*



# P1-\*\*A/ P3-\*\*A PEX Faucet Riser - One-Piece with Compression Sleeve or Insert



PART DIMENSIONS (Inches)		
Model	DIM. A	DIA. B
P1-12A	11.50	3/8
P1-15A	14.50	3/8
P1-20A	19.50	3/8
P1-30A	29.50	3/8

PART DIMENSIONS (Inches)		
Model	DIM. A	DIA. B
P1-36A	35.50	3/8
P3-12A	11.50	1/2
P3-15A	14.50	1/2
P3-20A	19.50	1/2

### Listings & Certifications:

- IAPMO listed to ASME A112.18.1-2005 / CSA B125.1-2005 (File # 0645)
- NSF listed to ASME A112.18.6, ASTM F876 & F877, ANSI/NSF 14 & 61, cNSFus-pw, B125, C1-TD, and Uniform Plumbing Code
- CSA approved to California Health & Safety Code 116875 and Vermont Bill S.152 (Project # 2174785)



*This specification and all information contained herein is the confidential and exclusive property of BrassCraft Manufacturing, and shall not be disclosed to others without the written consent of BrassCraft. This specification must be returned to BrassCraft if requested.*

**BrassCraft**<sup>®</sup>