

QSTD1000

U.S. Patent No. 8,827,232 B2

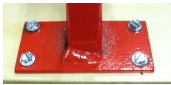
# QUICK-SLING™

## The safe & affordable install



### Quick Stand SPECS QSTD1000

#### A Close Up:



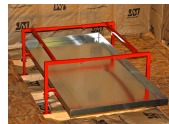
Each foot attaches to wood using 4 zip screws for stability & security.



20 points of anti-vibration isolation are provided using four 50-durometer self adhesive rubber pads & 16 rubber washers.



Each leg individually extends in 1" increments using thumb screws & wing nuts for speed and versatility. Installs as low as 22" on flat or uneven surfaces.



Secondary pan shelf is provided for convenient install & future maintenance.  
\*Drain pan not included.



Our Quick Stand is made of 14-gauge square tubing which not only cuts down on vibration but is also able to hold up to 500 lbs.



3 Dimensionally Adjustable:  
Height: 12"-22"  
Width: 32"-48"  
Length: 32"-48"

\*Powder Coated.

Quick Stand provides you with a non-swinging, solid platform that is quick, safe, and affordable.

Quick-Sling 391 West Water Street Taunton, MA 02780

P:1.800.699.0453 F:1.800.699.0423

[www.Quick-Sling.com](http://www.Quick-Sling.com)

\*As of 1/1/2015 Quick-Sling offers a 2-year warranty on steel & workmanship; Quick-Sling products are coated in accordance with ASTM D3451-06.