

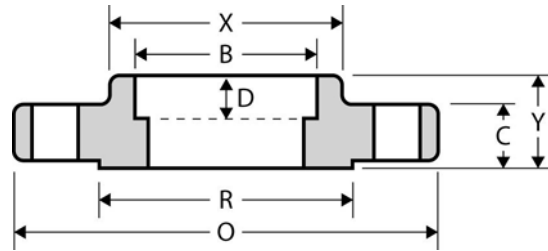


The Best Products, The Best Service...

SERVICE METAL

ONE CALL GETS IT ALL

Socket Weld Flange CLASS 300 Inches / Pounds



Nominal Pipe Size	Outside Diam. of Flange (O)	Thick. of Flange (C)	Diam. of Raised Face (R)	Diam. of Hub at Base (X)	Length thru Hub (Y)	Diam. of Bore (B)	Depth of Socket (D)	No. of Holes	Diam. of Holes	Diam. of Bolts	Diam. of Bolt Circle	Approx. Weight (in Pounds)
1/2	3.75	0.56	1.38	1.50	0.88	0.88	0.38	4	0.62	0.50	2.62	2
3/4	4.62	0.62	1.69	1.88	1.00	1.09	0.44	4	0.75	0.62	3.25	3
1	4.88	0.69	2.00	2.12	1.06	1.36	0.50	4	0.75	0.62	3.50	3
1 1/4	5.25	0.75	2.50	2.50	1.06	1.70	0.56	4	0.75	0.62	3.88	4
1 1/2	6.12	0.81	2.88	2.75	1.19	1.95	0.62	4	0.88	0.75	4.50	6
2	6.50	0.88	3.62	3.31	1.31	2.44	0.69	8	0.75	0.62	5.00	7
2 1/2	7.50	1.00	4.12	3.94	1.50	2.94	0.75	8	0.88	0.75	5.88	10
3	8.25	1.12	5.00	4.62	1.69	3.57	0.81	8	0.88	0.75	6.62	13
3 1/2	9.00	1.19	5.50	5.25	1.75	4.07	—	8	0.88	0.75	7.25	17
4	10.00	1.25	6.19	5.75	1.88	4.57	—	8	0.88	0.75	7.88	22
5	11.00	1.38	7.31	7.00	2.00	5.66	—	8	0.88	0.75	9.25	28
6	12.50	1.44	8.50	8.12	2.06	6.72	—	12	0.88	0.75	10.62	39
8	15.00	1.62	10.62	10.25	2.44	8.72	—	12	1.00	0.88	13.00	58
10	17.50	1.88	12.75	12.62	2.62	10.88	—	16	1.12	1.00	15.25	81
12	20.50	2.00	15.00	14.75	2.88	12.88	—	16	1.25	1.12	17.75	115
14	23.00	2.12	16.25	16.75	3.00	14.14	—	20	1.25	1.12	20.25	165
16	25.50	2.25	18.50	19.00	3.25	16.16	—	20	1.38	1.25	22.50	190
18	28.00	2.38	21.00	21.00	3.50	18.18	—	24	1.38	1.25	24.75	250
20	30.50	2.50	23.00	23.12	3.75	20.20	—	24	1.38	1.25	27.00	315
24	36.00	2.75	27.25	27.62	4.19	24.25	—	24	1.62	1.50	32.00	475

* Dimensions conform to ASTM A/SA-105; ANSI B16.5