



QUALITY GUARANTEE

This product is guaranteed against all defects in workmanship and materials for the original owner for one year from the date of purchase. Damage to or failure of the flashlight or any component thereof due to alteration, misuse, battery leakage or lack of maintenance will void any and all guarantees. Damage by leakage of batteries should be taken up with the manufacturer of the battery using their damage claim instructions. For any additional information call 1-800-255-6061.

The Exporting or Re-Exporting of U.S. Controlled Items without proper approval from the U.S. State or Commerce Departments is strictly prohibited.

All copyrighted and copyrightable materials, including, without limitation, the logo, design, text, graphics, pictures, copywriting and the selection and arrangement ("Materials") thereof are ALL RIGHTS RESERVED Copyright © 2019 Alliance Sports Group.

Distributed by NEBO®

A Division of Alliance Sports Group LP - 3025 N. Creed Southwest Parkway
Grand Prairie, Texas 75050 - 800-255-6061 - www.nebotools.com

Designed in Texas. Manufactured in China

WARNING

AVOID EYE INJURY: Do not stare directly into beam or other light source. Do not use flashlight to illuminate eyes. Do not use flashlight to illuminate eyes. Do not use flashlight to illuminate eyes. Do not use flashlight to illuminate eyes.

Warning: This product may contain a chemical known to the state of California to cause cancer and birth defects and other reproductive harm.

CAUTION

Do not mix old and new batteries. Do not mix alkaline, NiMH, NiCd, or lead acid batteries. Do not use rechargeable or non-rechargeable batteries. Dispose of all batteries properly.

NEBO[®] DUO²⁵⁰⁺ LUMEN HEADLAMP

USER MANUAL
ITEM #6444

LIGHTING INSTRUCTIONS

Press button 1x to activate Spot light mode. Press 2x to activate Flood light mode. Press 3x to activate Red Flood light mode. Press 4x to activate Red Beacon mode. Press again to turn Off.

Note: Leave any mode On for 5 seconds or longer and the next press of the button turns light Off.

Lighting sequence: Focused ~ Flood ~ Red ~ Red Beacon



FOCUSED - HIGH
250 Lumens of white light
Run Time: 3.5 Hours
Viewing Distance: 122 Meters



FLOOD - HIGH
80 Lumens of white light
Run Time: 7 Hours
Viewing Distance: 13 Meters



RED FLOOD - HIGH
10 Lumens of red light
Run Time: 8 Hours
Viewing Distance: 4 Meters



RED BEACON
10 Lumens of red flashing light
Run Time: 48 Hours
Beacon light can be visible more than a mile away

FOCUSED - LOW
30 Lumens of white light
Run Time: 120 Hours
Viewing Distance: 39 Meters

FLOOD - LOW
8 Lumens of white light
Run Time: 30 Hours
Viewing Distance: 4 Meters

RED FLOOD - LOW
2 Lumens of red light
Run Time: 25 Hours
Viewing Distance: 2 Meters

MEMORY SETTING

The DUO is equipped with memory settings for each dimmable light mode: Spot light, COB White and Red have this feature. After you dim the light to your desired brightness, the memory will remember that setting as your memory setting.

- To access the memory settings, double-tap the button to activate Memory Power Setting when light is Off. Spot light will activate to the last memory brightness setting that was set.
- Press button again to move to next setting. Light will cycle through each light mode sequentially
- Press again to turn Off

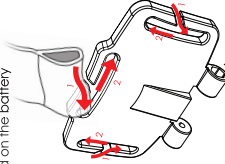
To reprogram the memory, simply dim each light to your new desired memory brightness level.

DIRECT-TO-RED

- Press and hold button for 2 seconds to activate red light
- Press again to turn Off

BATTERY INSTALLATION

- To change the batteries, remove battery compartment cover by lifting the clasp on the top side of the headlamp.
- Once clasp is free from the back piece, open the cover to reveal the battery compartment.
- Remove old batteries and dispose of properly. Insert new batteries making sure that the negative end (-) is facing the spring. Polarity markings are indicated on the battery compartment to assist in proper polarity positions.
- Reattach the casing by pressing together until it snaps shut.



HEAD STRAP INSTALLATION

- First, place the center strap by inserting as show in the illustration.
- Second, place the side strap by inserting as show in the illustration.
- Third, place the side strap by inserting as show in the illustration.

Adjust the straps to properly and securely fit your head.

DIMMING INSTRUCTIONS

Spot light and flood light both incorporate dimming feature.

- To begin dimming, press and hold the power button for 3 seconds. The light will blink 1x when the light reaches 10% or 100%.
- Release the button at any time to obtain desired brightness. (NOTE: If button is still pressed, light will continue to dim and rise between 100% and 10%.)
- To reset the light level, (spot light or flood light), power off the spot light and the headlamp will reset the light mode back to 100% brightness when you turn it back on.