

### Description

Sloan offers a wide range of 24 VAC step down transformers for use with Sloan Optima® flushometers and faucets. All Sloan transformers are Class II, UL Listed.

### Optima® Flushometers

When using Sloan Optima® "ES-S" flushometers, the transformer must be specified and ordered separately. The following two (2) transformers are recommended:

- EL-154** (Box Mount) 120 VAC Input/24 VAC Output, 50/60 Hz, 50 VA
- EL-342** (Box Mount) 240 VAC Input/24 VAC Output, 50/60 Hz, 50 VA
- EL-451** (Box Mount) 120 VAC Input/6 VAC Output, 50/60 Hz, 25 VA
- EL-208** (Foot Mount) 120 VAC Input/24 VAC Output, 50/60 Hz, 100 VA
- EL-386** (Plug-in) 120 VAC Input/6 VAC Output, 50/60 Hz, 1/2 Amp

One EL-154 or EL-342 transformer will power up to ten (10) OPTIMA "ES-S" water closet or urinal (any combination) flushometers.

### Optima® Faucets

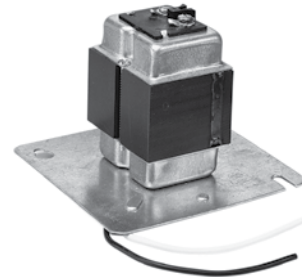
When using Sloan Optima® ETF or ESF Series faucets, the transformer must be specified and ordered separately. Sloan Optima® ETF Series faucets are typically supplied with a transformer. Transformers supplied with ETF Series faucets:

- ETF-233** (Plug-in) 120 VAC Input/24 VAC Output, 50/60 Hz, 35 VA
- ETF-416** (Plug-in - for Canada) 120 VAC Input/24 VAC Output, 50/60 Hz, 35 VA
- EL-248-40** (Box/Foot Mount) 120 VAC Input/24 VAC Output, 50/60 Hz, 40 VA

Some Optima® faucet installations can be powered by a single transformer, provided the transformer is properly sized. Allow a minimum of 15 VA of current rating for each faucet or solenoid valve being used. Specify and order the transformer separately. To order an "ETF" Series faucet less the transformer, specify the "LT" Variation.

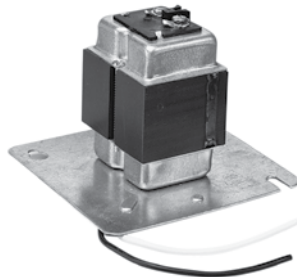


**ETF-233**  
(in Canada use ETF-416)



**EL-342**

For assistance in determining Transformer needs, contact Sloan at: 1-800-982-5839.



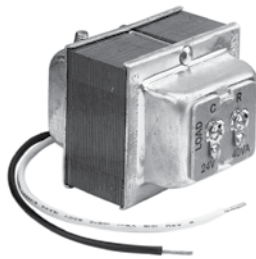
**EL-154**



**EL-248-40**  
(3 installation options)



**EL-208**



**EL-451**



**EL-386**

This space for Architect/Engineer approval

Job Name _____	Date _____
Model Specified _____	Quantity _____
Variations Specified _____	
Customer/Wholesaler _____	
Contractor _____	
Architect _____	

The information contained in this document is subject to change without notice.