



# TJERNLUND PRODUCTS, INC.

1601 Ninth Street • White Bear Lake, MN 55110-6794  
 PHONE (800) 255-4208 • (651) 426-2993 • FAX (651) 426-9547  
 Visit our web site • www.tjernlund.com

## HS4 POWER VENTER SPECIFICATIONS

### HS4 MOTOR SPECIFICATIONS

#### ELECTRICAL DATA

VOLTS	115
HERTZ	60
RPM	1725
HP	1/3
AMPS	5.8
THERM. PROT.	YES

#### MECHANICAL DATA

##### DESCRIPTION:

SPLIT PHASE CAP START	YES
OPEN	YES
INT. FAN COOLED	NO

##### CASING:

DIAMETER (IN)	5.63/48 FR
NOM. LENGTH (IN)	8.58

##### SHAFT:

DIAMETER (IN)	.500
NOM. LENGTH (IN)	1.56

##### BEARINGS:

TYPE	SLEEVE
MATERIAL	BABBITED STEEL

#### UC1 UNIVERSAL CONTROL

Maximum Power Consumption 1/2 Amp @ 120 VAC  
 50/60 Hz + Venter motor load

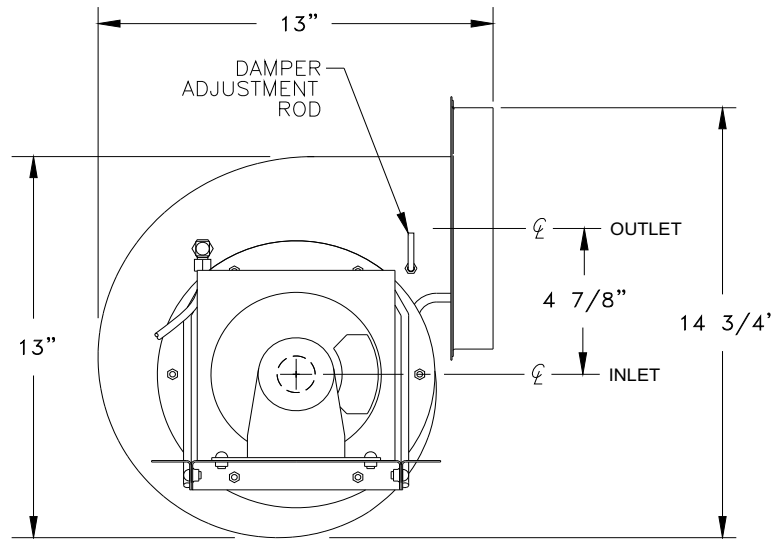
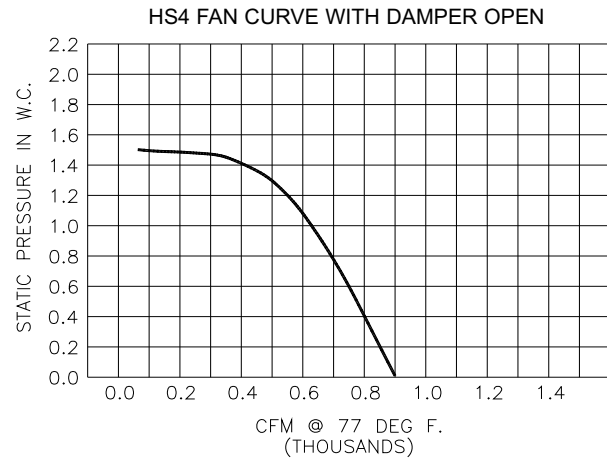
Pre-Purge: Options (0,15,30,60 seconds)

Post-Purge: Factory set at 2 minutes  
 Options (0,30 seconds; 1,2,4,8,16 minutes)

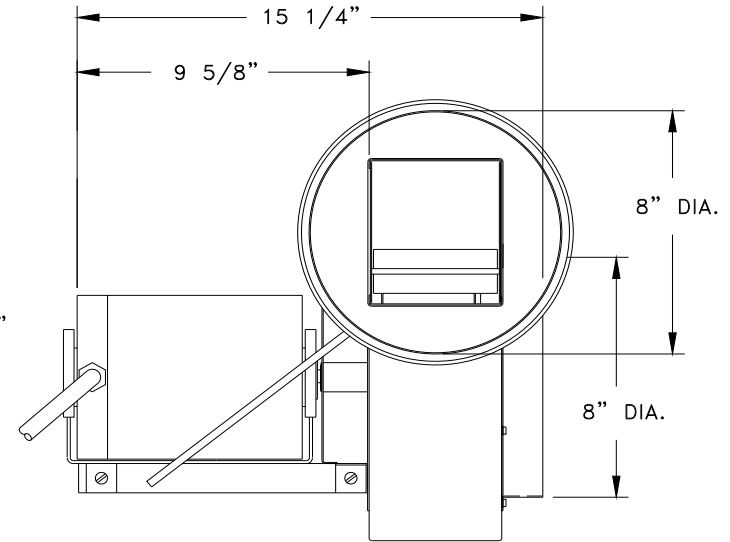
Dimensions: 5" x 8" (2' electrical whip inc.)

#### FAN PROVING SWITCH

5 VDC UC1 board supplied power switched through  
 Fan Prover. UC1 burner / gas valve interlock rated  
 for 1 H.P. @ 120 VAC.



— SIDE VIEW —



— END VIEW —

### DESCRIPTION OF APPLICATION

Used as a means of Side Wall Venting commercial gas appliances. Used also to co-vent multiple heaters within combined BTU/hr. input listed below (requires accessory controls). Includes a Fan Proving Switch and the UC1 Universal Control for 24V, 115V or "dry contact" actuation. LED diagnostics and Pre / Post-purge options are standard with the UC1.

#### HS-4 (Discontinued 7/02)

Replace with model HS4.

**Note:** Tjernlund Products, Inc. reserves the right to make changes to specifications without notification.

MODEL NUMBERS	VENT PIPE DIA.	BTU/HR INPUT	MAXIMUM PIPE LENGTH (FT) AT STACK TEMP	
			100% DILUTION, 300°F	25% DILUTION, 400°F
			GAS FIRED ATMOSPHERIC WITH DRAFT HOOD OR DRAFT DIVERTER	GAS FIRED POWER BURNER WITH BAROMETRIC DRAFT CONTROL
HS4  115 VAC 1/3 HP 5.8 AMP	8"	700,000	100'	100'
		800,000	100'	100'
		900,000	100'	100'
		1,000,000	70'	100'
		1,100,000	32'	100'
		1,200,000	5'	100'
	10"	700,000	100'	100'
		800,000	100'	100'
		900,000	100'	100'
		1,000,000	100'	100'
		1,100,000	97'	100'
		1,200,000	14'	100'
12"	700,000	100'	100'	
	800,000	100'	100'	
	900,000	100'	100'	
	1,000,000	100'	100'	
	1,100,000	100'	100'	
	1,200,000	34'	100'	