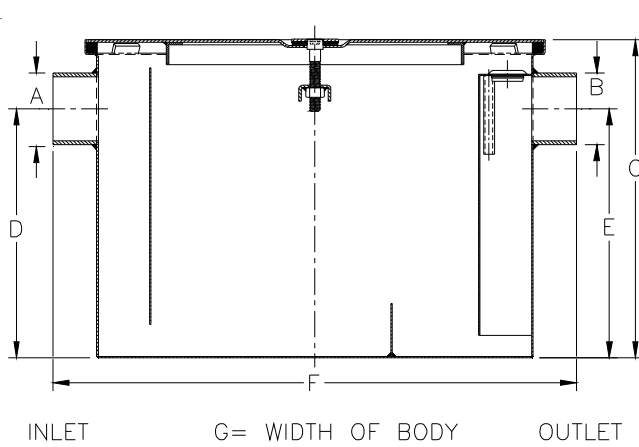
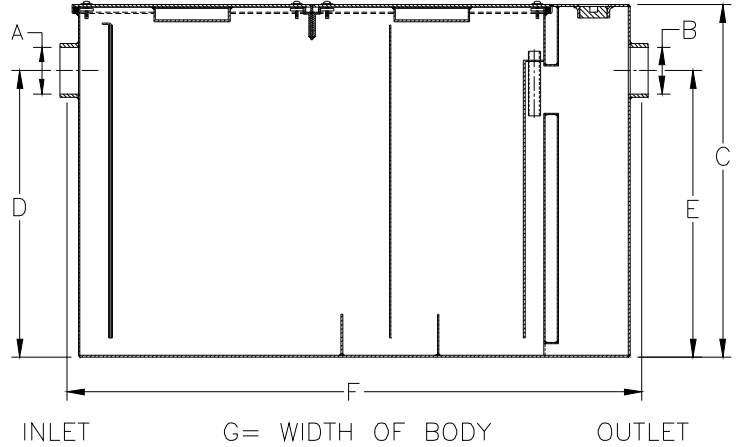


Dimensional Data (inches and [ mm ]) are Subject to Manufacturing Tolerances and Change Without Notice



GT2700-4 through GT2700-50



GT2700-75 & GT2700-100

Model Number	A/B Inlet/Outlet No-Hub	Flow Rate G.P.M. [L]	Capacity Grease Lbs. [kg]	Dimension in Inches			
				C	D/E	F	G
___ GT2700-4	2 [51]	4 [15]	8 [4]	10 [254]	7-1/4 [184]	15-7/8 [403]	9-7/8 [251]
___ GT2700-7	2 [51]	7 [26]	14 [6]	11-1/8 [283]	8-1/8 [206]	17-1/4 [438]	11-7/8 [302]
___ GT2700-10	2 [51]	10 [38]	20 [9]	11-3/4 [298]	8-1/4 [210]	19-1/4 [489]	14 [356]
___ GT2700-15	2 [51]	15 [57]	30 [14]	13-3/8 [340]	9-3/8 [238]	21-1/4 [540]	16-3/4 [425]
___ GT2700-20	3 [76]	20 [76]	40 [18]	15 [381]	11-3/4 [298]	24-1/8 [613]	17-1/4 [438]
___ GT2700-25	3 [76]	25 [94]	50 [23]	17 [432]	12-7/16 [316]	26-1/8 [644]	19-7/8 [505]
___ GT2700-35	4 [102]	35 [132]	70 [32]	18-3/4 [476]	14-3/16 [360]	28 [711]	22-1/2 [572]
___ GT2700-50	4 [102]	50 [189]	100 [45]	21-1/2 [546]	16 [406]	29-7/8 [759]	24-1/2 [622]
___ GT2700-75	4 [102]	75 [283]	150 [68]	22-3/4 [587]	18-1/2 [470]	36 [914]	28-5/8 [727]
___ GT2700-100	4 [102]	100 [379]	200 [91]	27 [685]	23 [584]	42-3/4 [1086]	33-5/8 [854]

**GT2700 Grease Interceptor**

Recommended for removing and retaining grease from wastewater in kitchen and restaurant areas where food is prepared. Grease trap is corrosion-resistant coated fabricated steel with no-hub connections, flow diffusing baffle, integral trap, and vented inlet flow control device.

**OPTIONS**

\_\_\_ -JP2700 6 [152] Extension



Sizes 4 - 50



Sizes 20 G.P.M. - 50 G.P.M.