

CODE NUMBER

3400335

DESCRIPTION

1.28 gpf, Filtered, Graphite Finish, Fixture Connection Rear Spud, Single Flush, Integrated Control Stop, Adjustable Flush Connection Outlet Tube, Electrical Override, Battery with Hardwired Option, Sensor-Operated, Short V500A & Adjustable Flush Connection Vacuum Breaker, Front Accessible Wall Box, Floor-mounted, CX Concealed Sensor Floor-mounted Water Closet Flushometer.

DETAILS

- Flush Volume: 1.28 gpf (4.8 Lpf)
- Finish: Graphite (GR)
- Power Type: Battery with Hardwired Option
- Battery Life: 5 years
- Valve: Piston
- Bypass: Filtered
- Valve Body Material: Semi-red Brass
- Fixture Type: Water Closet
- Closet Mounting: Floor-mounted
- Fixture Connection: Rear Spud
- Override: Electrical
- Wall Box: Front Accessible
- Control Stop: Integrated
- Vacuum Breaker: Short V500A & Adjustable Flush Connection
- Outlet Tube: Adjustable Flush Connection

FEATURES

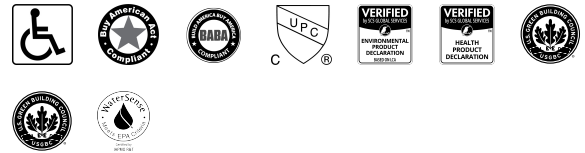
- Fixed volume piston with filtered O-ring bypass
- Front access wall plate requires no rear access plumbing chase
- Sensor activated, hands-free operation
- Battery operated with hardwired option
- Electronic override button
- Low battery indicator light
- Vandal resistant wall plate
- Adjustable flush connection
- Watersense compliant when used with a WaterSense compliant fixture

VIDEOS

- CX Flushometer Product Video
- CX Flushometer - Sensor Installation
- CX Flushometer - Sensor Vacuum Service
- CX Flushometer - Sensor Piston Service
- CX Flushometer Product Video (Spanish)
- PVD Special Finishes



COMPLIANCES & CERTIFICATIONS



(ADA Compliant, BAA Compliant, BABAA Compliant, cUPC Certified, EPD, HPD, LEED Materials & Resources EPD Credit, LEED Materials & Resources HPD Credit, WaterSense Listed)

ELECTRICAL SPECIFICATIONS

- Arming Delay: 8 seconds
- Battery Life: 5 years
- Control Circuit: 6 VDC Input
- Flush Delay: 3s
- Self-Adaptive Window: ±12
- Sensor Range: 22"-46" (559-1,168mm)
- Solenoid Operator: 6 VAC
- Transformers (specify separately):
 - EL-386 (Up to 1 flushometer)
 - EL-451 (up to 6 flushometers)

VALVE OPERATING PRESSURE (FLOWING)

20-80 PSI (138-552 kPa). Specific fixtures may require greater minimum flowing pressure - consult manufacturer requirements.

DOWNLOADS

- [CX 8158/8198 Installation Instructions](#)
- [CX 8158/8198 Repair and Maintenance Guide](#)
- [Additional Downloads](#)

NOTES

All information contained within this document subject to change without notice.

Looking for other variations of the CX 8154 product? [View the general spec sheet with all options.](#)

WaterSense compliant when used with a WaterSense compliant fixture

Sloan 10500 Seymour Ave, Franklin Park, IL 60131

Phone: 800.982.5839 • Fax: 800.447.8329 • sloan.com

Battery life varies according to actual usage and restroom conditions.

WARRANTY

[View Warranty Information](#)

ROUGH-IN

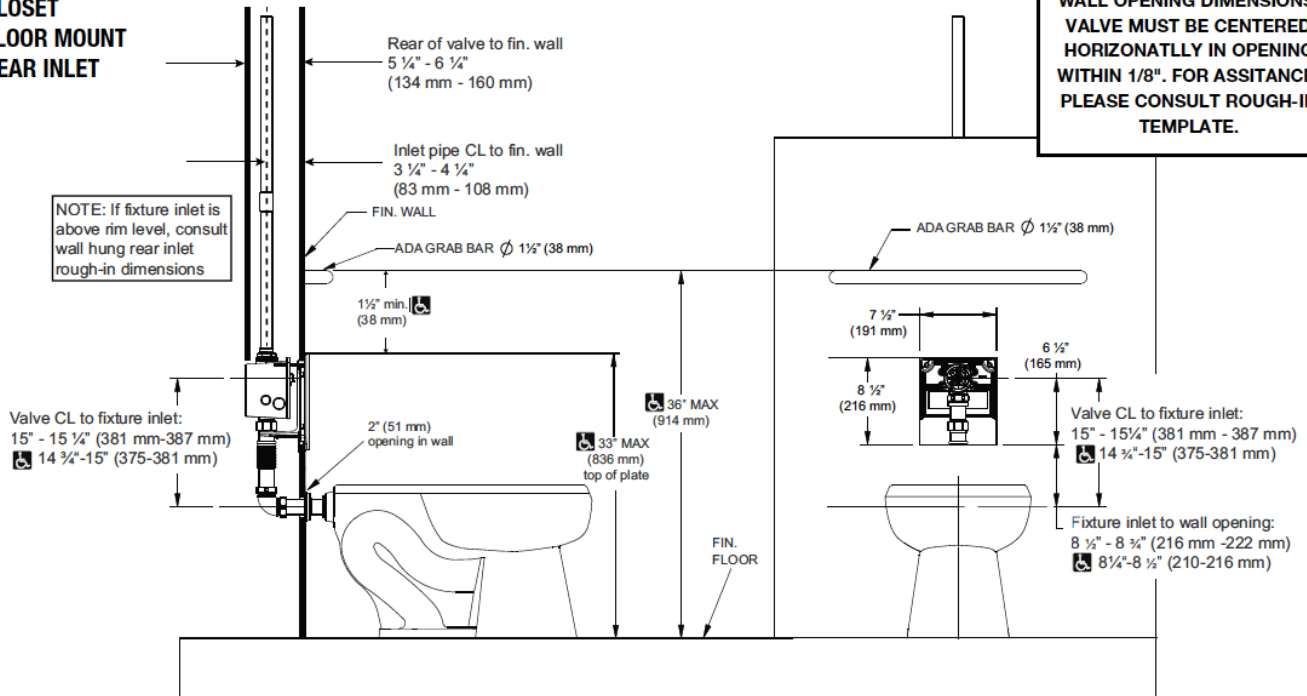
**MODEL 8154
CLOSET
FLOOR MOUNT
REAR INLET**

SIDE VIEW

FRONT VIEW

!!! IMPORTANT !!!
**ACCURACY IS IMPORTANT FOR
WALL OPENING DIMENSIONS.
VALVE MUST BE CENTERED
HORIZONTALLY IN OPENING
WITHIN 1/8". FOR ASSITANCE,
PLEASE CONSULT ROUGH-IN
TEMPLATE.**

NOTE: If fixture inlet is above rim level, consult wall hung rear inlet rough-in dimensions



Sloan 10500 Seymour Ave, Franklin Park, IL 60131

Phone: 800.982.5839 • Fax: 800.447.8329 • sloan.com