

# KSLS-3322

## Swanstone Large/Small Bowl Kitchen Sink

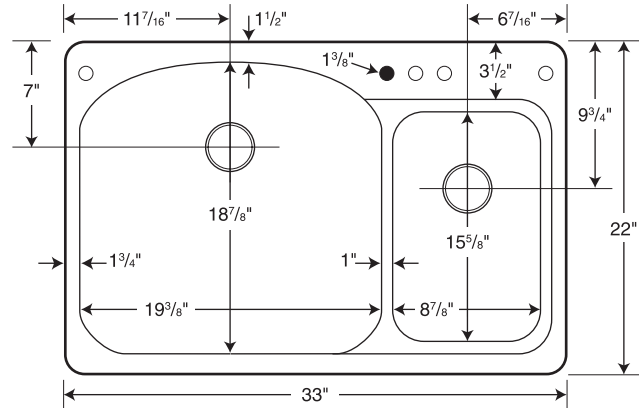
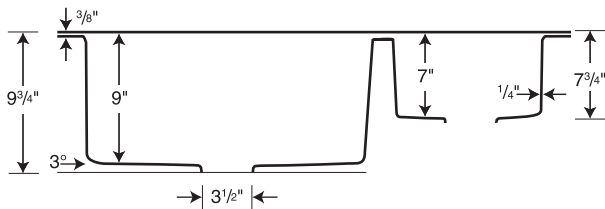


### Manufactured from Swanstone Solid Surface

Recommended for high-use traffic areas and commercial surfaces.

### FEATURES

- Designed with gourmet-style prep and clean-up features.
- Renewable surface will not wear away.
- Hot pots and boiling water will not damage it.
- Highest resistance of impact from heavy objects.
- Easily accommodates all faucet styles.
- Heat, stain and scratch resistant for lasting beauty.
- Warranty: Limited Lifetime - Residential  
Limited 10-year - Commercial



○ Drill Points    ● Pre-drilled

Capacity: 13 3/4 gallons in large (left) bowl,  
4 gallons in small (right) bowl

### SPECIFICATIONS

Model	Part	Nominal Dimensions	Ship Wt. Lb.	Ship FedEx	Carton Dims. In.	Cu. Ft.
KSLS-3322	KS03322LS	33" W x 22" D (838 mm x 559 mm)	30	FedEx	38 x 25 x 13	7.15

### COLORS

#### Solid Colors:

- White (010)
- Bisque (018)
- Bone (037)

#### Aggregate Colors:

- Arctic Granite (035)
- Baby's Breath (168)
- Barley (091)
- Bermuda Sand (040)
- Canyon (124)
- Cloud Bone (126)
- Cloud White (125)
- Glacier (121)
- Golden Steppe (128)
- Gray Granite (042)
- Ice (130)
- Mountain Haze (129)
- Night Sky (012)
- Pebble (072)
- Prairie (122)
- Tahiti Desert (050)
- Tahiti Gray (053)
- Tahiti Ivory (059)
- Tahiti Matrix (058)
- Tahiti Sand (051)
- Tahiti White (011)
- Tundra (131)

### STANDARDS AND RATINGS

American National Standard Institute—  
ANSI Z124.6

International Association of Plumbing and  
Mechanical Officials (IAPMO)—Listed

cUPC listed—Certified to CSA Test Standard  
B45.5 by IAPMO

Uniform Plumbing Code (UPC)

National Sanitation Foundation—NSF/ANSI 51  
Food Equipment Materials

For a complete list of tests and results see  
the Technical Data Sheet.

### SUPPORT DOCUMENTS

Installation instructions available at  
[swanstone.com](http://swanstone.com).

### MAINTENANCE AND CLEANING INFORMATION

Clean your Swanstone sink by using  
abrasive cleaners or other similar  
products. Use of a nylon scouring pad  
or Mr. Clean® Magic Eraser® is also  
recommended. Food-based stains can  
be removed using a 50-50 mix of bleach  
and water solution and soaking for 15  
minutes. For rust or other mineral stains,  
rust-removing products are acceptable.  
**Do not** use metal scouring pads.

