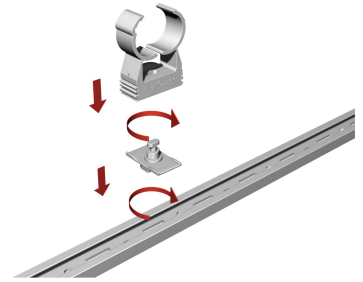
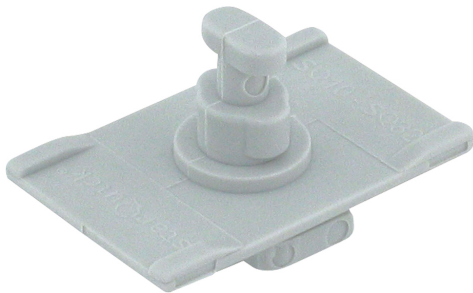


BIS starQuick® Rail Adaptor

accessories BIS starQuick® Rail



Features and benefits

- suitable for BIS starQuick® Clamps up to Ø 1 1/4" CT
- for fixing of a BIS starQuick® Clamp (without nut) on a BIS starQuick® Rail or on a Strut-Adaptor (Part No. 085 4 331)
- material: modified PA6 (polyamide), grey (according to RAL 7035)
- resistant to UV, aging, oil and gasoline
- corrosion-free, recyclable, halogen free
- temperature resistance: -40 °F to 200 °F constant, +270 °F peak

Part No.	For	Pack 1	Pack 2
085 4 313	BIS starQuick®	20	200

