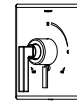


S3691TRM

Shower Trim

Specification Submittal

Location:



Model Numbers

- ☐ **S3691TRM**
Shower Trim
- Valve Options:**
-S261 Series Temptrol Shower Valve with TRM modifier
-S161 Series Temptrol Shower Valve requires TC modifier

Feature Highlights

- Duro Shower Trim.
- Requires Temptrol® Pressure Balancing Shower Valve.
- Integral volume control.
- Metal lever handle.
- Single mode showerhead.
- Standard 2.0 gpm (7.6 L/min) flow restrictor.
- Components shall be metal and nonmetal construction, plated in standard polished chrome finish.

Compliance

- ASME A112.18.1/CSA B125.1
- WaterSense 1.5 gpm (5.7 L/min) 1.75 gpm (6.6 L/min) 2.0 gpm (7.6 L/min)
- Lever handle meets ADA requirements for operation



Options/ Modifications

- ☐ **15** 1.5 gpm (5.7 L/min) flow restrictor
- ☐ **175** 1.75 gpm (6.6 L/min) flow restrictor
- ☐ **L1** Less showerhead
- ☐ **L7** Less handle
- ☐ **MB** Matte Black finish
- ☐ **STN** Satin Nickel finish
- ☐ **BBZ** Brushed Bronze finish
- ☐ **TC** Test Cap Trim (includes TA-10&T-12A) *used with S161 series Temptrol Shower Valve*

Warranty

Limited Lifetime - to the original end purchaser in consumer/residential installations.
10 Years - for commercial/industrial installations. Refer to www.symmons.com/warranty for complete warranty information.



SKU Builder

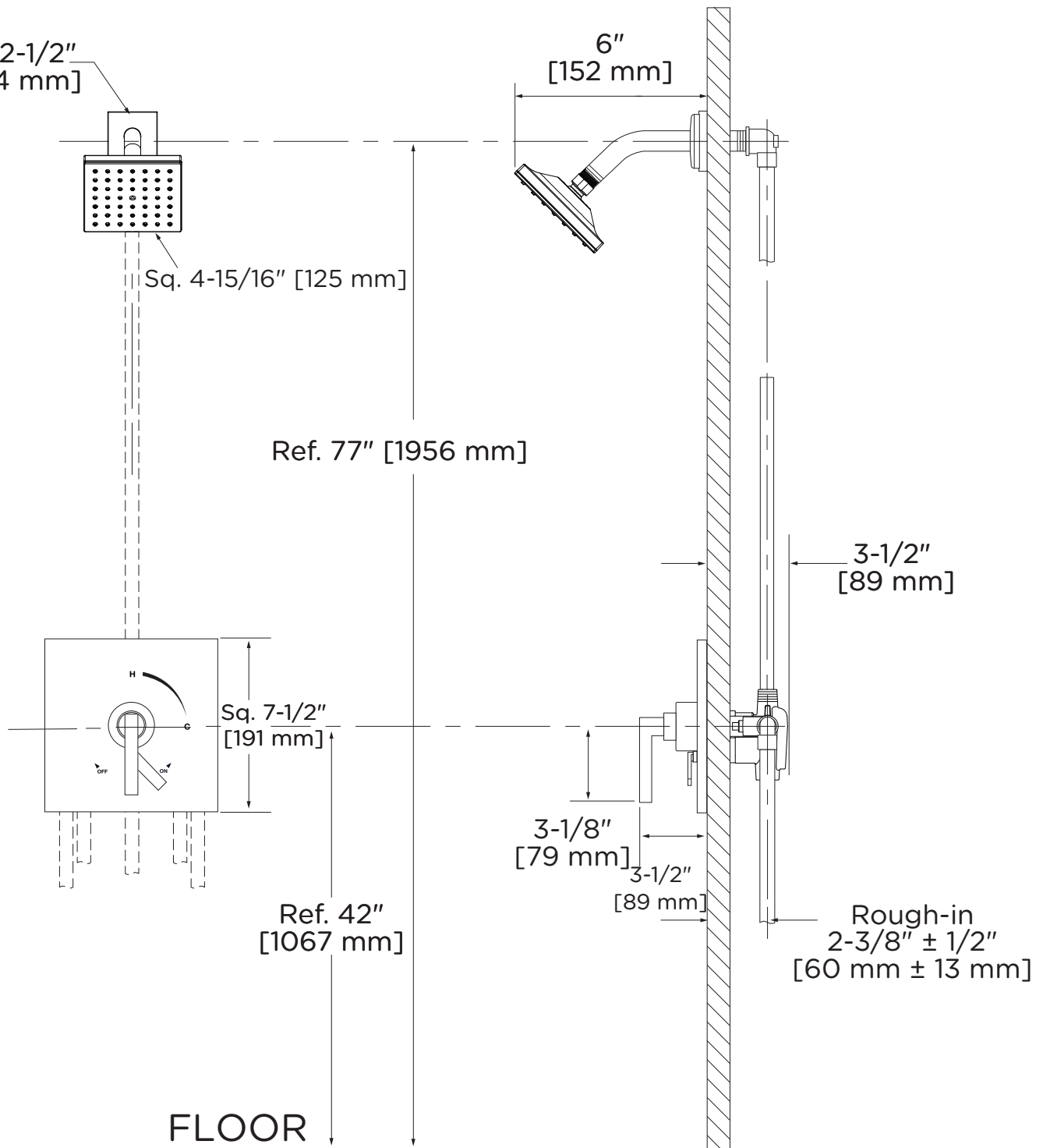
| Series | Finish | Modifier | Flow Rate | Trim (required) | Test Cap | Final SKU |
|--------|--------|----------|-----------|-----------------|----------|----------------|
| S3691 | STN | | 15 | TRM | | S3691STN15TRM |
| S3691 | MB | L7 | | TRM | TC | S3691MBL7TRMTC |

Note: No more than two modifiers (L1-L7) and modifier order will follow numerical order.

Architectural/ Engineering Specification

Symmons Duro Shower Trim _____ Includes Duro Shower Trim powered by Temptrol® Pressure Balancing Shower Valve. Features integral volume control, metal lever handle, single mode showerhead, and 2.0 gpm (7.6 L/min) flow restrictor. Components shall be metal and nonmetallic construction, plated in standard polished chrome finish. 10 Year Commercial Warranty. Lever handle meets ADA requirements for operation. ASME A112.18.1/CSA B125.1, WaterSense 1.5 gpm (5.7 L/min), 1.75 gpm (6.6 L/min), and 2.0 gpm (7.6 L/min) compliant. Available options: "15 - 1.5 gpm (5.7 L/min) flow restrictor", "175 - 1.75 gpm (6.6 L/min) flow restrictor", "L1 - Less showerhead", "L7 - Less handle", "TC - Test Cap Trim", "MB - Matte Black finish", "BBZ - Brushed Bronze finish", and "STN - Satin Nickel finish".

Dimensions



Notes:

- 1) Valve body and piping not included and shown as reference only.
- 2) Plaster shield (p/n T-176) for dry wall, plaster or other type walls 1/2" or greater.
- 3) All dimensions measured from nominal rough-in.
- 4) Dimensions subject to change without notice.