



VITREOUS CHINA

Urinal  
**HE-27-730**

LAVATORIES

TOILETS

BIDETS / URINALS

CAST IRON



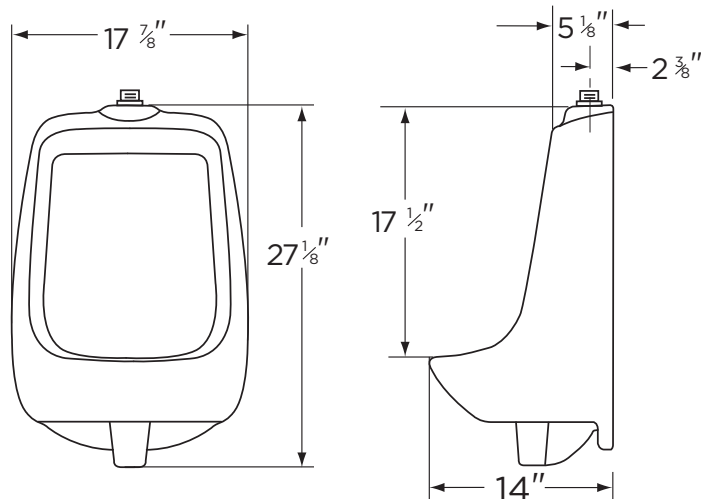
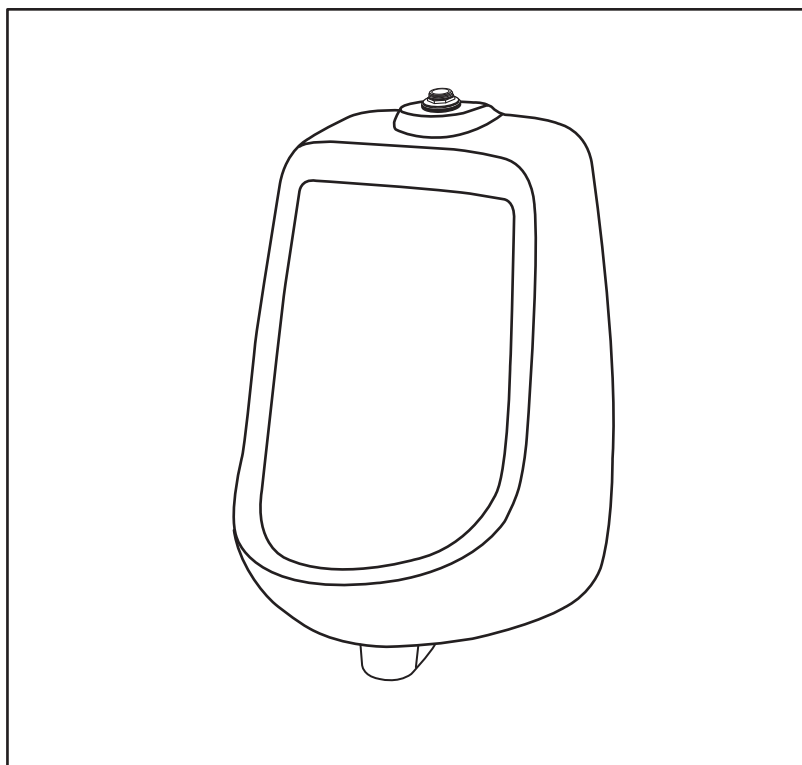
## **NORTHPOINT™ Top Spud Urinal**

### **Features:**

- High Efficiency Urinal 0.5 gpf (1.9 Lpf)
- Half Stall Size
- Flushing Rim
- Washout Flush Action
- Elongated Rim (14" from finished wall)
- 3/4" Inlet Top Spud for Exposed Flushometer
- Outlet Connection Threaded 2" Inside (NPTF)
- Dual Wall Hangers
- ADA compliant

### **Dimensions:**

Height ..... 27 1/8"  
Width ..... 17 7/8"  
Depth ..... 14"  
Inlet ..... 3/4"  
Outlet ..... 2"  
Shipping Weight ..... 52 lbs



RECOMMENDED STATIC WATER  
PRESSURE FOR PLUMBING  
FIXTURES IS 20 - 80 PSI STATIC  
PER ANSI STANDARDS A112.19.2  
APPENDIX B

THIS FIXTURE QUALIFIES  
ACCORDING TO ASME TEST  
PROCEDURES AS A HIGH-  
EFFICIENCY URINAL WITH AN  
AVERAGE CONSUMPTION OF 0.5  
gpf (1.9 Lpf) OR LESS.

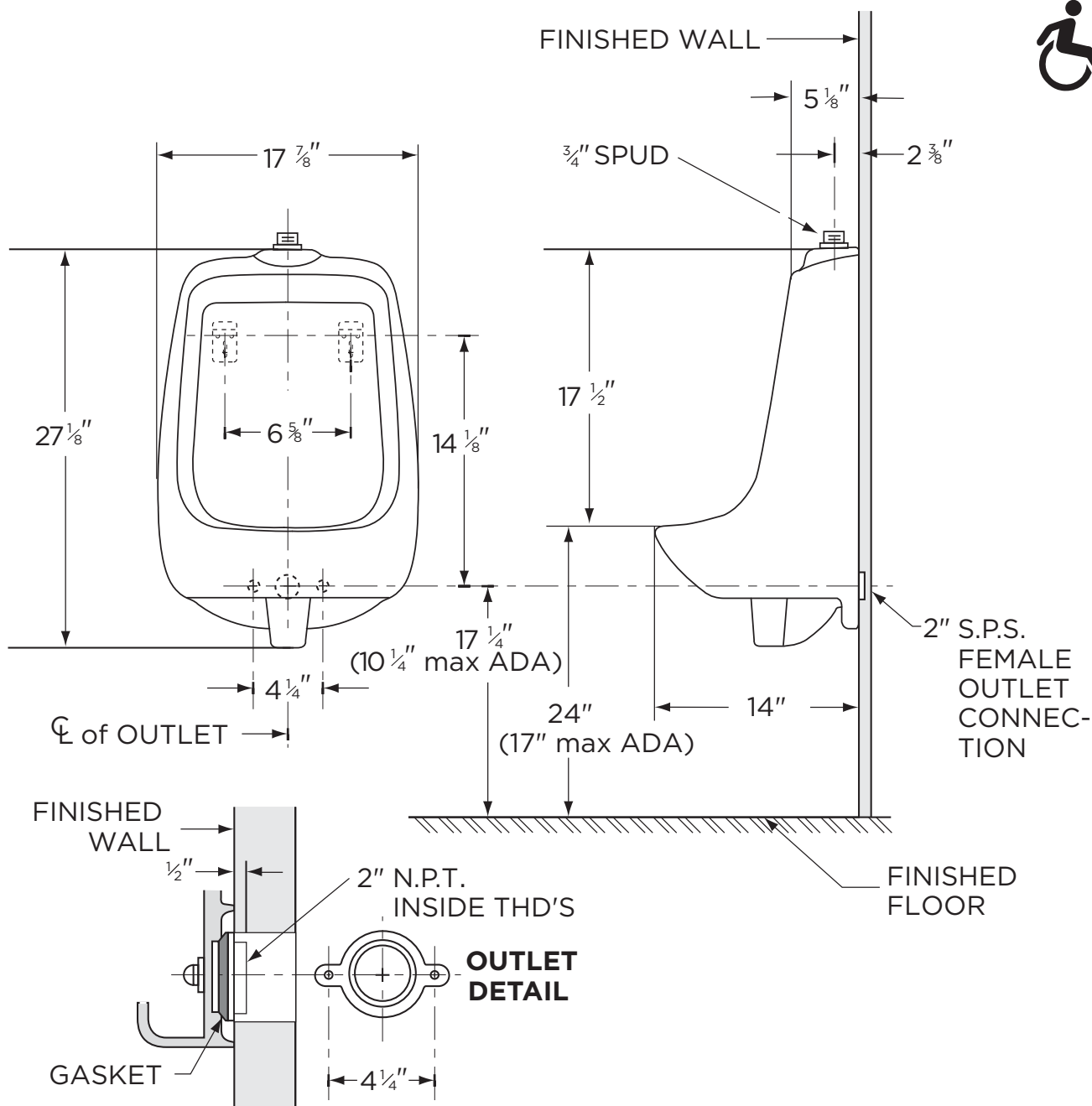
HIGH EFFICIENCY URINAL

**HEU**



[www.gerberonline.com](http://www.gerberonline.com)

Job Name	
Date	
Model Specified	
Quantity	
Customer	
Contractor	
Architect/engineer	



NOTES:

All dimensions are in inches. Use flush valve MFR'S recommended rough-in.

Recommended static water pressure for plumbing fixtures is 20-80 psi static per ANSI standards A112.19.2 Appendix B.

Illustrations may not be drawn to scale.

PLUMBERS NOTE:

Provide suitable reinforcement for all wall supports.

IMPORTANT:

Dimensions of fixtures are nominal and may vary within the range of tolerances established by ASME Standard A 112.19.2. THIS FIXTURE QUALIFIES ACCORDING TO ASME TEST PROCEDURES AS A HIGH-EFFICIENCY URINAL WITH AN AVERAGE CONSUMPTION OF 0.5 gpf (1.9 Lpf) OR LESS.