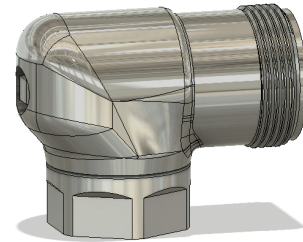


Prior to Installation

TOOLS REQUIRED FOR TRUSTOP INSTALLATION:

- A) Flat-jawed Adjustable Pipe Wrench (Recommended: E110 by Rigid)
- B) 9/32" Sillcock Key (a.k.a Shut-off Valve Wrench or Combo Key)

WARNING: Never use any tool with teeth



TruStop Installation & Adjustment

Install the TruStop to the supply pipe per industry standards. See the Valve instructions for further details.

After any installation or future service, the control stop will need to be readjusted to meet the proper flow rate for cleansing of the fixture. To open the TruStop, a standard 9/32" combo key (a.k.a sillcock key) is required. Insert the combo key into the back of TruStop. A 1/4 turn in a COUNTERCLOCKWISE direction will open the stop fully.

Note: For water closets, the fully open positions is recommended, though every fixture is different. Adjust the TruStop after each flush until the rate of flow delivered properly cleanses the fixture. Less flow rate may be needed to prevent splashing.

A CLOCKWISE turn of the shutoff key will decrease the flow rate as the stop closes. A full 1/4 turn will completely close the stop.



4) Replacing the TruChek (Back Check)

- 1) Shut water off to TruStop - With a 1/4 turn CLOCKWISE
- 2) Hit handle for a manual valve or activate sensor for a hands-free valve
(This vacates water from the flush valve and relieves pressure.)
- 3) Loosen coupling nut and separate flush valve from TruStop
- 4) Using an Allen key or similar style tool, insert the Allen key into the
and TruStop push past rubber umbrella valve.
- 5) Turn Allen key and slowly and firmly remove the TruChek.
- 6) Insert the new TruCheck into TruStop
- 7) Push slowly, evenly and firmly until it is all the way in.
- 8) Reconnect the flush valve.
- 9) Open stop with a COUNTERCLOCKWISE turn and adjust as described above.



TruChek
(1015A)

Maintenance and Cleaning

The TruStop has very few moving parts and so wear over time is not a factor generally. Rubber parts will deteriorate over time. As part of good maintenance, it is recommend to check the condition of TruChek every 5 years and replace as needed.

In order to extend the life of the chrome finish on your TruStop NEVER use harsh or abrasive chemicals to clean it. Use only mild soap and water applied with a soft cloth. Do not use pipe dope or other sealants on any valve threads or couplings except for the inlet threads.