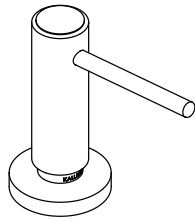
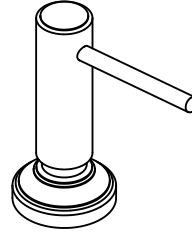


INSTALLATION INSTRUCTIONS



P25215



P25015

INSTALLATION INSTRUCTIONS

THANK YOU FOR CHOOSING KALLISTA

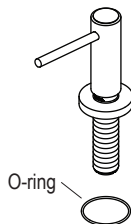
We appreciate your commitment to Kallista quality products. Please take a moment to review this manual before you install your Kallista product. If you encounter any installation or performance problems, please do not hesitate to contact us at the phone number listed at the bottom of the page.

BEFORE YOU BEGIN

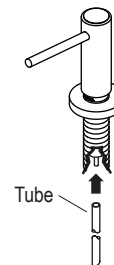
- Observe all local plumbing and building codes.
- The appearance of the pump assembly may differ from the illustrations. The installation instructions still apply.
- For installation on a thin deck, slide the washer (provided) onto the shank before tightening the nut onto the shank.
- Kallista reserves the right to make revisions in the design of faucets without notice, as specified in the Price Book.

INSTALLATION

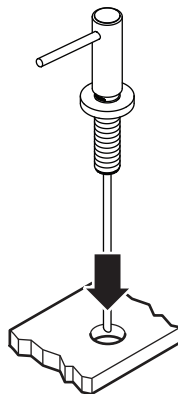
1. Slide gasket onto underside of escutcheon.



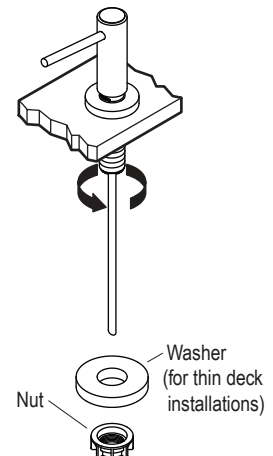
2. Insert blunt end of tube into pump assembly.



3. Insert pump assembly through hole.



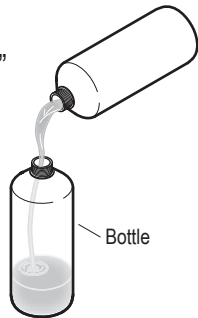
4. Tighten nut onto shank.



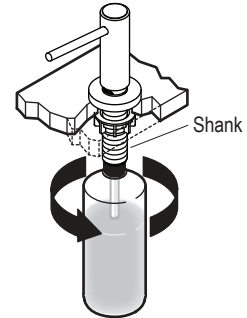
INSTALLATION INSTRUCTIONS

INSTALLATION

- 5.** Fill bottle with soap/lotion.
NOTE: Only fill bottle to 1-1/2" from top to prevent overflow.



- 6.** Thread bottle into shank until handtight.



- 7.** To re-fill bottle with soap/lotion, lift up on pump assembly.
NOTE: Only fill bottle to 1-1/2" from top to prevent overflow.

