



# INSTALLATION

**PIONEER INDUSTRIES, INC.**  
 3325 S. Garfield Ave.  
 Commerce, CA 90040  
 (800) 338-9468  
 www.pioneerind.com

### Tools:



Adjustable Wrench



Plumbers Putty



Teflon Tape



Rags

**Model Number:** 2LG160(B), 2LG160H, 2LG161(B),  
 2LG161H, 2LG162

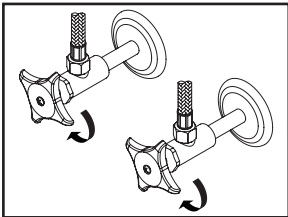


### Warnings and Notes:

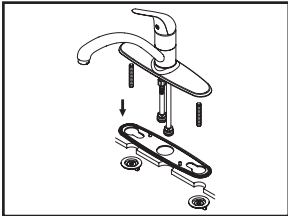
Check with local plumbing code requirements before installation.  
 This product should be installed by a local listed plumber.  
**Do not use plumbers putty on threads.**

### Installation Steps:

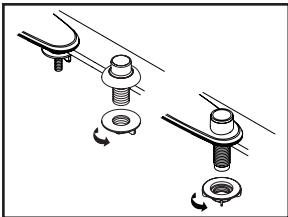
Single Handle Kitchen Faucet



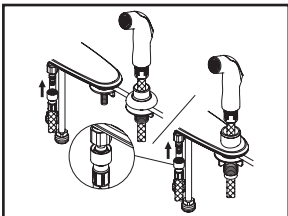
(1) Shut off the water supply. Remove old faucet. Clean mounting surface in preparation for new faucet.



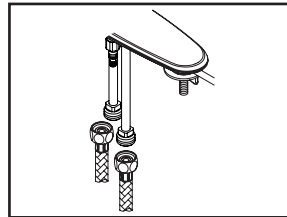
(2) Apply adequate plumbers putty along the boundary of base gasket. Thread mounting bolts to the bottom of faucet. Align faucet with mounting holes and place faucet on the sink, thread locknut onto mounting bolts from underneath the sink, hand tighten locknuts. Go to step (5) if faucet is without side spray.



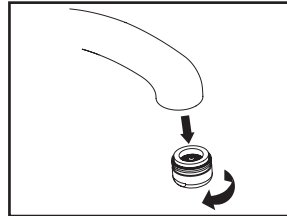
(3) Place side spray holder on mounting hole. Tighten locknut from underneath the sink to secure the side spray holder.



(4) Guide the side spray hose through the side spray holder. Insert the side spray hose quick connect adapter into faucet outlet end, push until a "click" is heard. Pull side spray hose downward to test engagement.



(5) When using stainless steel braided faucet supply hoses; one end of the supply hose is required to have a 1/2" female IPS connection. The other end of this supply hose must match the thread on the water supply valve under your sink. Once you've identified the required size, carefully follow the manufacturer's installation instructions for each hose.

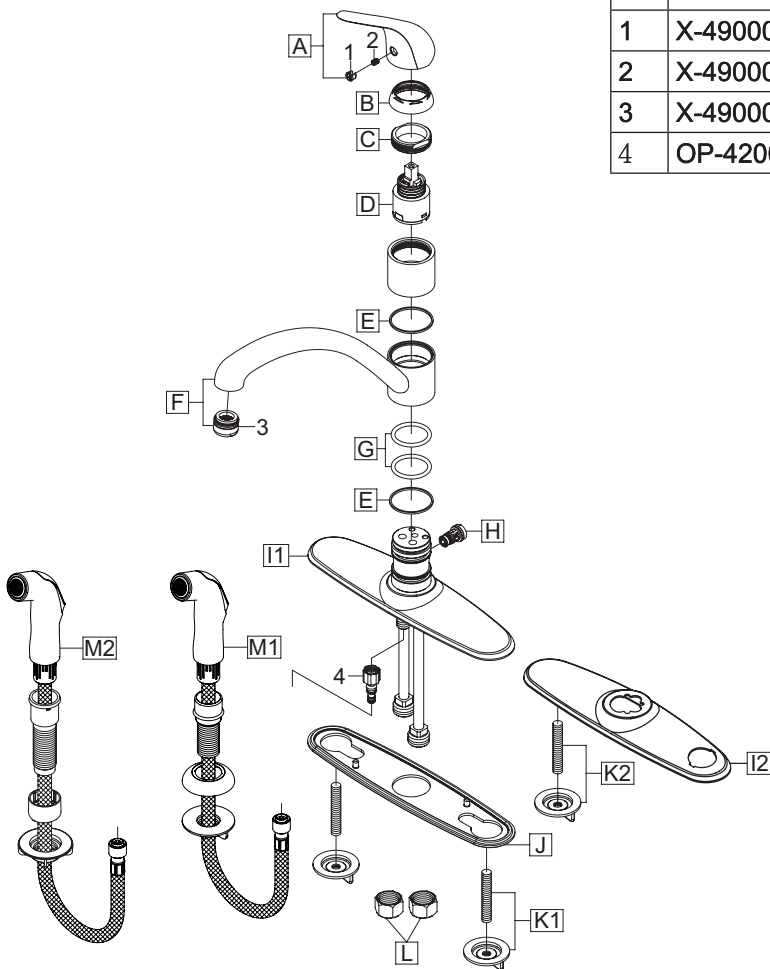


(6) Important: After installation is complete, remove the aerator. Turn on the water and allow both hot and cold water to run for at least one minute each. While water is running, check for leaks. Turn off the water and replace the aerator when finished.

# Exploded Drawing :

\* Note: Please specify finish/color when ordering.

	ITEM #	DESCRIPTION
A	X-1200001*	Lever Handle
B	X-4200001*	Cap
C	X-4200002	Retainer Nut
D	X-3900001	Ceramic Disc Cartridge
E	X-4200003	Spout Gasket
F	X-2200001*	Spout
G	X-4200004	O-Ring
H	X-4200007	Diverter Piston (For 2LG161(H), 2LG162)
I1	X-4200005*	Deck Plate (For 2LG160(H), 2LG161(H))
I2	X-4200010*	Deck Plate (For 2LG162)
J	X-4200006	Base Plate
K1	X-5200006	Mounting Kit (For 2LG160(H), 2LG161(H))
K2	X-5200002	Mounting Kit (For 2LG162)
L	X-4900004	Supply Nut (For 2LG16X)
M1	OP-420077*	Side Spray Assembly (For 2LG161(H))
M2	X-4200201*	Side Spray Assembly (For 2LG162)
1	X-4900001	Button
2	X-4900002	Allen Screw
3	X-4900081*	1.5 GPM Aerator
4	OP-420083	Quick Connect Adapter



For more care information or trouble shooting inquiries about your Pioneer product, please call:  
**Pioneer Industries, Inc.** (800) 338-9468  
 Monday-Friday 8 AM to 8 PM EST (5 AM to 5 PM PST)  
[www.pioneerind.com](http://www.pioneerind.com)