



Health and Safety Warning:

Ceramic fiber products are suspected of causing cancer by inhalation. All ceramic fiber products have a hazard communication warning label and a prop 65 warning for airborne fiber inhalation. You should minimize exposure to airborne fibers. When handling ceramic fiber we recommend using particulate respirator mask (N95), protective gloves, safety glasses and long sleeve clothing. For complete safety information consult the SDS sheet. <https://www.lynnmfg.com/documentation/>



Before you start work:

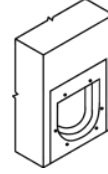
1. Read all instructions and check the kit number before starting work. **See Note A.**
2. Turn off service switch on boiler and all other electrical disconnect switches.
3. Close fuel supply valve(s) and disconnect fuel line from the burner.

Removal:

4. Turn off service switch on boiler and all other electrical switches.
5. Turn off fuel supply valve(s) and disconnect fuel line from burner.
6. Remove oil burner from boiler.
7. Remove lower jacket panel from front of boiler.
8. Cut and carefully remove exposed fiberglass insulation. NOTE: Save the insulation for reassembly use.
9. Remove the six nuts from the burner mounting plate.
10. Remove the burner mounting plate. This may need to be pried off since a silicone compound is used as a sealant.
11. Remove the burner mounting plate insulation and chamber front. These two pieces may be cemented together.
12. Remove target wall and Kaowool floor blanket.
13. Scrape and wire brush all internal surfaces to remove any remaining cement and chamber or blanket material.
14. Scrape and remove any old silicone sealant from the parting surfaces of the boiler front and the inside of the burner mounting plate.

Installation:

15. Plate the 32" wide edge of the Kaowool blanket supplied against the back wall of the boiler. Cut off the excess that extends beyond the front lip of the boiler. **See Note C.**
16. Apply a generous amount of refractory cement to the sides of the boiler in the area where the top edges of the blanket will make contact. Press blanket into position. NOTE: The blanket must be installed before the target wall and chamber.
17. Apply a thick layer of refractory cement to the rear wall of the boiler where the target wall will make contact. Carefully place the target wall into position making sure it is contacting the back wall. The bottom curved edge should be pressing against the Kaowool blanket. **See Note B.**
18. Very carefully install the chamber front without disturbing the blanket. Chamber must fit inside the top boiler lip, and on top of the blanket. After getting it into position, pull the chamber front forward so it is making contact with the inside of the top lip. **See Note B.**
19. Apply refractory cement to the smooth side of the burner plate insulation, then carefully place this side against the chamber front. Make sure the burner holes are lined up and press together. Be careful not to move the chamber front and blanket.
20. Apply a bead of silicone sealant to the clean inside surface of the cast iron burner mounting plate. The bead should be applied on the outside of the raised lip where it will contact the boiler front. Place on boiler studs and attach with nuts.
21. Use remaining silicone compound to reattach the fiberglass insulation to the front of the boiler.
22. Reinstall lower front boiler jacket.
23. Reinstall oil burner. Be careful not to disturb chamber.
24. Reconnect fuel line and electric wiring. Turn on valve(s) & switch(es).
25. Fire the burner. **See Note E.**



TARGET WALL

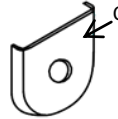


CUT LENGTH



KAOWOOL BLANKET

CHAMBER FRONT



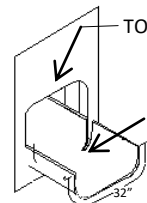
BURNER MOUNTING PLATE INSULATION



BURNER MOUNTING PLATE



TOP LIP
CUT OFF EXCESS BLANKET



Note A: Correct Kit

Please check this is the correct kit for your make & model boiler by checking the box label or consulting our Ready Reference.

Note B: Fitting Ceramic Fiber Pieces

Many of the rigid ceramic fiber pieces are designed to be a firm press fit. To avoid breakage, press carefully and gradually. The fit may need to be adjusted by sanding or filing until a snug press fit is achieved.

Note C: Installing the Floor Blanket

The blanket provided with this kit is sized for the largest possible boiler and will normally have to be cut to size. The blanket must cover the entire bottom of the chamber. The blanket should be glued in place by covering the floor with waterglass before installing the blanket. Use the entire 4oz bottle that is provided and spread with a chip brush or rag.

Note E: Initial Firing

Fire the burner for 15 minutes to allow ceramic fiber insulation to "cure". It is normal when first fired for some smoke and a slight odor to occur. Combustion test must be performed after curing process.

Application, Installation and Use Warning:

In applications including; boilers, furnaces, wood stoves, wood inserts, fireplaces, heating devices, and other appliances, parts must be used consistently with original equipment manufacturers specifications, design, function and operation.

Improper installation or use of this product could result in a fire, smoke inhalation or carbon monoxide poisoning. Products should be installed by a licensed and certified technician in compliance with all national, state and local codes. Products should be inspected annually by a licensed and certified technician for wear, brittleness, cracking or crumbling, and replaced as necessary. Lynn Manufacturing, Inc. recommends installers certified by NFI, CSIA or NORA.

Never work on a piece of equipment or touch the fibrous product when it is hot, as the product may show no visible signs of heat from glowing or smoking.

Lynn Manufacturing, Inc offers hundreds of products with many applications. Determining whether the product is a fit for the particular purpose and suitable for an application is the sole responsibility of the purchaser/installer.

In no event shall Lynn Manufacturing, Inc be liable for any damages to property or life arising from or connected with the use of this product.