

LFFBV-3-Press-XLC Ball Valve

For water service

Size: 2½" - 4" (65mm – 100 mm)

⚠ WARNING



Read this Manual **BEFORE** using this equipment.
Failure to read and follow all safety and use information can result in death, serious personal injury, property damage, or damage to the equipment.
Keep this Manual for future reference.



Installation Instructions

The LFFBV-3-Press XLC ball valve is designed for use with types K, L, and M Hard Copper Tubing in 2½" – 4" (65mm – 100mm).

1. Square cut copper tubing at right angle using a displacement type cutter.
2. If mounted in a vice, keep end of tubing a minimum of 4" away from the contact area of the vise, to prevent damage to the tubing in the press area.
3. To prevent cutting the O-ring, carefully deburr the internal and external surface of the tube end.
4. Mark the correct insertion depth on the tube. Refer to LFFBV-Press XLC Insertion Depth Chart below for insertion depth. Incorrect insertion depth can result in failed press connection.
5. Check seal and grip ring for correct fit. Do not use oil or lubricant on the valve fitting or tube which could degrade the EPDM seal.
6. Slowly rotate the valve while sliding the valve into the tubing. Insert to the fitting stop. The end of the tubing must be fully inserted and contact the stop.
7. LFFBV-3-Press XLC valve connections must be performed with XLC rings and pressing tool.

NOTICE

Use of XL rings and/or XL pressing tool (for bronze fittings) will result in an improper connection.

8. Open XLC ring and place at right angles on the valve. XLC ring must be placed on the fitting bead. Check insertion depth mark on the tubing before pressing.
9. Assemble the pressing tool to the manufacturer's recommendation. Connect XLC pressing tool to the XLC ring.
10. To start the press connection process, hold the trigger while the press tool engages the XLC ring and completes the press joint. Be careful to keep extremities and other objects away from pressing tool or XLC ring during the pressing as injury or failed press joint could occur.

NOTICE

After completion of the press connection, remove the press tool from the XLC ring and then remove the XLC ring from the valve.

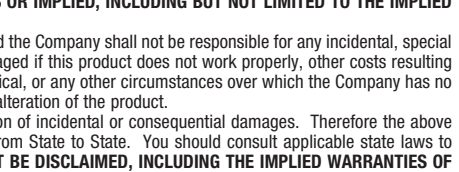
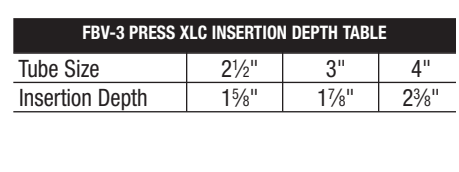
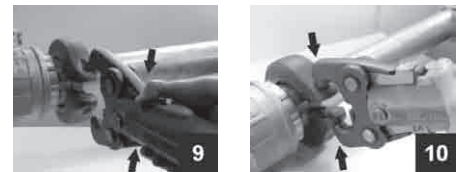
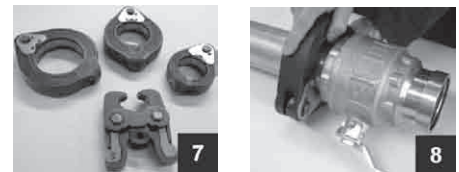
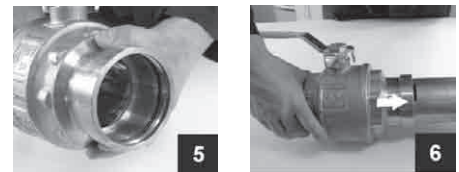
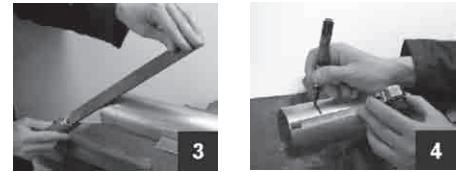
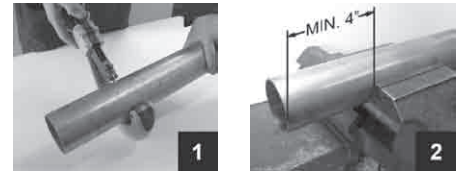
Pressure testing to be performed in accordance with the local codes and fitting manufacturer's instructions.

Limited Warranty: Watts Regulator Co. (the "Company") warrants each product to be free from defects in material and workmanship under normal usage for a period of one year from the date of original shipment. In the event of such defects within the warranty period, the Company will, at its option, replace or recondition the product without charge.

THE WARRANTY SET FORTH HEREIN IS GIVEN EXPRESSLY AND IS THE ONLY WARRANTY GIVEN BY THE COMPANY WITH RESPECT TO THE PRODUCT. THE COMPANY MAKES NO OTHER WARRANTIES, EXPRESS OR IMPLIED. THE COMPANY HEREBY SPECIFICALLY DISCLAIMS ALL OTHER WARRANTIES, EXPRESS OR IMPLIED, INCLUDING BUT NOT LIMITED TO THE IMPLIED WARRANTIES OF MERCHANTABILITY AND FITNESS FOR A PARTICULAR PURPOSE.

The remedy described in the first paragraph of this warranty shall constitute the sole and exclusive remedy for breach of warranty, and the Company shall not be responsible for any incidental, special or consequential damages, including without limitation, lost profits or the cost of repairing or replacing other property which is damaged if this product does not work properly, other costs resulting from labor charges, delays, vandalism, negligence, fouling caused by foreign material, damage from adverse water conditions, chemical, or any other circumstances over which the Company has no control. This warranty shall be invalidated by any abuse, misuse, misapplication, improper installation or improper maintenance or alteration of the product.

Some States do not allow limitations on how long an implied warranty lasts, and some States do not allow the exclusion or limitation of incidental or consequential damages. Therefore the above limitations may not apply to you. This Limited Warranty gives you specific legal rights, and you may have other rights that vary from State to State. You should consult applicable state laws to determine your rights. **SO FAR AS IS CONSISTENT WITH APPLICABLE STATE LAW, ANY IMPLIED WARRANTIES THAT MAY NOT BE DISCLAIMED, INCLUDING THE IMPLIED WARRANTIES OF MERCHANTABILITY AND FITNESS FOR A PARTICULAR PURPOSE, ARE LIMITED IN DURATION TO ONE YEAR FROM THE DATE OF ORIGINAL SHIPMENT.**



FBV-3 PRESS XLC INSERTION DEPTH TABLE

Tube Size	2½"	3"	4"
Insertion Depth	1½"	17⁄8"	2¾"

WARNING: This product contains chemicals known to the State of California to cause cancer and birth defects or other reproductive harm.
For more information: www.watts.com/prop65



USA: Tel: (978) 688-1811 • Fax: (978) 794-1848 • www.watts.com

Canada: Tel: (905) 332-4090 • Fax: (905) 332-7068 • www.watts.ca

IS-FBV-3Press-XLC 1323

EDP# 2915070



A Watts Water Technologies Company

© 2013 Watts