

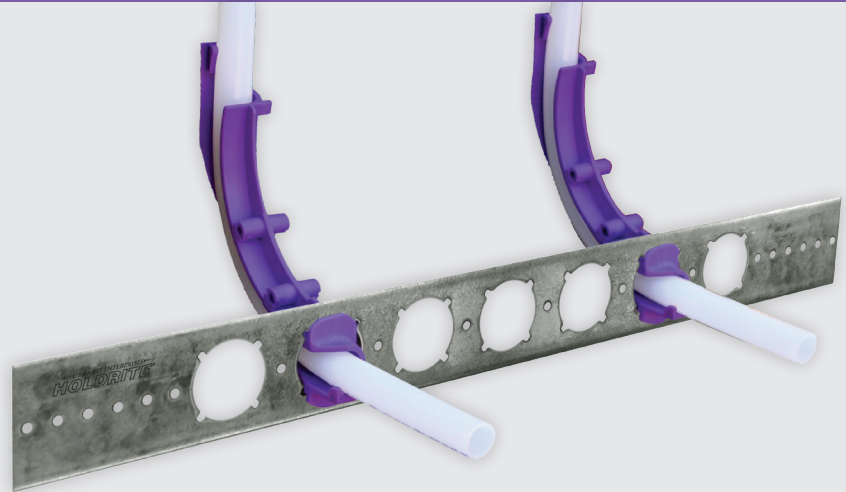


**HOLDRITE**  
CONVERTING MAKESHIFT METHODS INTO ENGINEERED SOLUTIONS™

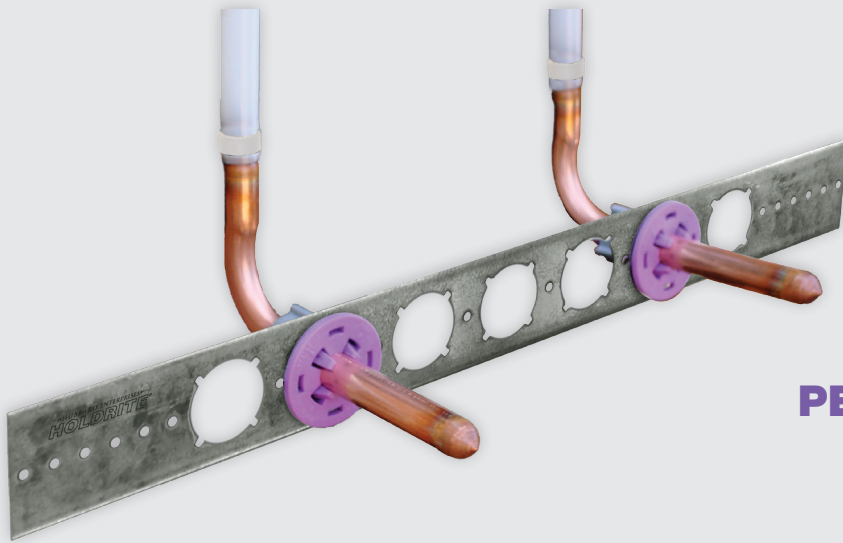
**PEXRITE**®

# The Torchless Installation™

**PEX STUB-OUT**



**PICK YOUR STUB-OUT METHOD**



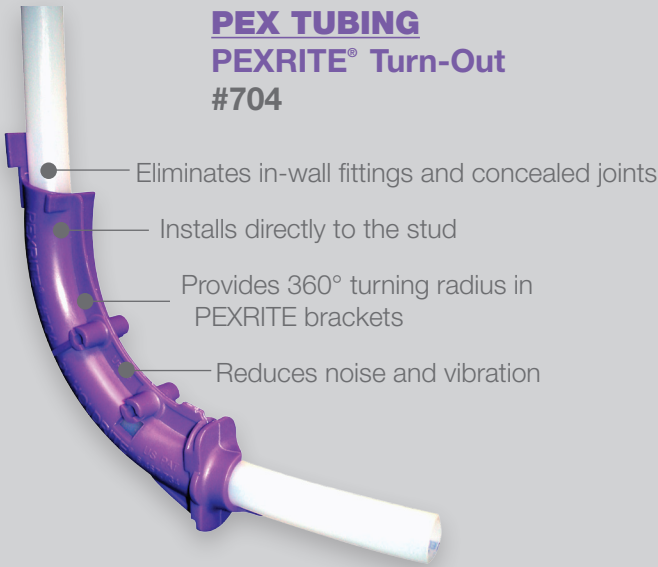
**PEX TO COPPER STUB-OUT**



Visit [www.holdrite.com](http://www.holdrite.com) to view PEXRITE® installation videos, technical information, and list pricing.

# Pick Your Stub-Out Method

## PEX TUBING PEXRITE® Turn-Out #704



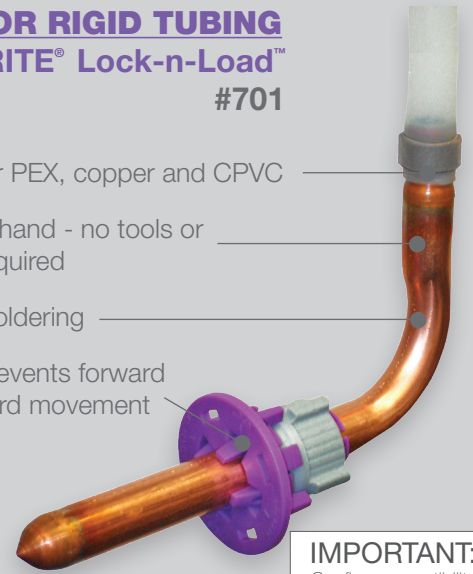
## COPPER OR RIGID TUBING PEXRITE® Lock-n-Load™ #701

Designed for PEX, copper and CPVC

Tightens by hand - no tools or hardware required

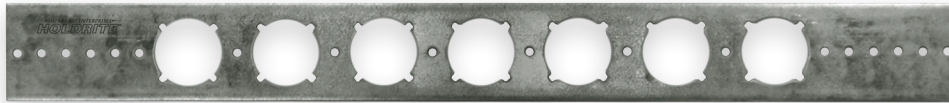
Eliminates soldering

Secure fit prevents forward and backward movement



**IMPORTANT:**  
Confirm compatibility of copper ells with PEX tubing manufacturer.

PEXRITE® Supports Integrate Directly with PEXRITE® Brackets Only



#103-18

## PEXRITE® Turn-out #704 Installation Instructions

**1** Install PEXRITE bracket to studs.



**2** Insert #704 into bracket from the front.



**3** Position #704 until bracket fits into groove, then rotate into place.



**4** Insert PEX tube at 45° angle and set stub-out length.



**5** Bend tube forward and snap into #704.

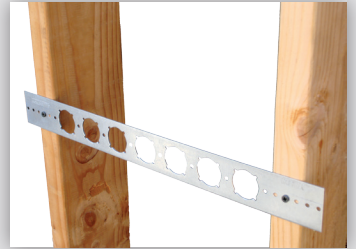


**6** Complete! No concealed joint in the wall.



## PEXRITE® Lock-n-Load™ Installation Instructions

**1** Install PEXRITE bracket to studs.



**4** Load tubing through #701 from back.





## Additional Application Solutions

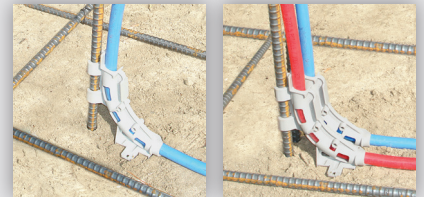
### PEXRITE® #705

- 3/8" and 1/2" CTS PEX tubing Sink/lavatory and toilet stub-out
- Overhead 90° turn
- In-slab turn-out from decking into wall



### PEXRITE® Pop-Up™ #706

- Single run pop-up for 3/8" and 1/2" CTS PEX tubing
- Ideal for radiant heating applications
- Multi-run versatility for manifolds with interlocking feet



### PEXRITE® Pop-Up™ #707

- Single run pop-up for up to 7/8" O.D. PEX tubing, soft copper and flexible conduit
- In-slab installation at ground-work with rebar or wood decking
- Multi-run versatility for manifolds with interlocking feet



### PEXRITE® Pop-Up™ #708 and #708-E

- Double run pop-up for in-slab flexible tubing support
- Multi-run versatility for manifolds with interlocking feet
- #708 design allows for side-entry of tubing
- #708-E design allows for easy zip tie installation of flexible or rigid tubing
- Mounts to wood form decking or slab-on-grade with rebar



### PEXRITE® #710, #711, #712

- Plastic nylon bend support
- Provides rigid 90° bend ideal for 1/2", 3/4" and 1" PEX tubing
- Compatible with all PEX tubing manufacturers



## In-Slab #701 Installation Instructions

- 2** Insert #701 into bracket from the front.



- 3** Lock #701 into bracket with thumbs.



- 5** Push and twist back nut by hand, until tight.



- 6** Complete! Secures stub-out with no solder.



## PEXRITE® Pop-Up™ Installation Instructions





**HOLDRITE**<sup>®</sup>  
CONVERTING MAKESHIFT METHODS INTO ENGINEERED SOLUTIONS™

**PEXRITE**<sup>®</sup>  
THE TORCHLESS INSTALLATION™

### PIPE SUPPORT BRACKETS AND STUB-OUT SUPPORTS

Model #	Description	Box Quantity
103-18	Galvanized bracket with 1 <sup>3</sup> / <sub>8</sub> " keyed holes, on 2" centers, 20" long.	50
103-26	Galvanized bracket with 1 <sup>3</sup> / <sub>8</sub> " keyed holes, on 2" centers, 26" long.	50
709	Galvanized bracket with 1 <sup>3</sup> / <sub>8</sub> " keyed holes, 7 <sup>1</sup> / <sub>2</sub> " x 2".	50
709-L	Galvanized "L" bracket with 1 <sup>3</sup> / <sub>8</sub> " keyed holes, 4 <sup>1</sup> / <sub>4</sub> " x 3 <sup>1</sup> / <sub>4</sub> " x 2".	50
709-EXT	Galvanized bracket with 1 <sup>3</sup> / <sub>8</sub> " keyed holes and up to 8" center line off floor, 9"x 2 <sup>1</sup> / <sub>8</sub> " x 2".	50
721	Galvanized bracket 3 <sup>3</sup> / <sub>8</sub> " x 2 <sup>3</sup> / <sub>4</sub> " with 1 <sup>3</sup> / <sub>8</sub> " keyed hole. Integrates with the HOLDRITE STOUT BRACKET <sup>®</sup> or mounts directly to stud.	50
110-R	Galvanized bracket for island lavatory/sink, supports 4" and 8" centers, 2 <sup>1</sup> / <sub>8</sub> " x 1 <sup>7</sup> / <sub>8</sub> ".	50
SB1S	Galvanized telescoping bracket, 10" - 18", supports PEX, Copper and CPVC.	50
SB2S	Galvanized telescoping bracket, 13" - 25", supports PEX, Copper and CPVC.	50

### PEX STUB-OUTS

Model #	Description	Box Quantity
704	Turn-out supports 3/8" & 1/2" CTS PEX tubing. No tools required. Temp. range: -10° F to +180° F.	100
705	Turn-out supports 3/8" & 1/2" CTS PEX tubing. Mount to block of wood. Sink/lavatory and toilet stub-out support & overhead 90° turns. Temp. range: -10° F to +190° F.	50
710	90° overhead bend plastic nylon support for 1/2" CTS PEX tubing.	50
711	90° overhead bend plastic nylon support for 3/4" CTS PEX tubing.	50
712	90° overhead bend plastic nylon support for 1" CTS PEX tubing.	25

### PEX-TO-COPPER STUB-OUTS

Model #	Description	Box Quantity
701	Stub-out clamp supports 1/2" CTS PEX, Copper & CPVC tubing. No tools required. Temperature range: -10° F to +140° F	50
103-18-701	20" flat, galvanized bracket & 1/2" CTS #701 stub out clamps.	50 brackets/ 100 clamps
103-26-701	26" flat, galvanized bracket & 1/2" CTS #701 stub out clamps.	50 brackets/ 100 clamps

### PEX POP-UP SUPPORTS

Model #	Description	Box Quantity
706	Single run 3/8" & 1/2" CTS Pop-up for PEX. Ideal for in-slab and radiant heating. Temp. range: -10° F to +190° F.	50
707	Single run Pop-up for PEX, soft copper and flexible conduit. Tube sizes up to 7/8" O.D. Temp. range: -10° F to +190° F.	25
708	Double run Pop-up for PEX, soft copper and flexible conduit. Tube sizes up to 1 1/8" O.D. Temp. range: -10° F to +190° F.	15
708-E	Double run Pop-up for PEX, flexible conduit (smurf tubing), & rigid conduit 90s. Tube sizes up to 2 1/2" IPS. Temp. range: -10° F to +190° F.	15

### INSERTS/CLAMPS

Model #	Description	Box Quantity
404-R, 405-R, 406-R	1/2", 3/4" and 1" CTS Fire Retardant inserts. Meets UL94 V-2.	100

Visit [www.holdrite.com](http://www.holdrite.com) to view PEXRITE<sup>®</sup> installation videos, technical information, and list pricing or call (800) 321-0316.