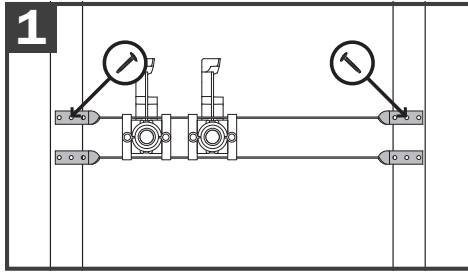
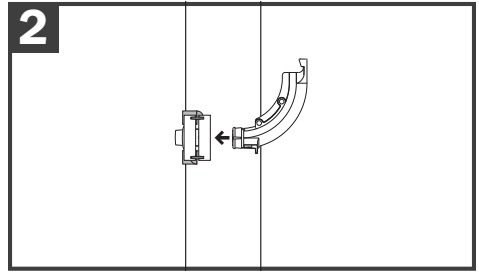


# StrongArm™ with Plastic Bend Support

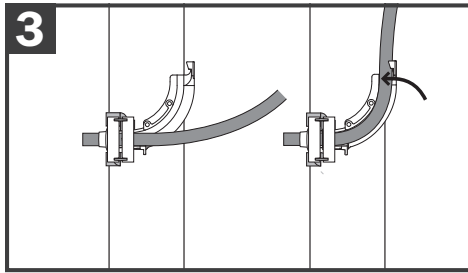
## Installation Instructions



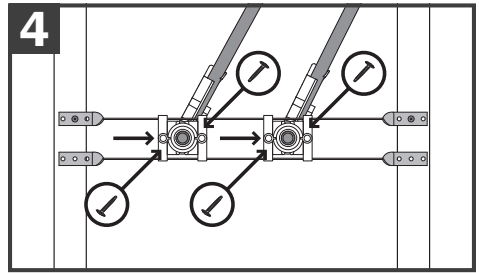
**1** Determine stub out height. Secure top bracket to face of stud bay.



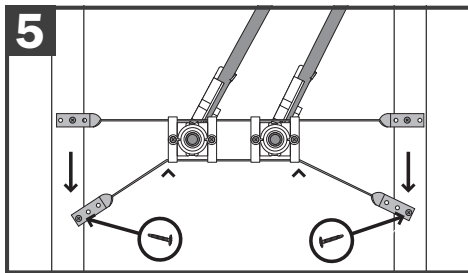
**2** Push the plastic bend supports into the back of each white LockBlock until it clicks in place



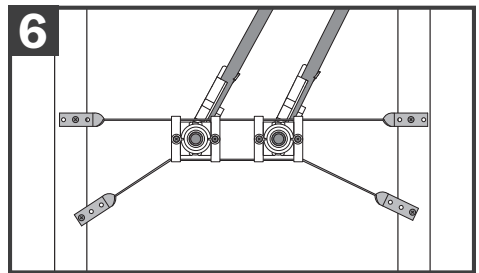
**3** Working from the back of the bracket, insert flexible tube through the nose of the front block then bend tube and capture in place at tail end of elbow.



**4** Slide elbow/block assembly to desired stub out location. Insert two screws into each block and tighten. Tightening screws prevents movement of blocks and prevents elbow from swiveling.



**5** As close as possible to each block, bend the bottom bracket downward. Secure each side of bottom bracket to stud.



**6** Installation complete.

Patent # 8,061,390 | Patent # 8,141,831

#IS-525-PB 05/19

Supply

Drainage

Support

Specialties

[www.siouxchief.com](http://www.siouxchief.com)

14940 Thunderbird Road  
Kansas City, MO 64147  
P 1.800.821.3944  
F 1.800.758.5950

