



Mitsubishi Package Air-Conditioner Optional Component Instructions on Installing Concentrated Drain Pan

〈Outdoor unit〉
PAC-SG63DP-E
PAC-SG64DP-E

SAFETY PRECAUTIONS

- Read this "Safety Precautions" thoroughly and install the drain pan securely.
- Be sure to observe the precautions given here: They are critical for safety.
- Precautions are classified using the following symbols depending on extent and type of danger by erroneous handling:

 WARNING	Erroneous handling can cause death or serious injury.
 CAUTION	Erroneous handling can cause personal injury or damage.

- After installation, make a trial run to ensure that no fault occurs, and ask the customer to keep this installation sheet with instruction manual. Also ask the customer to pass them to new user if user changes.

⚠ WARNING

Ask the dealer or specialist to install the pan.

- If you install the drain pan incorrectly by yourself, some components could cause water leak, electric shock, fire, etc.

Securely install the drain pan, referring to this installation sheet.

- Incomplete installation could cause water leak, electric shock, fire, etc., with some components.

Before performing installation (moving) and electrical construction:

⚠ CAUTION

Do not place polyethylene bags in reach of children.

- Putting over the head will block breathing passages, which could result in suffocation.

If wiring for power supply is necessary, use only specified wires that comply with current capacity.

- Using other wires could cause leak, heat generation, fire, etc.

If refrigerant piping is necessary, securely execute insulation so that condensation does not occur.

- Incomplete insulation will cause condensation on surface of pipe, etc and moisture will drip, which could wet ceiling, floor or other areas.

If drain piping is necessary, lay piping for secure drain, referring to instruction manual, and maintain the temperature to prevent condensation.

- Incomplete piping will cause water leak, which could wet ceiling, floor or household goods.

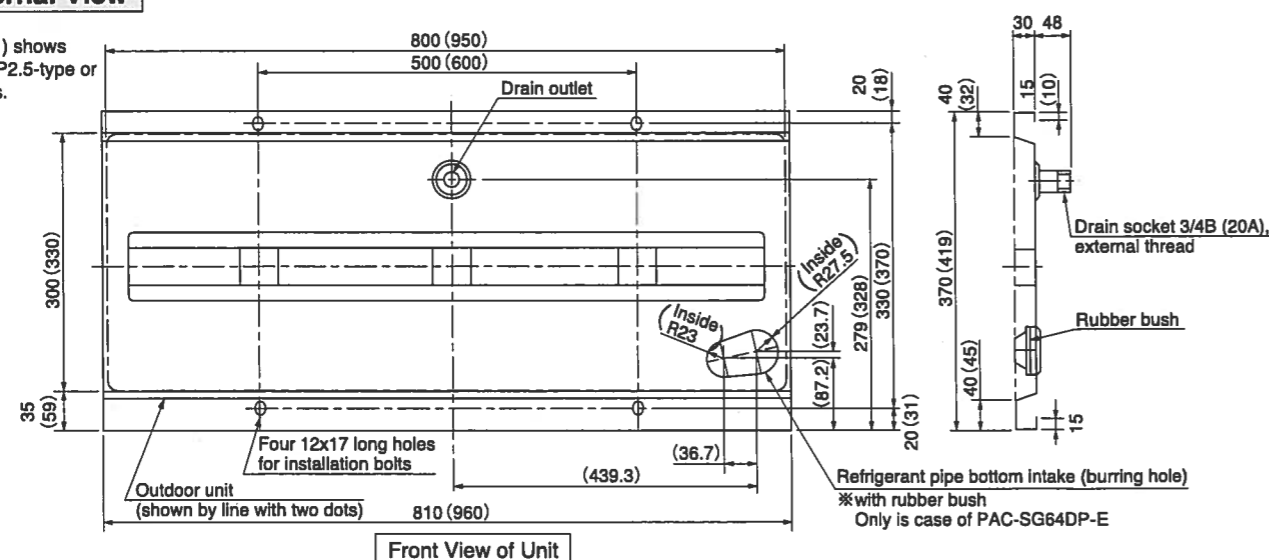
This drain pan is used to drain water when outdoor unit is installed on a frame placed in passage.

Be careful of the following when installing the drain pan:

- 1) Do not use the drain pan in a cold place. The drain pipe could freeze.
- 2) Since the drain pan is installed between the frame and the outdoor unit, the outdoor unit will be 30 mm higher.
- 3) Install the drain pan so that the drain outlet faces the rear of outdoor unit.
- 4) Tilt the drain pan slightly to the rear so that no water accumulates in the front of drain pan.

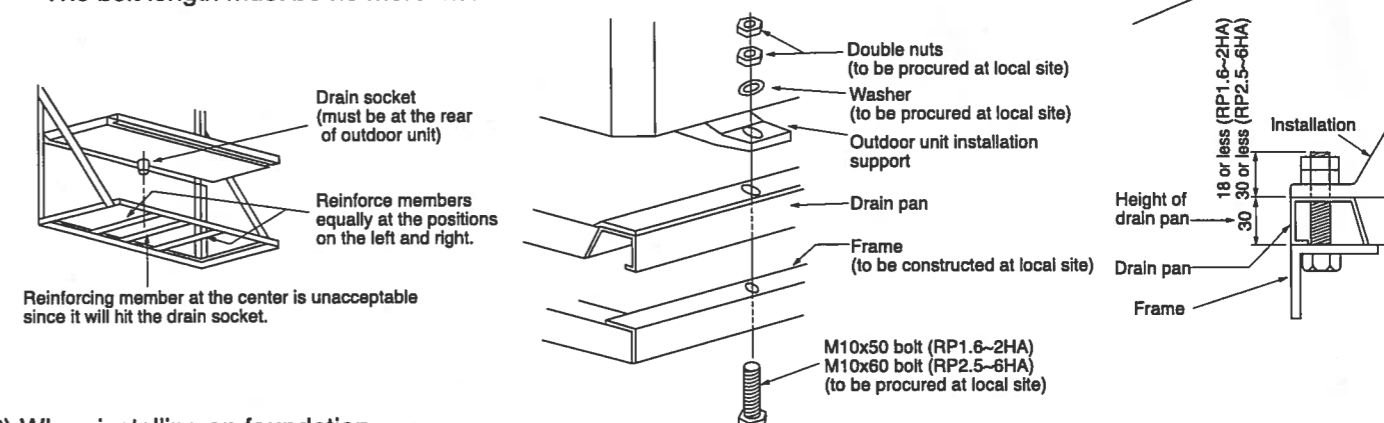
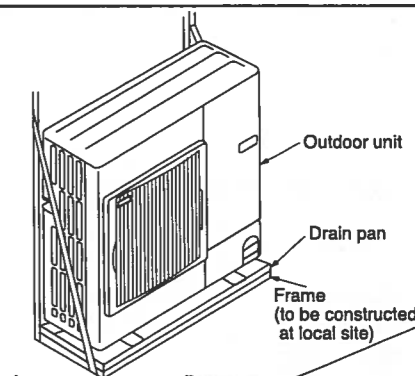
1	External View
---	----------------------

Value inside () shows the size for RP2.5-type or higher models.



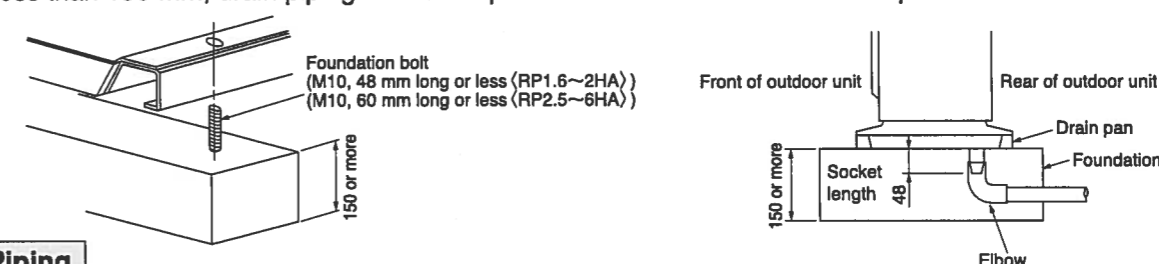
2 Installation Method

- (1) When installing on installation frame
 - 1) The installation frame must have structure and strength that can sufficiently support the outdoor unit and drain pan. Securely install the outdoor unit and drain pan so that they cannot fall or drop as a result of earthquake, strong wind, etc.
 - 2) The drain socket of drain pan is at the center in the longitudinal direction.
When constructing the installation frame, be careful that no part of the frame interferes with the socket.
 - 3) The drain pan is tightened with the outdoor unit. Punch approx. $\phi 13$ holes in the installation frame at pitches to install the outdoor unit.
 - 4) Fix the frame, drain pan and outdoor unit together to join them firmly (at the 4 points).
The bolt length must be no more than 60 mm.



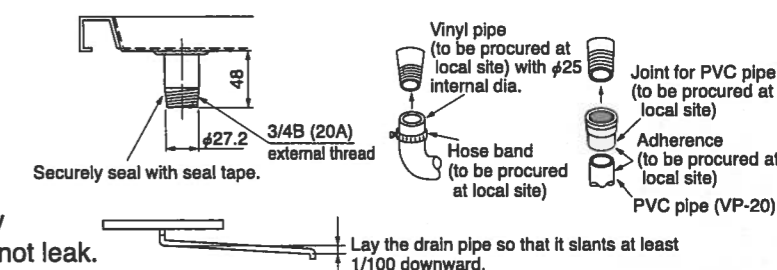
- (2) When installing on foundation

- Since concentrated drain disposal is necessary, make the foundation at least 150 mm high measured from the ground as shown in the figure below.
If it is less than 150 mm, drain piping will not be possible because the drain socket protrudes 48 mm.



3 Drain Piping

- (1) When connecting steel pipe:
Connect 3/4B internally threaded pipe.
- (2) When connecting vinyl pipe (soft):
Use a ϕ 25 mm internal dia. pipe, and fix the connected section with a hose band, etc.
- (3) When connecting PVC pipe (hard):
Use VP-20 and connect with a joint for PVC pipe.
※ In all cases, seal the socket threaded section securely with a seal tape, etc., and make sure that water does not leak.



4 Refrigerant Piping ※For PAC-SG64DP-E only

- The refrigerant pipe can be laid in from four directions: front, right, rear and bottom. When laying, be sure to perform the following:

- (1) Piping from the bottom:
Cut out the rubber bush to match the thickness of refrigerant pipe insulator. Pass the refrigerant pipe through the rubber bush and fit it into the burring hole. Seal it with adhesive that is equivalent to Cemedine 366 (to be procured at local site) to prevent water leak.

