

Water Connects Us®

## SLOAN DECK MOUNTED SOAP DISPENSER (ESD-SERIES) INSTALLATION INSTRUCTIONS



ESD-500



ESD-600



ESD-700



ESD-800



ESD-1500



ESD-410  
CLARK STREET



ESD-420  
RUSH STREET



ESD-2000



ESD-2100

### Touchfree Counter Mounted System Installation Guide

If there is a dispenser currently installed

- Remove the existing unit, both the above and below counter assemblies
- Clean the counter area where the previous dispenser was located
- Verify the size of the existing counter hole is 15/16" to 1-1/4" in diameter

If there is no hole in the counter

- Maximum counter thickness is 2"
- Prior to drilling, examine below the counter to ensure adequate clearance for the new unit
- Drill a 1" diameter hole in the counter top
- The hole can be drilled to either the right or left of the faucet, ensuring adequate clearance for the below counter assembly
- Clean the counter area where the new hole is located

### Prior To Installation

New Soap Dispenser Installation:

- Ensure that dispenser does not interfere with anything above or below the lavatory/counter top area
- Drill a 1" diameter hole in counter top
- Clean area around hole

### To Order Replacement Soap Cartridges

800.321.9647

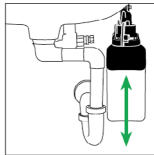
GOJO Industries

Refills are also available through your local plumbing or janitorial supply distributor.

When the soap bottle is empty, a new bottle must be used. The bottle furnished with the unit is not designed to be refilled. Altering the bottle and refilling it with soap will void the warranty of the product.



Improper installation of the Counter Mounted Dispenser could result in breakage.



Proper installation allows the unit to vertically hang beneath the sink.

Dispenser must hang freely underneath the sink.

### SLOAN LIMITED WARRANTY SUMMARY

Sloan Valve Company ("Sloan"), warrants its products against defects in materials and workmanship, excluding damage caused by matters beyond Sloan's reasonable control. Instructions for filing claims can be found in the Limited Warranty which can be obtained at [www.Sloan.com](http://www.Sloan.com) or by requesting a free copy by telephone at 888.756.2614. Sloan will repair or replace your defective product, or provide a refund, as your exclusive remedy. This is only a general summary of Sloan's Limited Warranty so it is important to note that the specific terms, conditions, limitations and exclusions, including the duration of warranty coverage for your particular Sloan product, are contained in the actual Sloan Limited Warranty. The Limited Warranty is subject to applicable laws in your country, state, province or other jurisdiction—and disputes arising under the Limited Warranty are to be resolved by binding arbitration unless you provide Sloan with an opt-out notice no later than 30 days after your purchase date. In case of a conflict with this summary, the terms and conditions set forth in the complete Limited Warranty will prevail.

**SLOAN • 10500 SEYMOUR AVENUE • FRANKLIN PARK, IL 60131**

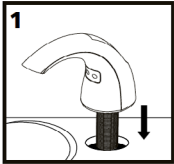
Phone: 1-800-9-VALVE-9 or 1-847-671-4300 • Fax: 1-800-447-8329 or 1-847-671-4380 • [www.sloan.com](http://www.sloan.com)

# Soap Dispenser Installation

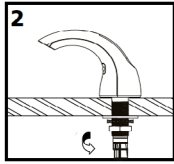
**NOTE: ESD-2100 Shown, instructions applicable for all Sloan soap dispensers**

## Installing the Touchfree Counter Mounted System

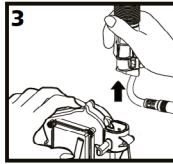
Prior to beginning installation, study the exploded view of the Touchfree Counter-Mounted System and locate all the pieces. Also, look beneath the countertop to and a suitable place for mounting of the Battery Box so that it will not interfere with system components or plumbing.



Feed the cable and the shank of the Dispenser Assembly through the hole in the countertop. Point the spout of the Dispenser into the sink bowl.

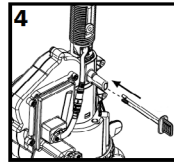


From underneath counter, feed retaining washer and nut over spout cable onto threaded shank of spout. Tighten the nut securely.



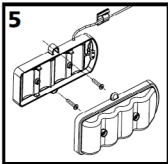
Align the indent inside the top of the Motor Assembly/Bottle Support with the indent on the shank of the Dispenser Assembly and firmly push the Motor Assembly/Bottle Support up, onto the shank.

**NOTE:** Hold the Cable firmly out of the way as you push up on the Motor Assembly/Bottle Support. Continue pushing upward until the vertical slots in the Dispenser shank and the Motor Assembly/Bottle Support line up.

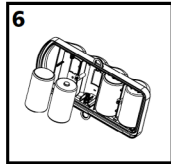


Secure the Motor Assembly/Bottle Support to the Dispenser shank by pushing the Retaining Clip into place through the vertical slots, until it goes all the way through the Motor Assembly.

**NOTE:** Motor Assembly/Bottle Support will rotate 360° to avoid any obstruction.

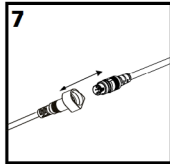


Remove the cover from the Battery Box by loosening the two captive screws on the Battery Box cover. Position the Box on a convenient (vertical or horizontal) surface under the counter top that will allow access for battery changing. Attach the Box to the surface using the two screws and anchors (if attaching to a plaster or masonry surface). Use the Wall Clip to secure the Power Cable to a wall or other under-counter surface if desired.



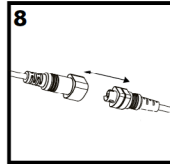
Place four alkaline "D" Cell batteries into the Battery Box cover. The batteries must be positioned according to the diagrams shown on the inside of the cover.

**NOTE:** If the batteries are not properly installed or the cover is not properly positioned on the Box, the System will not work. Position the cover (with batteries installed) on the Battery Box and tighten the two captive screws.



**IMPORTANT:** Connect the two halves of the Cable and by visually lining up the white stripes on each half and gently pushing the cable connectors together until the stripes touch.

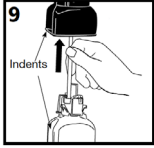
**Improperly assembled connectors can cause unit to not function as intended.**



After the batteries are installed in the battery box, connect the two halves of the power cable and allow 20 seconds before the system is ready to dispense soap.

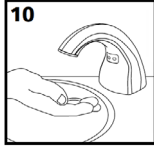
# Soap Refill Bottle Installation and Removal

## Refill Installation (refill separately)



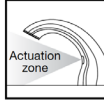
Feed the dispense tube on the Refill Bottle up through the Motor Assembly/Bottle Support and Dispenser Assembly, aligning the two indents in the Bottle and the Support. Slide the Bottle upward until it snaps into place.

**NOTE:** The refill is not properly installed until you hear the "snap" (as the Green release latch on the Motor Assembly/Bottle Support engages).

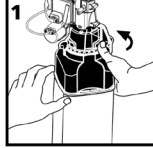


Test the System by placing your hand under the spout of the Dispenser

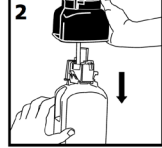
Assembly (in front of the sensor window) at least three or four times, until foam soap appears. If the System does not dispense soap after placing your hand in front of the sensor several times, repeat several more times. If no sound heard from motor assembly after placing hands in front of sensor, check to see that the Cable halves are firmly connected, that the batteries are "good", and that the Battery Box cover is properly positioned and fastened to the Box. Check for bent contact pins inside connector. If unit is multi-activating, check for bent contact pins inside connector.



## Refill Removal



Grasp the empty Refill Bottle with one hand and use the other hand to push the Green release latch on the Motor Assembly/Bottle Support to the right (counterclockwise as seen from above).



Grasp the empty Refill Bottle with one hand and use the other hand to push the Green release latch on the Motor Assembly/Bottle Support to the right (counterclockwise as seen from above).

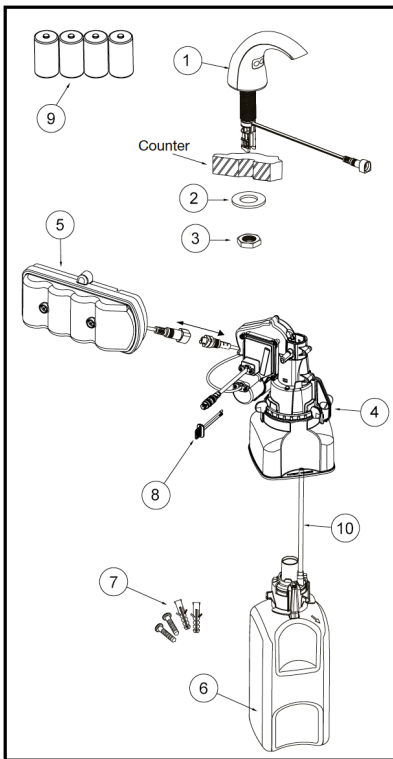
---

### Cleaning the Counter Mounted System

Use only mild soap and water to clean the TouchFree Counter Mounted System spout. Cover the sensor window with your thumb while cleaning the spout so that you do not continue to dispense soap.

**DO NOT** use abrasives to clean the TouchFree Counter-Mounted System (as this may damage the finish or the sensor window).

## Parts Breakdown



ITEM	DESCRIPTION	QTY.
1	DISPENSER ASSEMBLY (SEE SPOUT LIST BELOW)	1
2	FLAT WASHER	1
3	SPOUT MOUNTING NUT	1
4	MOTOR ASSEMBLY (BOTTLE SUPPORT)	1
5	BATTERY BOX (USES 4 "D" CELL BATTERIES)	1
6	SOAP BOTTLE (2 BOTTLES SHIP WITH DISPENSER/ADDITIONAL SOLD SEPARATELY)	1 BOX (2 BOTTLES)
7	SCREWS & ANCHORS FOR BATTERY BOX MOUNTING	1
8	RETAINER CLIP	1
9	"D" CELL BATTERIES (PROVIDED)	4
10	SOAP BOTTLE TUBE	1
11 NOT SHOWN	ESD324 - 6 VDC PLUG-IN ADAPTER KIT (100-240 VAC), FOR 1 OR 2 DISPENSERS / SOLD SEPARATELY	1

### REPLACEMENT SPOUTS ONLY (INCLUDES NUT & WASHER)

ITEM	DESCRIPTION	QTY.
1	ESD-1502A CP SPOUT ASSEMBLY-EAF100/150 STYLE	1
1	ESD-2002A CP SPOUT ASSEMBLY-EAF200/250/275 STYLE	1
1	ESD-2102A CP SPOUT ASSEMBLY-SF-2100/2150 STYLE	1
1	ESD502A CP SPOUT ASSEMBLY BASYS STYLE	1
	ESD412A CP SPOUT ASSEMBLY 410 STYLE	1
	ESD422A CP SPOUT ASSEMBLY 420 STYLE	1
1	ESD-602A CP SPOUT ASSEMBLY ETF-600/650 STYLE (610/615)	1
1	ESD702A CP SPOUT ASSEMBLY EAF-700/750 STYLE	1
1	EAF802A CP SPOUT ASSEMBLY ETF80/EBF-85	1

### REPAIR PARTS

(IN KIT FORM- TAKEN FROM ITEM NUMBERS ABOVE)

ITEM	REPAIR PARTS AVAILABLE TO ORDER	DESCRIPTION	MATERIAL NUMBER
2 & 3	ESD218	SPOUT MOUNTING HARDWARE (INCLUDED WITH SPOUT) *ALTERNATE MOUNTING FLANGE NUT	*0346002
4 & 5	ESD320A	SOAP DISPENSING MOTOR (INCLUDES BATTERY BOX #8)	0346081
6	ESD325	GREEN CERTIFIED FOAM SOAP REFILLS 1500 ML (4 PER BOX)	03460004
	ESD324	6 VDC PLUG-IN ADAPTER KIT (100-240 VAC), FOR 1 OR 2 DISPENSERS	0346090
10	ESD340A	STRAW ASM FOR SOAP BOTTLE	0346102

**SLOAN • 10500 SEYMOUR AVENUE • FRANKLIN PARK, IL 60131**

Phone: 1-800-9-VALVE-9 or 1-847-671-4300 • Fax: 1-800-447-8329 or 1-847-671-4380 • [www.sloan.com](http://www.sloan.com)