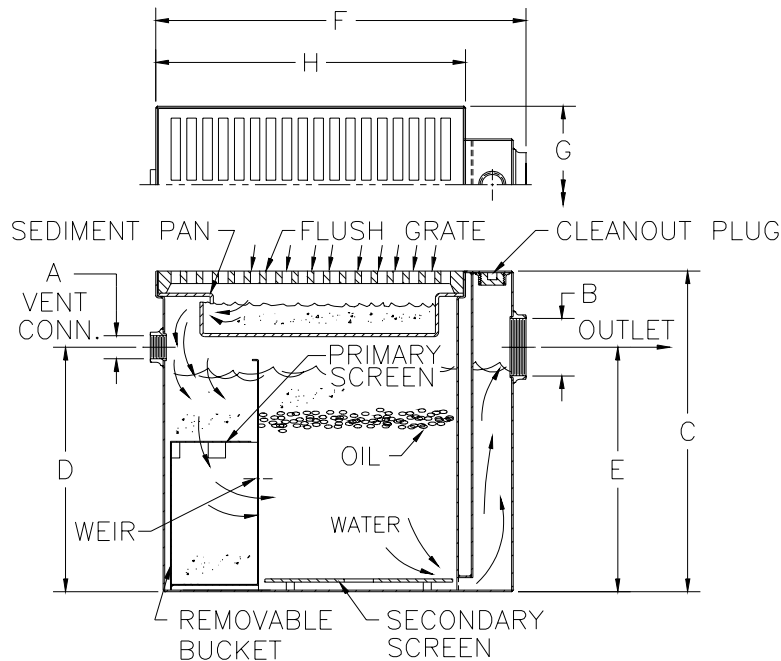




Z-1189 OIL & SEDIMENT INTERCEPTOR

Operation and Maintenance Instructions



Size	Sludge Capacity Lbs. [kg]	Grate Open Area [cm ²]	No. of Grates	No. of Pans	Approx. Wt. Lbs. [kg]	A Vent Size	B Pipe Size	Dimension In Inches					
								C	D	E	F	G	H
12	12 [5]	49 [316]	1	1	70 [32]	----	2 [50]	15 [381]	----	10 1/2 [267]	17 1/8 [435]	11 3/8 [289]	12 3/8 [314]
60	60 [27]	131 [845]	1	1	175 [79]	2 [51]	4 [75]	25 1/4 [641]	19 1/4 [489]	17 5/8 [448]	29 1/8 [740]	12 3/8 [314]	24 3/8 [619]
100	100 [45]	262 [1690]	2	1	280 [127]	2 [51]	4 [75]	33 [838]	27 [686]	22 [559]	29 1/8 [740]	24 3/8 [619]	24 3/8 [619]
200	200 [91]	393 [2535]	3	1	370 [168]	2 [51]	4 [75]	33 [838]	27 [686]	22 [559]	41 1/8 [1044]	24 3/8 [619]	36 3/8 [924]
300	300 [136]	524 [3380]	4	1	460 [208]	2 [51]	4 [75]	33 [838]	27 [686]	22 [559]	53 1/8 [1349]	24 3/8 [619]	48 3/8 [1229]

SIZING

The sizing of this interceptor is generally based upon the expected amount of sediment and solid waste to be retained. (See chart above for sludge capacity). Secondly, sizing will determine the frequency for which cleaning shall be required. Larger units will handle greater volumes of waste between cleanings. All units are made with a standard pipe size outlet and are capable of handling drainage volumes standard to their respective pipe size.

DESIGN

The Zurn Z-1189 Oil and Sediment Interceptor for garage and industrial floor drainage applications is designed to retain mud, sand, sediment, greasy sludge or any other solids entering a floor drain, in addition to any oil/grease laden waste material. This is accomplished through the principal of gravity and floatation separation. The sediment pan retains greasy sludge and solids. The removable bucket/weir will also retain solids and act to stop water turbulence so oil and grease can separate from the water, and be retained in the main separation chamber.

OPERATION

The waste water flows through the grate into the sediment pan, then down into the removable bucket, exiting through the weir at back of the bucket into the main separating chamber, down through the secondary screen, into the cleanout chamber, then exits the interceptor to the sanitary drain system.

MAINTENANCE

Cleaning should be done on a regular basis, either before or after sediment pan passageway becomes blocked. Remove the grate, sediment pan and bucket, and clean out all debris. Skim oil/grease from top of water or pump contents out. After cleaning all materials should be disposed of properly. Efficiency of operation is directly related to the level of maintenance. Cleaning should be done regularly to avoid oil/sludge from passing through the unit.