

Central Brass Company, Inc.
3325 S. Garfield Ave.
Commerce, CA 90040
(800) 321-8630
www.centralbrass.com

Tools:



Model Number: 0355, 0356 Series

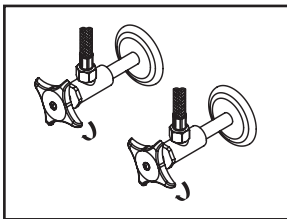


Warnings and Notes:

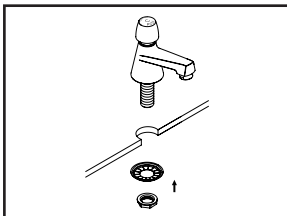
Check with local plumbing code requirements before installation.
This product should be installed by a local listed plumber.
Do not use plumbers putty on threads.

Installation Steps:

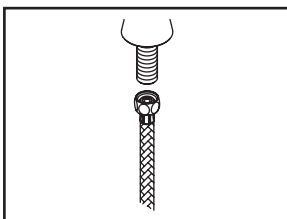
Slow-Close Single Handle Basin Faucet



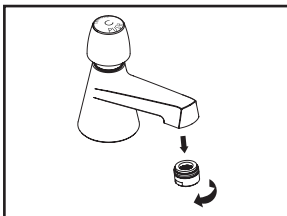
(1) Shut off water supplies. Remove old faucet. Clean mounting surface in preparation for new faucet.



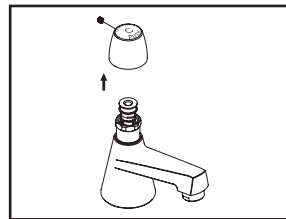
(2) Apply plumbers putty under the faucet. Place the faucet in position on the sink. Slide steel washer through shanks and tighten with locknut from underneath the sink.



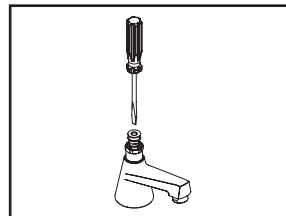
(3) When using stainless steel braided faucet supply hose; this faucet requires one end of the supply hose to have a 1/2" female IPS connection. The other end of this supply hose must match the thread on the water supply valve under your sink. Once you've identified the required size, carefully follow the manufacturer's installation instructions for each hose.



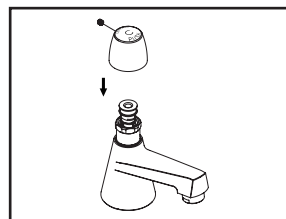
(4) Important: After installation is complete, remove aerator. Turn water supplies on and allow water to run at least one minute. While water is running, check for leaks. Turn off water and replace aerator.



(5) The slow close cartridge is factory preset timing to 10 seconds@60 PSI. Depending on the inlet water pressure and water temperature might vary this timing. If timing need to be changed, remove the handle by loosening Allen screw.



(6) With the help of flat head screwdriver, loosen the screw to decrease the timing and tighten the screw to increase the timing. The timing can be adjusted from 0 to 60 seconds depending on the inlet pressure and water temperature.



(7) Once the satisfactory timing has been adjusted, install the handle by tightening Allen screw.