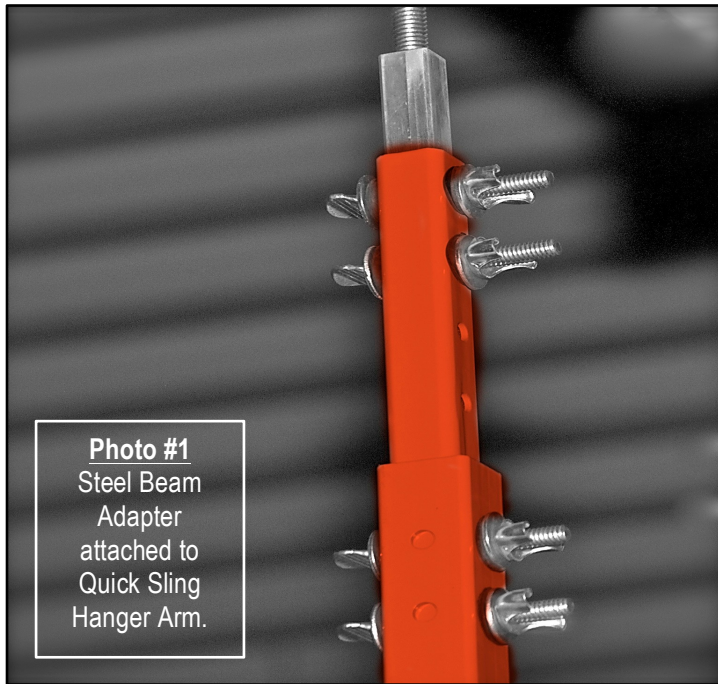


## Quick Sling Steel Adapter Installation: *(Please adhere to all local laws and building codes)* Model#: **(QSAC1000)**



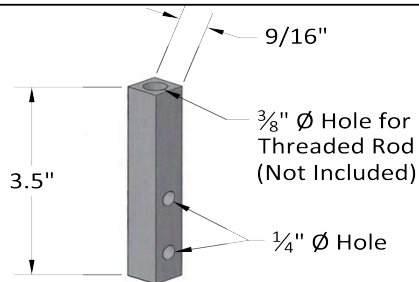
**Step #1:** Remove Steel Adapters from the box (*Pink Labeled Bag*).

**Step #2:** Insert one steel adapter into the end of the  $\frac{3}{4}$ " Hanger Arm and line up the holes (see drawing below). Then insert one 2" Thumb Screw with a rubber grommet and flat steel washer on each side (*Orange Labeled Bag*).

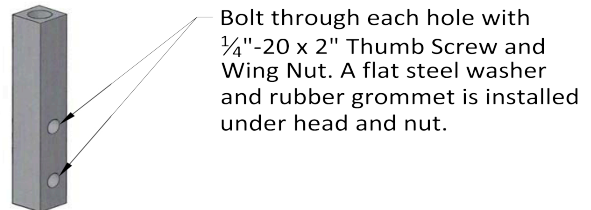
**Step #3:** Repeat Step #2 four times, using all hardware provided.

**Step #4:** You are now ready to attach your desired length of  $\frac{3}{8}$ " threaded rod and C-Clamp (not provided) into the top of the Steel Beam Adapter.

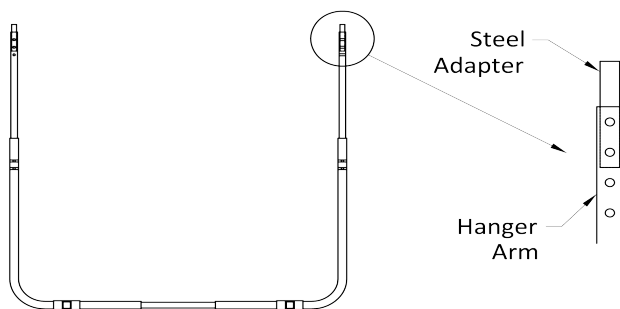
**Step #5:** Attach whole unit to Steel Beam or Purlins.



Dimensions



Hardware



Installed in Quick Sling

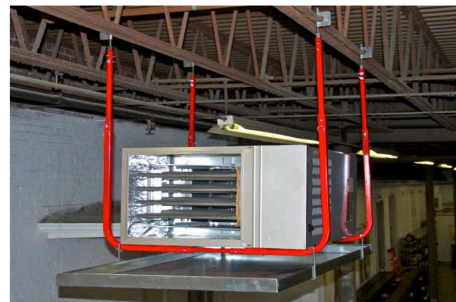


Photo of Installation

## **Safe Install Warning**

### **Install At Your Own Risk!**

The load capacity of this product can only be assured if installation is carried out properly.

Mounting hardware is included with most models. However, it is the Buyer's sole responsibility to determine that the enclosed hardware is safe and suitable for the selected mounting location. Additional materials and safety precautions may be required, depending upon the size and location of the installation. When hardware is not included, the Buyer is solely responsible for furnishing and installing anchors and related mounting materials that are safe and suitable for the selected mounting location. Quick-Sling™ is not responsible for any installation faults or defects. It is highly recommended that the installation/mounting location be periodically inspected by a skilled technician. Make sure that the installation location is suitable enough to hold the brackets and associated equipment loads.

## **Disclaimer Of Liability**

Quick-Sling LLC and its successors, distributors, jobbers, dealers and retailers ("Seller") shall in no way be responsible for any direct, indirect or consequential damage resulting from improper installation, misuse or misapplication of this product. It is the BUYER's sole responsibility for assuring proper installation and use.

**Seller makes no warranty of merchantability of the goods or the fitness of the goods for any particular purpose. Seller makes no warranties of any kind, express or implied. The goods are sold as-is and with all faults.**