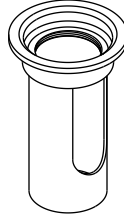


INSTALLATION INSTRUCTIONS



P21639

INSTALLATION INSTRUCTIONS

THANK YOU FOR CHOOSING KALLISTA

We appreciate your commitment to Kallista quality products. Please take a moment to review this manual before you install your Kallista product. If you encounter any installation or performance problems, please do not hesitate to contact us at the phone number listed at the bottom of the page.

BEFORE YOU BEGIN

- Observe all local plumbing and building codes.
- Shut off the main water supply.
- The basin and drain shown in this guide may differ from your actual product. The installation steps still apply.
- Kallista reserves the right to make revisions in the design of products without notice, as specified in the Price Book.

TOOLS AND MATERIALS



INSTALL THE DRAIN AND SHROUD

- Remove the cover, stopper and flange from the drain body.
- Install the decorative nut onto the drain body, and thread to the bottom of the threads.
- Install the nut and washer onto the drain body.
- Apply plumbers putty to the underside of the flange.
- Assemble the drain onto the basin, completing the drain installation according to the drain manufacturer's instructions.
- Slide the shroud over the drain tailpiece and into the bottom of the decorative nut. Ensure that the O-ring in the decorative nut is engaged in the groove in the shroud.
- Orient the slot in the shroud toward the wall.

