



# SYMMONS® Winslet™

## Two Handle Widespread Lavatory Faucet

### SLW-5112

## Installation Brief



### Model Number

SLW-5112 Two Handle Widespread lavatory faucet with pop-up drain



Applies to models manufactured after Q1 2013, p/n LN-02058 identified on faucet rear base

### Decorative Finishes

Append finish suffix code to replacement part numbers when applicable

- STN Satin nickel
- ORB Oil rubbed bronze

### Tools & Materials



### Care and Cleaning

Clean finished area using mild soap or a non-abrasive cleaner and then quickly rinse with water. A non-abrasive wax may be used to preserve finish area.

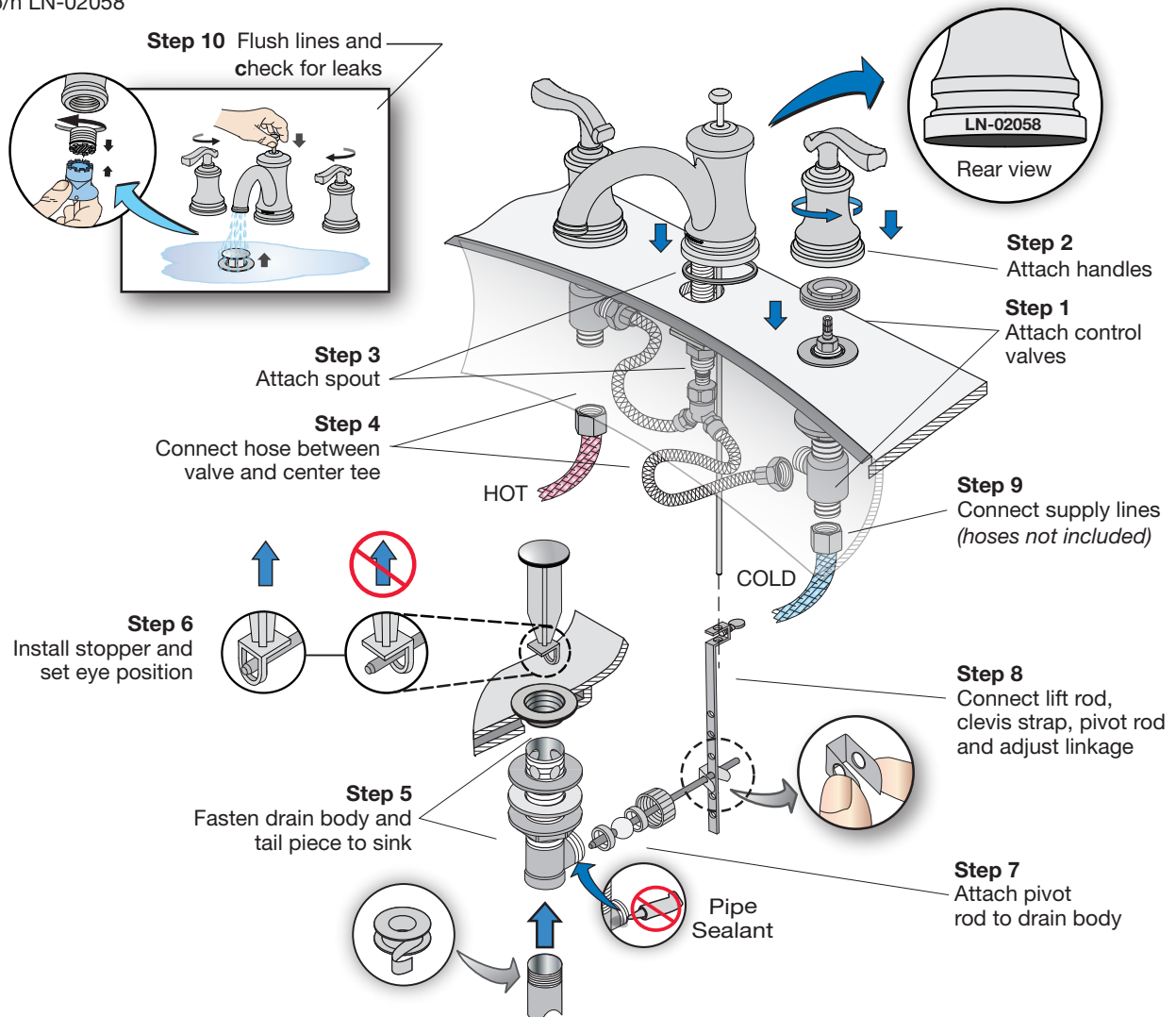
### Need Help?

Contact Symmons customer service at (800) 796-6667, (781) 848-2250  
Email: [customerservice@symmons.com](mailto:customerservice@symmons.com)  
Monday - Friday 7:30 am - 7:00 pm EST

Please check Symmons website for technical help, the latest product information and warranty policy.  
[www.symmons.com/service](http://www.symmons.com/service)

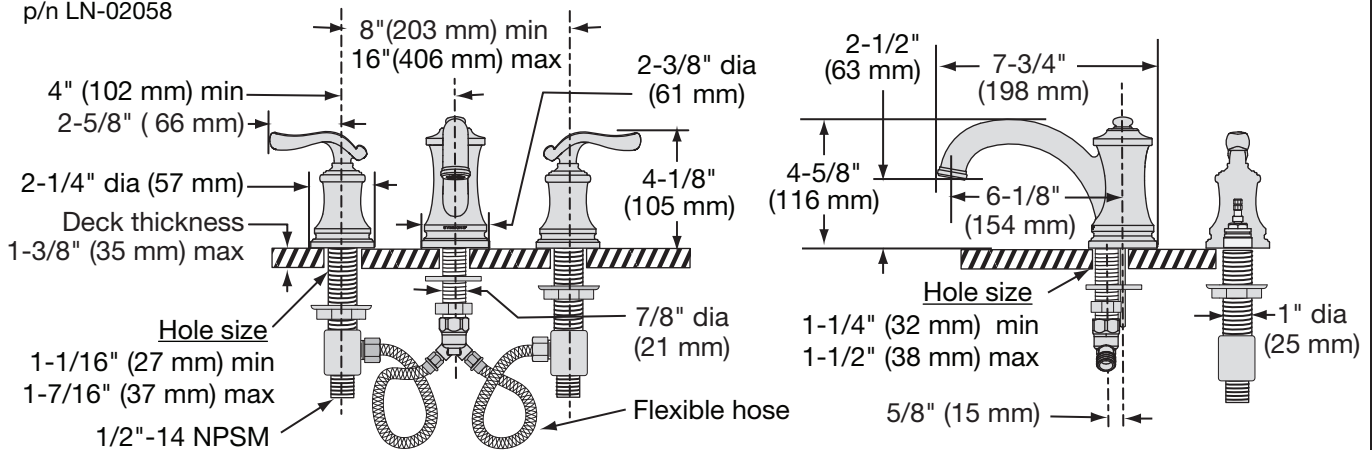
## Quick Install Guide Winslet Two Handle Widespread Lavatory Faucet, SLW-5112

p/n LN-02058



# Dimensions Winslet Two Handle Widespread Lavatory Faucet, SLW-5112

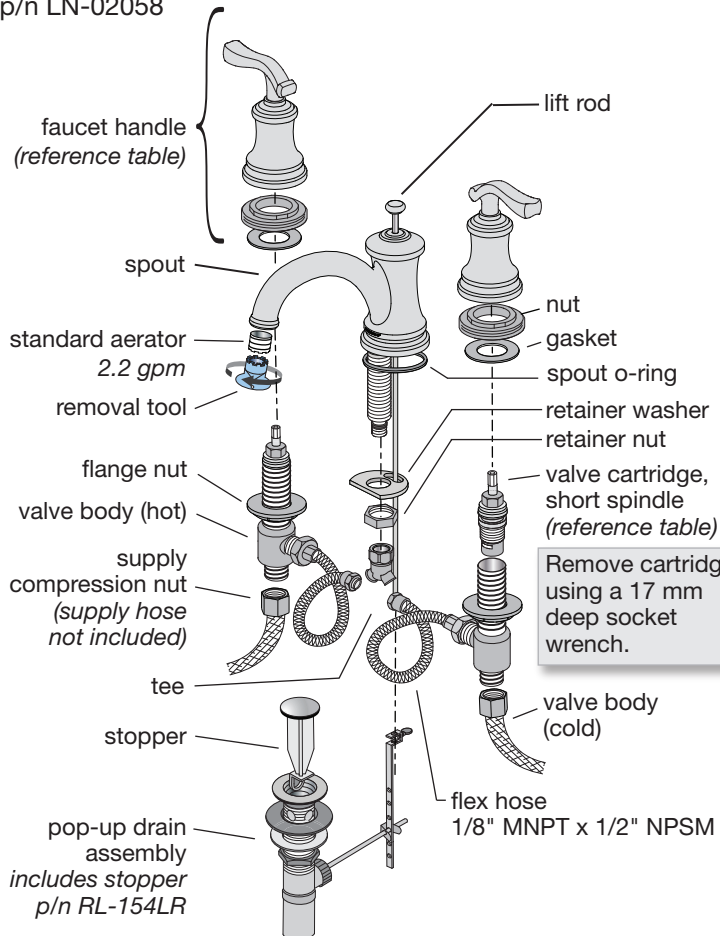
p/n LN-02058



**Note:** Dimensions subject to change without notice.

# Parts Assembly Winslet Two Handle Widespread Lavatory Faucet, SLW-5112

p/n LN-02058




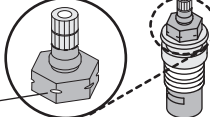





\* Note: When ordering parts for products with an optional decorative finish, append appropriate three letter finish suffix code to part numbers marked with an asterisk (\*).



Replacement part numbers apply only to faucets manufactured after Q1 2013, p/n LN-02058 identified on faucet rear base. Reference page 1, Quick Install Illustration

## Replacement Parts

Part Number	Item
RL-138* (includes both hot & cold handles)	handle assembly  nut  gasket 
KN-114 (hot) OFF = CW KN-113 (cold) OFF = CCW	valve cartridge  KN-113 identified by groove
LN-333-KIT FLR-102-1.5-KIT LN-742-KIT	Kits include aerator and aerator removal tool  flow rates 2.2 gpm (8.3 L/min) 1.5 gpm (5.7 L/min) 1.0 gpm (3.8 L/min)
RL-131	1/2 inch supply compression nuts (2) included 
RL-132*	Lift rod 

### Ordering replacement parts:

Call Symmons customer service at (800) 796-6667, (781) 848-2250 M-F 7:30 am - 7:00 pm EST or check our website at [www.symmons.com](http://www.symmons.com) for a list of Symmons distributors.